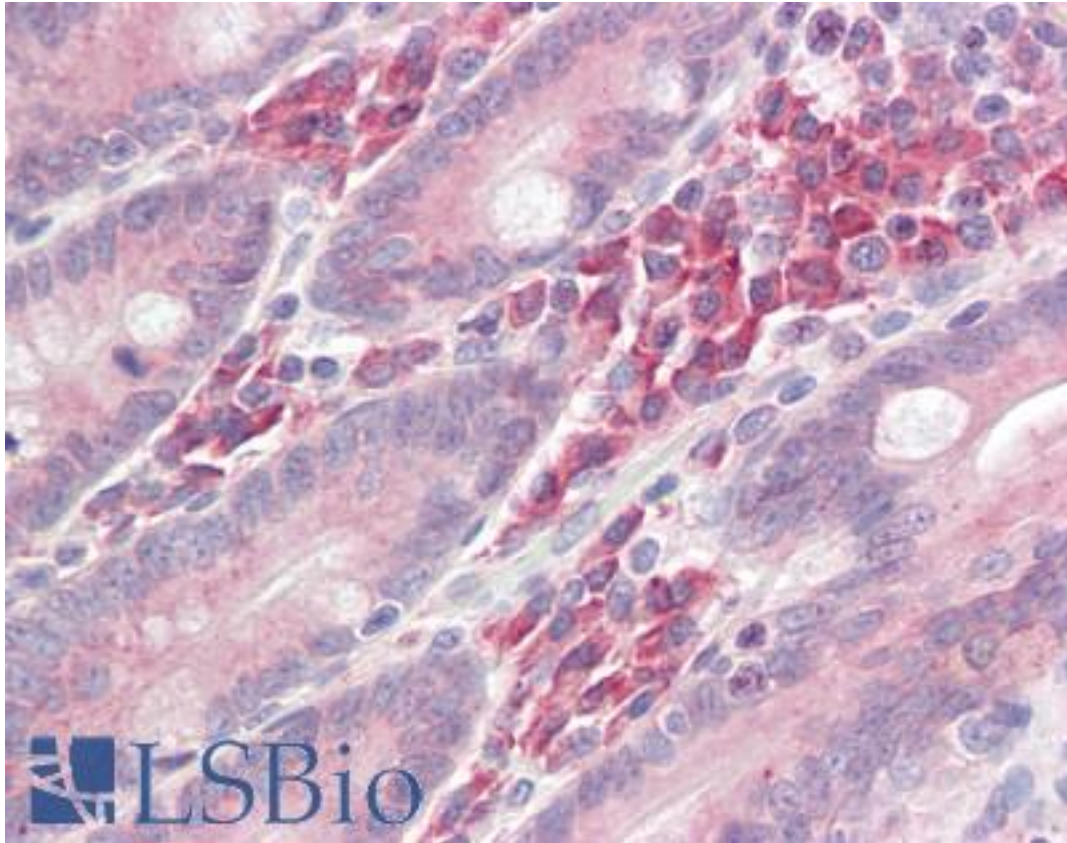


LAT1 / LAT Rabbit anti-Human Polyclonal (aa70-120) Antibody - LS-B8007 - LSBio

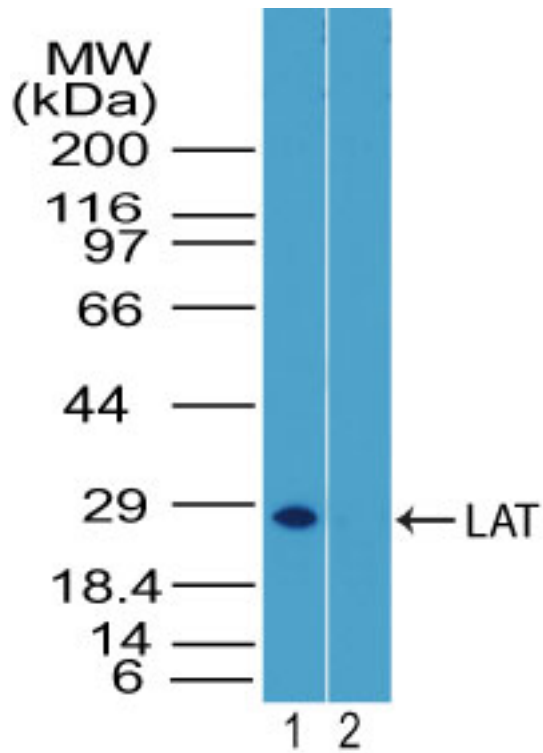
CatalogID:	LS-B8007
Validation:	This antibody replaces catalog number LS-C148794. It has been validated for use in the following assays: IHC-P.
Target:	linker for activation of T cells (LAT)
Synonyms:	LAT Antibody, p36-38 Antibody, Pp36 Antibody, LAT1 Antibody
Host	LAT antibody was produced in Rabbit
Clonality:	Polyclonal
Immunogen Species:	LAT1 / LAT antibody was raised against Human
Antigen Type:	Synthetic peptide
Immunogen:	LAT1 / LAT antibody was raised against amino acids 70-120 of human LAT.
Specificity:	Human LAT
Epitope:	aa70-120
Reactivity:	Human, Chimpanzee, Monkey, Mouse
Purification:	Protein A purified
Presentation:	PBS, 0.05% BSA, 0.05% sodium azide
Recommended Storage:	Store at 4°C for short term applications. For long term storage, aliquot and store at -20°C.
Uses:	IHC - Paraffin (10 µg/ml), Western blot (1 - 3 µg/ml) (Optimal dilution to be determined by the researcher)
Size:	50 µg
Concentration:	0.5 mg/ml

Immunohistochemistry Image:



Anti-LAT1 / LAT antibody IHC of human small intestine. Immunohistochemistry of formalin-fixed, paraffin-embedded tissue after heat-induced antigen retrieval. Antibody LS-B8007 dilution 10 ug/ml.

Western Blot Image:



Western blot of LAT in mouse thymus tissue lysate in the 1) absence and 2) presence of immunizing peptide using LS-B8007 at 2 ug/ml. Goat anti-rabbit Ig HRP secondary antibody, and PicoTect ECL substrate solution were used for this test.

Requested From:

Japan

Laboratory Reagent For In Vitro Research Use Only

Not for resale without prior written consent from LifeSpan BioSciences, Inc.

Created on 9/24/2014

© 2014 LifeSpan BioSciences