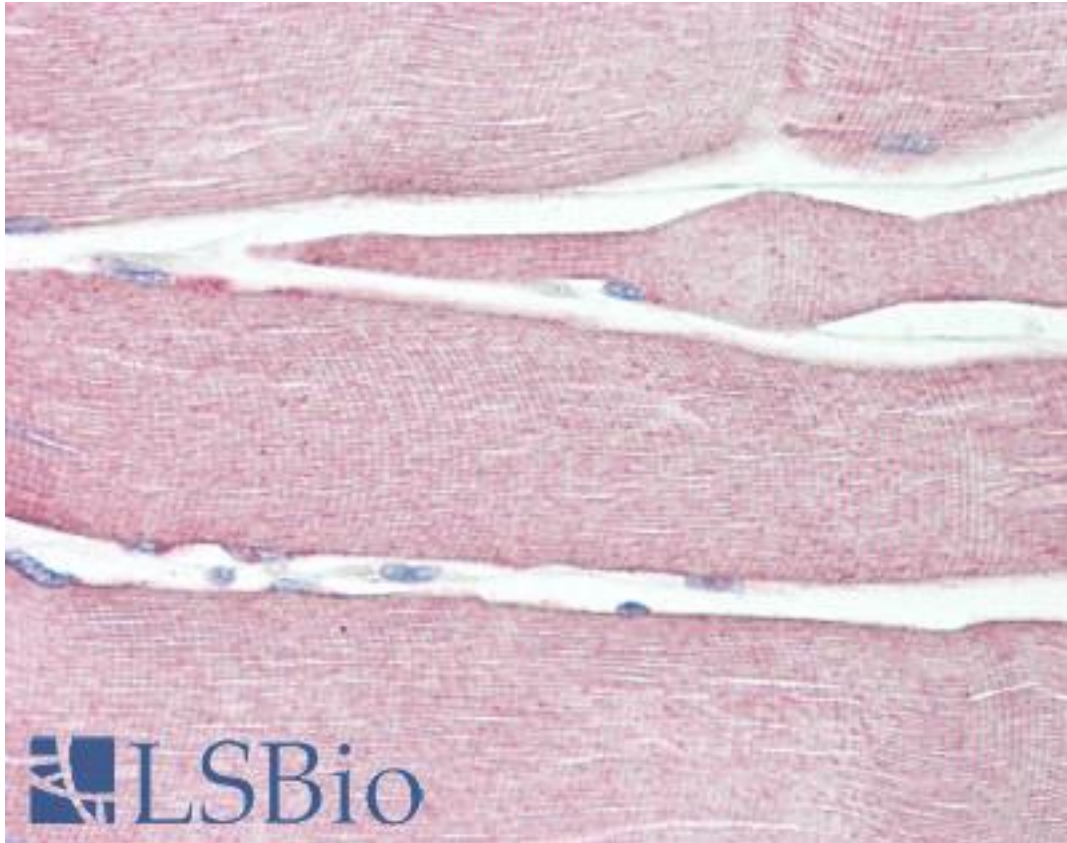


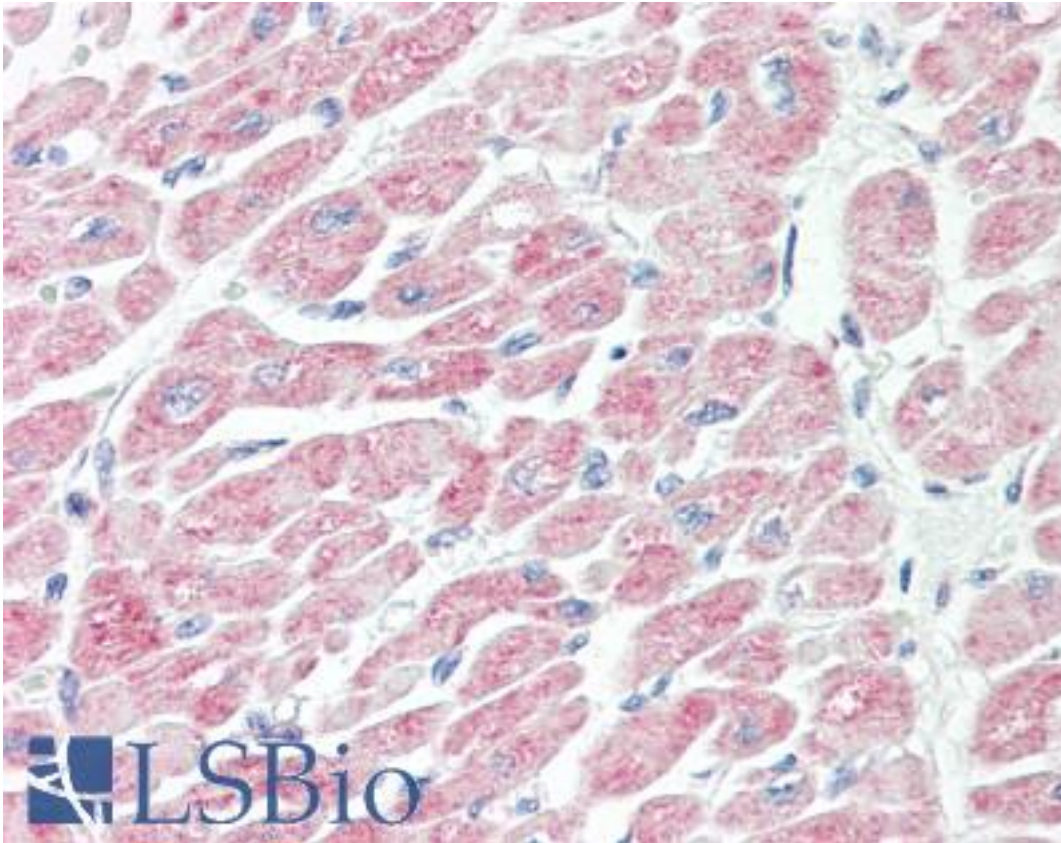
NLRX1 Rabbit anti-Human Polyclonal (aa580-630) Antibody - LS-B8005 - LSBio	
CatalogID:	LS-B8005
Validation:	This antibody replaces catalog number LS-C148780. It has been validated for use in the following assays: IHC-P.
Target:	NLR family member X1 (NLRX1)
Synonyms:	NLRX1 Antibody, CLR11.3 Antibody, Caterpillar protein 11.3 Antibody, DLNB26 Antibody, NLR family member X1 Antibody, NLR family, X1 Antibody, NOD9 Antibody, NOD5 Antibody, NOD-like receptor X1 Antibody, NOD26 Antibody
Host	NLRX1 antibody was produced in Rabbit
Clonality:	Polyclonal
Immunogen Species:	NLRX1 antibody was raised against Human
Antigen Type:	Synthetic peptide
Immunogen:	NLRX1 antibody was raised against amino acids 580-630 of human NLRX1.
Specificity:	Human NLRX1
Epitope:	aa580-630
Reactivity:	Human, Monkey, Mouse, Rat, Horse
Purification:	Protein A purified
Presentation:	PBS, 0.05% BSA, 0.05% sodium azide
Recommended Storage:	Store at 4°C for short term applications. For long term storage, aliquot and store at -20°C.
Uses:	IHC - Paraffin (5 - 10 µg/ml), Western blot (5 - 7 µg/ml) (Optimal dilution to be determined by the researcher)
Size:	50 µg
Concentration:	0.5 mg/ml

Immunohistochemistry Image:



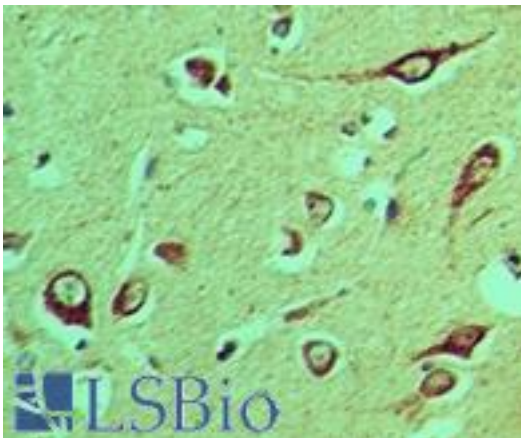
Anti-NLRX1 antibody IHC of human skeletal muscle. Immunohistochemistry of formalin-fixed, paraffin-embedded tissue after heat-induced antigen retrieval. Antibody LS-B8005 dilution 5-10 ug/ml.

Immunohistochemistry Image:



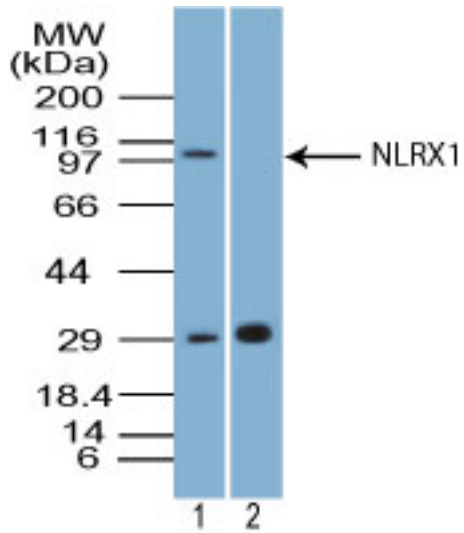
Anti-NLRX1 antibody IHC of human heart. Immunohistochemistry of formalin-fixed, paraffin-embedded tissue after heat-induced antigen retrieval. Antibody LS-B8005 concentration 10 ug/ml.

Immunohistochemistry Image:



Anti-NLRX1 antibody IHC of human brain. Immunohistochemistry of formalin-fixed, paraffin-embedded tissue after heat-induced antigen retrieval. Antibody LS-B8005 concentration 10 ug/ml.

Western Blot Image:



Western blot of NLRX1 in mouse heart tissue lysate in the 1) absence and 2) presence of immunizing peptide using LS-B8005 at 5 ug/ml. Goat anti-rabbit Ig HRP secondary antibody, and PicoTect ECL substrate solution were used for this test.

Requested From:

Japan

Laboratory Reagent For In Vitro Research Use Only

Not for resale without prior written consent from LifeSpan BioSciences, Inc.

Created on 9/24/2014

© 2014 LifeSpan BioSciences