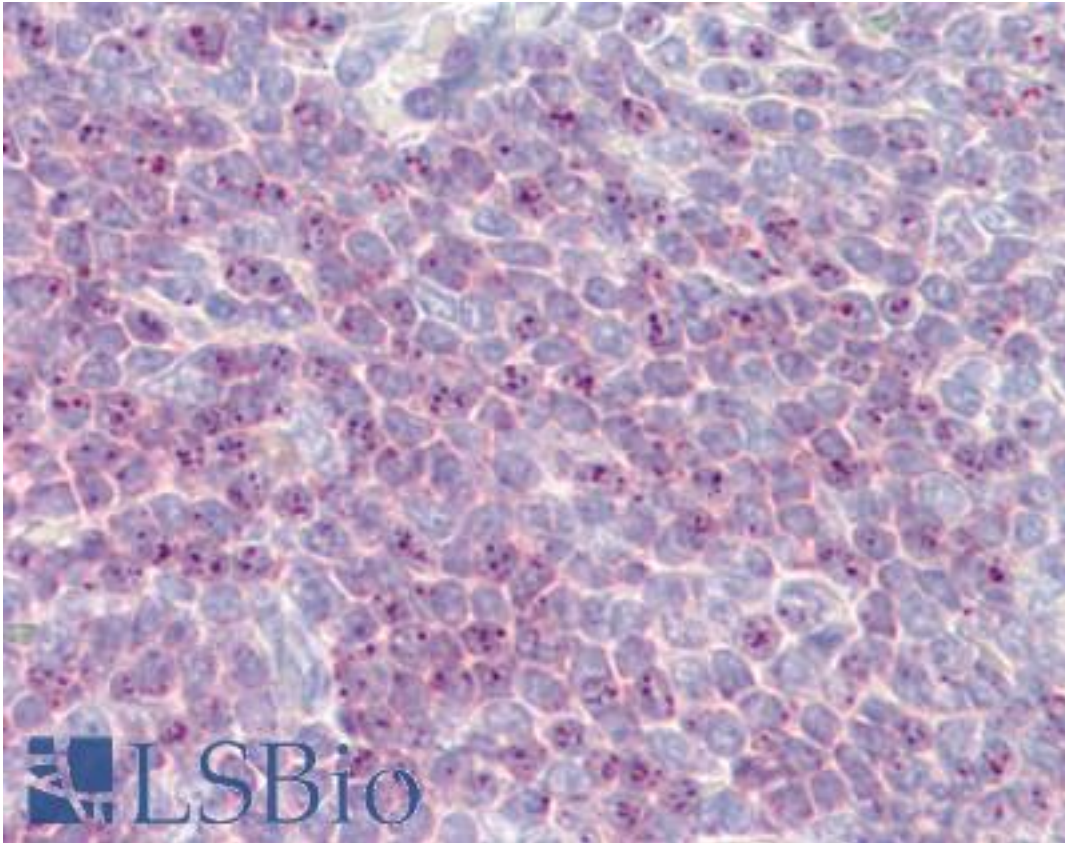


DLL1 Rabbit anti-Human Polyclonal (aa640-700) Antibody - LS-B8000 - LSBio	
CatalogID:	LS-B8000
Validation:	This antibody replaces catalog number LS-C148718. It has been validated for use in the following assays: IHC-P.
Target:	delta-like 1 (Drosophila) (DLL1)
Synonyms:	DLL1 Antibody, Delta-like 1 (Drosophila) Antibody, Delta (Drosophila)-like 1 Antibody, Drosophila Delta homolog 1 Antibody, Delta-like protein 1 Antibody, Delta1 Antibody, H-Delta-1 Antibody, DL1 Antibody, Npa Antibody
Host	DLL1 antibody was produced in Rabbit
Clonality:	Polyclonal
Immunogen Species:	DLL1 antibody was raised against Human
Antigen Type:	Synthetic peptide
Immunogen:	DLL1 antibody was raised against a portion of amino acids 640-700 of human DLL1 was used as the immunogen.
Specificity:	Human DLL1
Epitope:	aa640-700
Reactivity:	Human, Chimpanzee
Purification:	Protein A purified
Presentation:	PBS, 0.05% BSA, 0.05% sodium azide
Recommended Storage:	Store at 4°C for short term applications. For long term storage, aliquot and store at -20°C.
Uses:	IHC - Paraffin (5 - 10 µg/ml) (Optimal dilution to be determined by the researcher)
Size:	50 µg
Concentration:	0.5 mg/ml

Immunohistochemistry Image:



Anti-DLL1 antibody IHC of human spleen. Immunohistochemistry of formalin-fixed, paraffin-embedded tissue after heat-induced antigen retrieval. Antibody LS-B8000 dilution 5-10 ug/ml.

Requested From:

Japan

Laboratory Reagent For In Vitro Research Use Only

Not for resale without prior written consent from LifeSpan BioSciences, Inc.

Created on 9/24/2014

© 2014 LifeSpan BioSciences