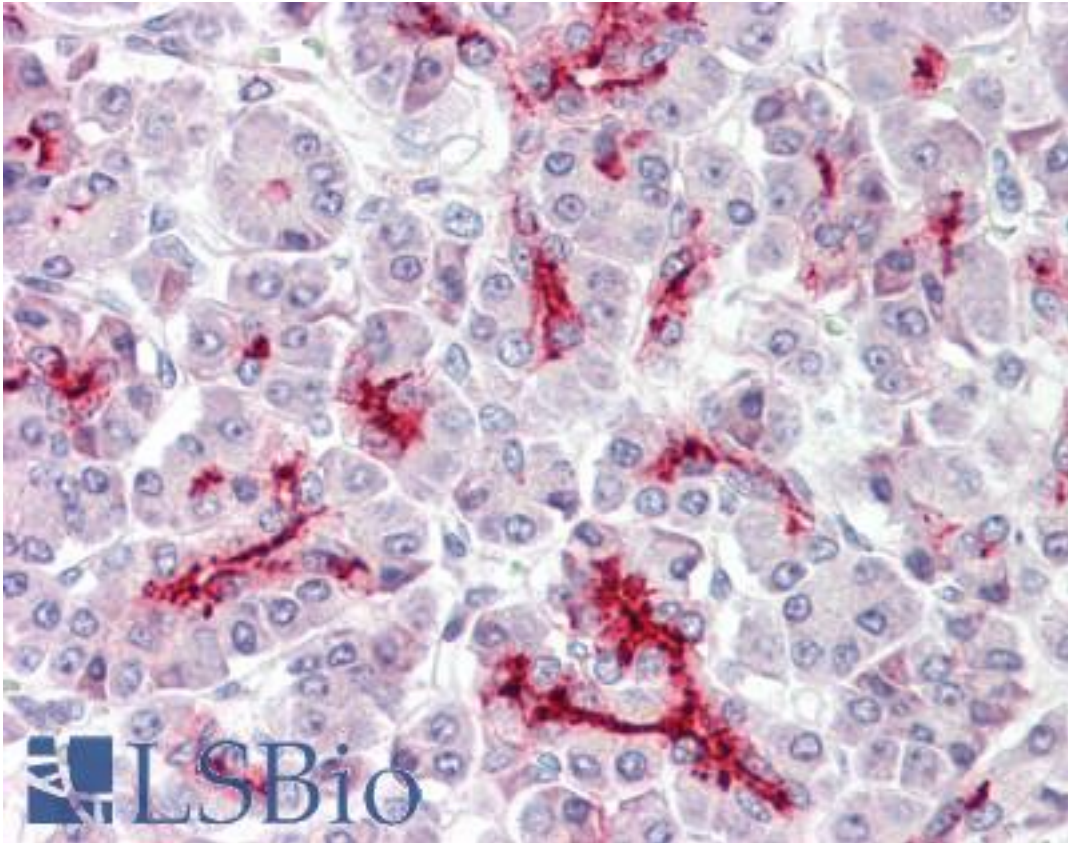


**CDX2 Rabbit anti-Human Polyclonal (aa1-60) Antibody - LS-B7990 - LSBio**

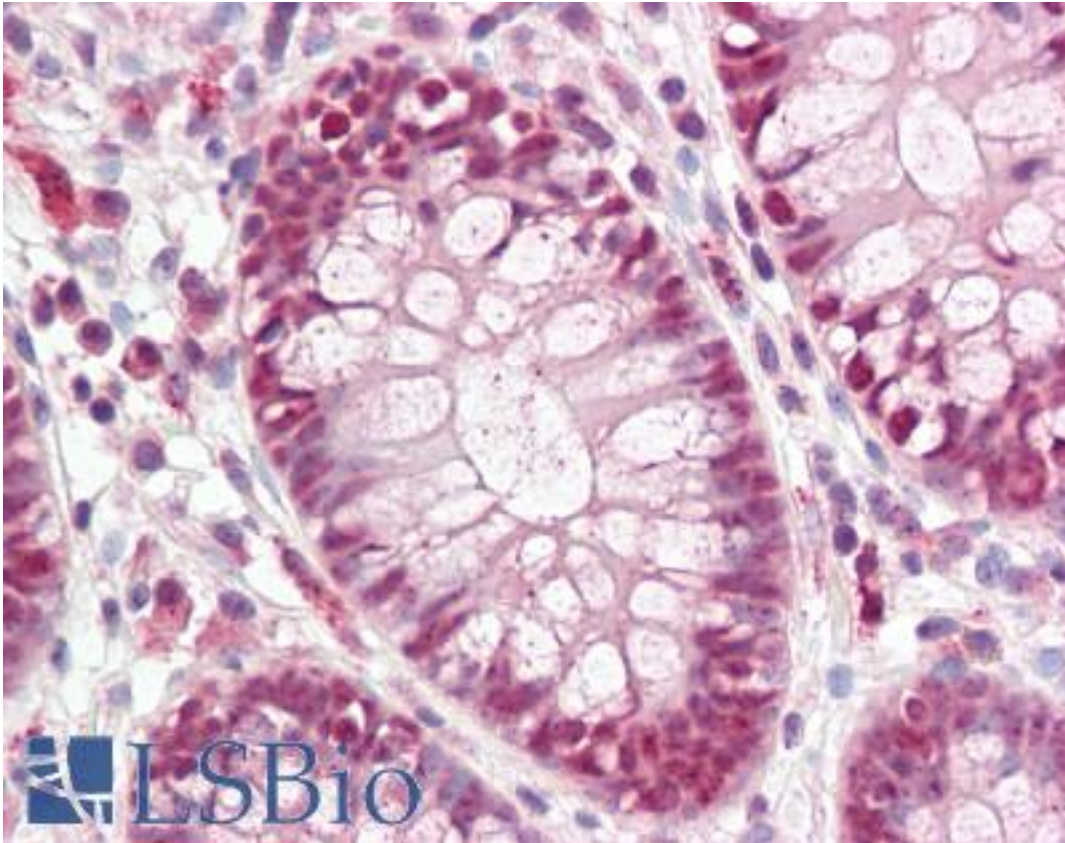
<b>CatalogID:</b>	LS-B7990
<b>Validation:</b>	This antibody replaces catalog number LS-C148636. It has been validated for use in the following assays: IHC-P.
<b>Target:</b>	caudal type homeobox 2 (CDX2)
<b>Synonyms:</b>	CDX2 Antibody, Caudal-type homeobox protein 2 Antibody, CDX3 Antibody, Homeobox protein CDX-2 Antibody, Caudal type homeobox 2 Antibody, CDX-3 Antibody
<b>Host</b>	CDX2 antibody was produced in Rabbit
<b>Clonality:</b>	Polyclonal
<b>Immunogen Species:</b>	CDX2 antibody was raised against Human
<b>Antigen Type:</b>	Synthetic peptide
<b>Immunogen:</b>	CDX2 antibody was raised against a portion of amino acids 1-60 of human CDX3/CDX2 was used as the immunogen.
<b>Specificity:</b>	Human CDX2
<b>Epitope:</b>	aa1-60
<b>Reactivity:</b>	Human, Monkey, Mouse, Rat, Bovine, Horse, Opossum
<b>Purification:</b>	Immunoaffinity purified
<b>Presentation:</b>	PBS, 0.05% BSA, 0.05% sodium azide
<b>Recommended Storage:</b>	Store at 4°C for short term applications. For long term storage, aliquot and store at -20°C.
<b>Uses:</b>	IHC - Paraffin (10 µg/ml), Western blot (1 - 3 µg/ml) (Optimal dilution to be determined by the researcher)
<b>Size:</b>	50 µg
<b>Concentration:</b>	0.5 mg/ml

**Immunohistochemistry Image:**



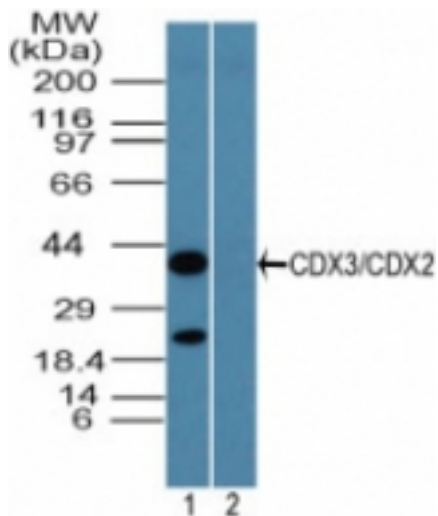
Anti-CDX2 antibody IHC of human pancreas. Immunohistochemistry of formalin-fixed, paraffin-embedded tissue after heat-induced antigen retrieval. Antibody LS-B7990 dilution 10 ug/ml.

**Immunohistochemistry Image:**



Anti-CDX2 antibody IHC of human colon. Immunohistochemistry of formalin-fixed, paraffin-embedded tissue after heat-induced antigen retrieval. Antibody LS-B7990 dilution 10 ug/ml.

**Western Blot Image:**



Western blot of CDX3/CDX2 in HCT-116 cell lysate in the 1) absence and 2) presence of immunizing peptide using LS-B7990 at 2 ug/ml. Goat anti-rabbit Ig HRP secondary antibody, and PicoTect ECL substrate solution, were used for this test.

**Requested From:**

Japan

Laboratory Reagent For In Vitro Research Use Only

Not for resale without prior written consent from LifeSpan BioSciences, Inc.

Created on 9/24/2014

© 2014 LifeSpan BioSciences