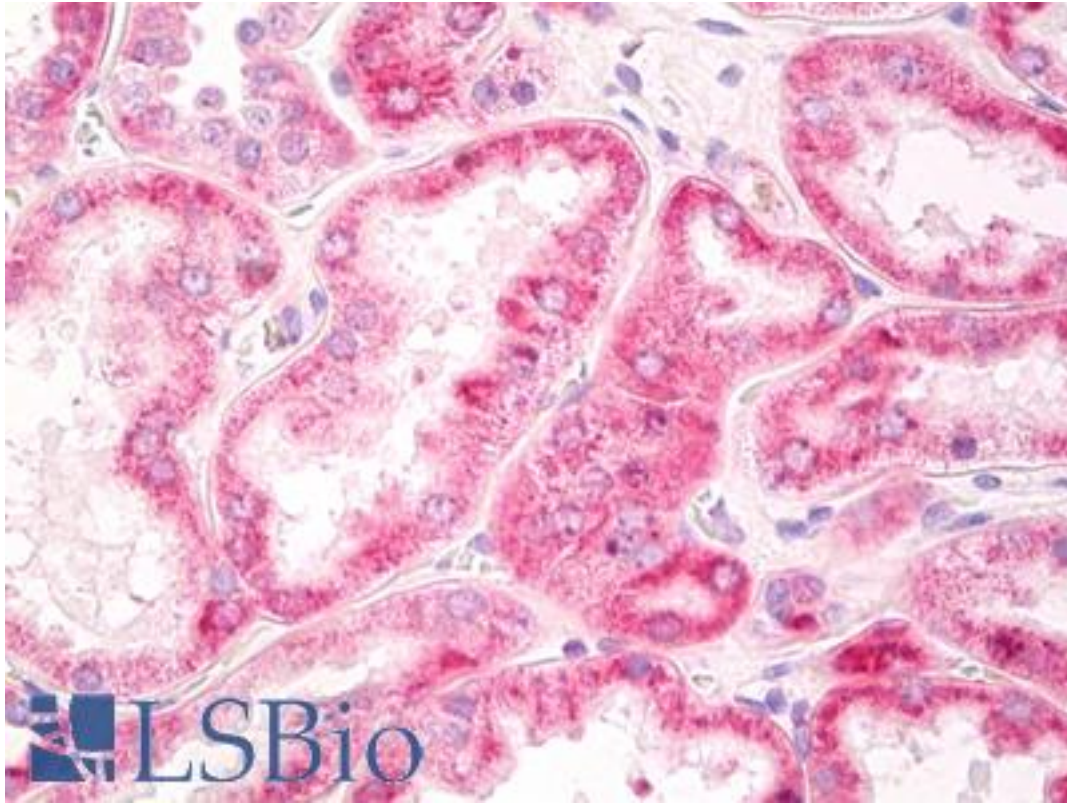


**Mitochondria Mouse anti-Human Monoclonal (113-1) Antibody - LS-B7980 - LSBio**

<b>CatalogID:</b>	LS-B7980
<b>Validation:</b>	This antibody replaces catalog number LS-C150328. It has been validated for use in the following assays: IHC-P.
<b>Target:</b>	Mitochondria
<b>Host</b>	Mitochondria antibody was produced in Mouse
<b>Clonality:</b>	Monoclonal
<b>Isotype:</b>	IgG1
<b>Clone Name:</b>	113-1
<b>Immunogen Species:</b>	Mitochondria antibody was raised against Human
<b>Immunogen:</b>	Mitochondria antibody was raised against human cell homogenate
<b>Specificity:</b>	Reacts specifically with human cells, including neurons and embryonic stem cells.
<b>Reactivity:</b>	Human
<b>Non-Reactivity:</b>	Mouse, Rat
<b>Purification:</b>	Ig fraction
<b>Presentation:</b>	PBS
<b>Recommended Storage:</b>	Aliquot and store at -20°C. Minimize freezing and thawing.
<b>Uses:</b>	IHC - Paraffin (1:50), Immunofluorescence (1:800), Western blot (1:1000) (Optimal dilution to be determined by the researcher)
<b>Size:</b>	50 µl

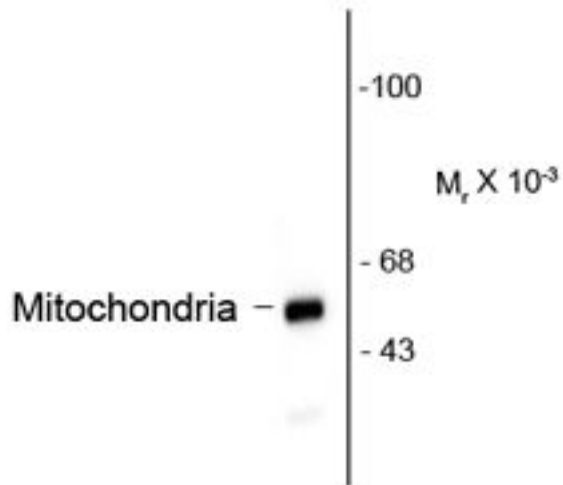
**Immunohistochemistry Image:**



Anti-Mitochondria antibody IHC of human kidney. Immunohistochemistry of formalin-fixed, paraffin-embedded tissue after heat-induced antigen retrieval. Antibody LS-B7980 dilution 1:50.

Western Blot Image:

## Anti-Mitochondria



Western blot of HeLa lysate showing specific immunolabeling of the ~60k mitochondrial protein.

Requested From:

Japan

Laboratory Reagent For In Vitro Research Use Only

Not for resale without prior written consent from LifeSpan BioSciences, Inc.

Created on 9/24/2014

© 2014 LifeSpan BioSciences