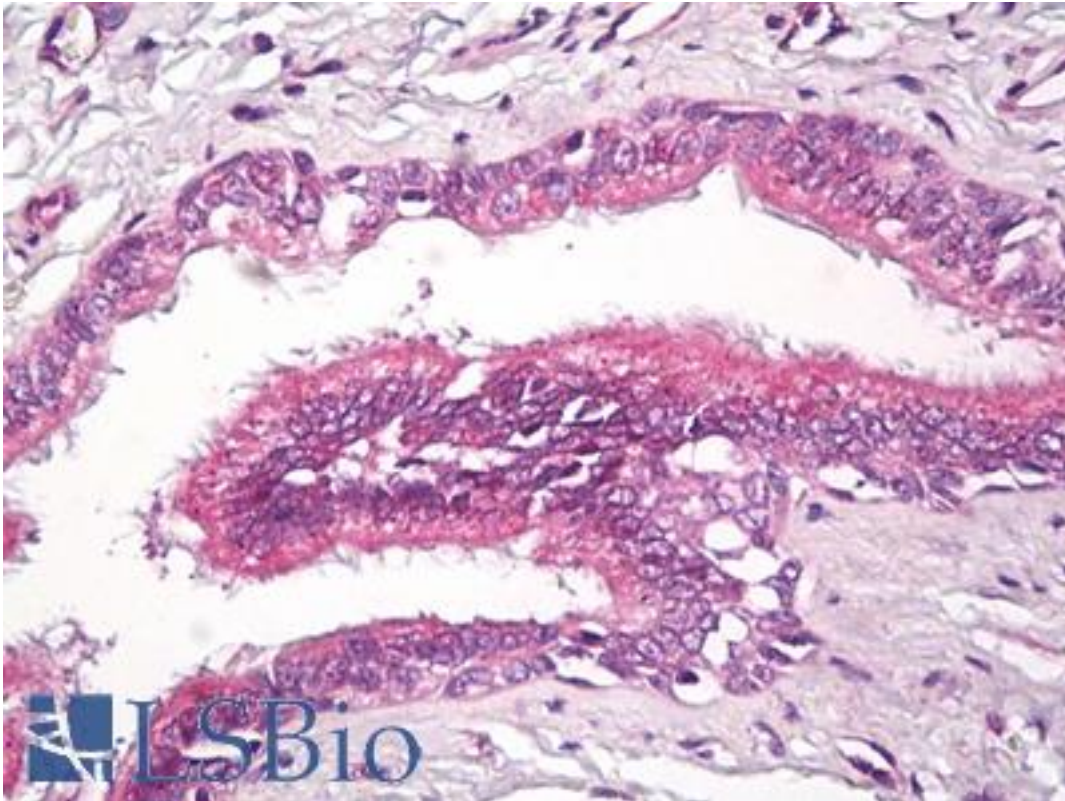


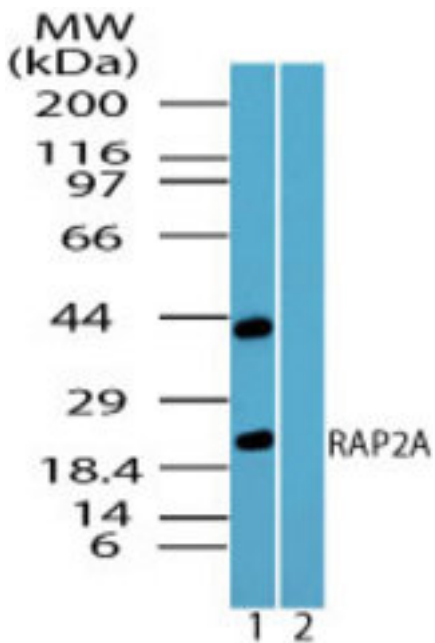
RAP2 Rabbit anti-Human Polyclonal (aa140-190) Antibody - LS-B7974 - LSBio	
CatalogID:	LS-B7974
Validation:	This antibody replaces catalog number LS-C148403. It has been validated for use in the following assays: IHC-P.
Target:	RAP2A, Member Of RAS Oncogene Family
Synonyms:	RAP2A Antibody, K-REV Antibody, Ras-related protein rap-2b Antibody, RAP2 Antibody, Ras-related protein Rap-2a Antibody, RbBP-30 Antibody, KREV Antibody
Family / Subfamily:	Ras GTPase superfamily IPR001806 / RAS oncogene
Host	RAP2A antibody was produced in Rabbit
Clonality:	Polyclonal
Isotype:	IgG
Immunogen Species:	RAP2 antibody was raised against Human
Antigen Type:	Synthetic peptide
Immunogen:	RAP2 antibody was raised against a portion of amino acids 140-190 of human RAP2A was used as the immunogen.
Specificity:	Human RAP2A
Epitope:	aa140-190
Reactivity:	Human, Monkey, Mouse, Dog, Horse, Opossum, Chicken, Xenopus
Purification:	Immunoaffinity purified
Presentation:	PBS, 0.05% BSA, 0.05% sodium azide
Recommended Storage:	Store at 4°C for short term applications. For long term storage, aliquot and store at -20°C.
Uses:	IHC - Paraffin (10 µg/ml), Western blot (0.1 - 0.3 µg/ml) (Optimal dilution to be determined by the researcher)
Size:	50 µg
Concentration:	0.5 mg/ml

Immunohistochemistry Image:



Anti-RAP2 antibody IHC of human lung, respiratory epithelium. Immunohistochemistry of formalin-fixed, paraffin-embedded tissue after heat-induced antigen retrieval. Antibody LS-B7974 dilution 10 ug/ml.

Western Blot Image:



Western blot of RAP2A in MCF7 cell lysate in the 1) absence and 2) presence of immunizing peptide using LS-B7974 at 0.1 ug/ml. Goat anti-rabbit Ig HRP secondary antibody, and PicoTect ECL substrate solution, were used for this test.

Requested From:	Japan
Laboratory Reagent For In Vitro Research Use Only	
Not for resale without prior written consent from LifeSpan BioSciences, Inc.	
Created on 9/24/2014	
© 2014 LifeSpan BioSciences	