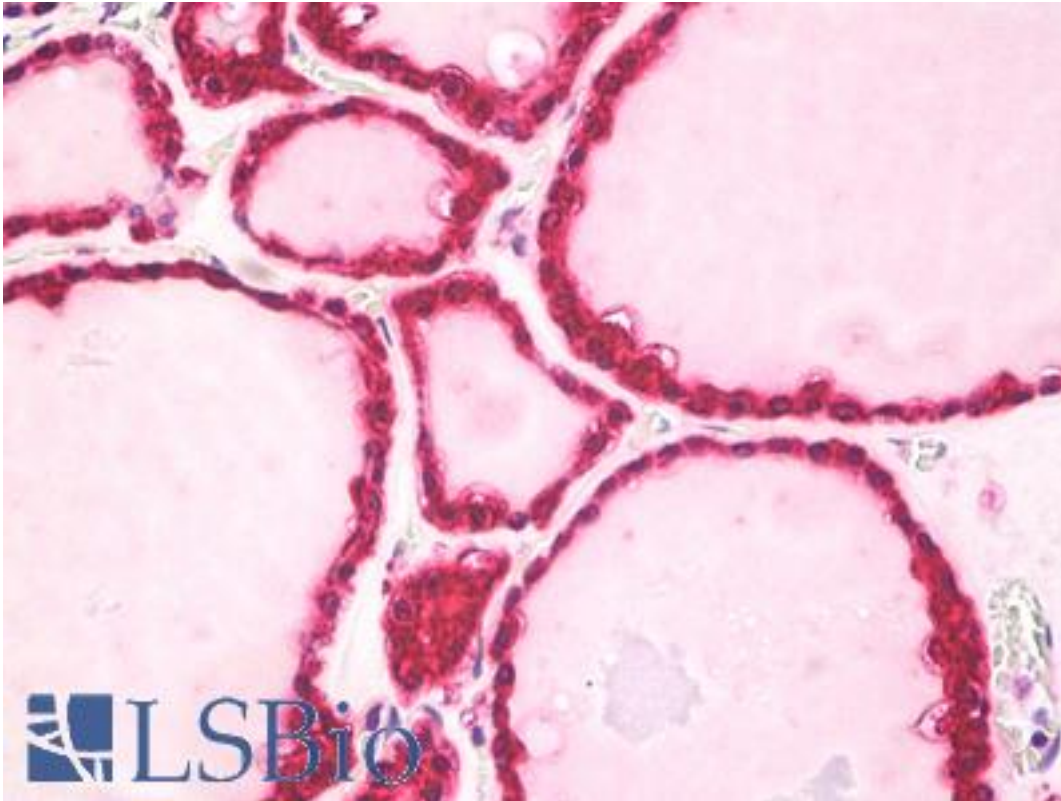


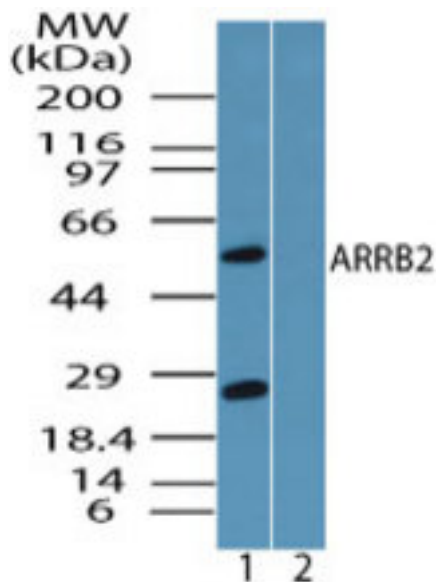
ARRB2 / Beta Arrestin 2 Rabbit anti-Human Polyclonal (aa23-40) Antibody - LS-B7973 - LSBio	
CatalogID:	LS-B7973
Validation:	This antibody replaces catalog number LS-C148523. It has been validated for use in the following assays: IHC-P.
Target:	arrestin, beta 2 (ARRB2)
Synonyms:	ARRB2 Antibody, Arrestin 3 Antibody, Arrestin beta-2 Antibody, ARB2 Antibody, ARR2 Antibody, BARR2 Antibody, Arrestin, beta 2 Antibody, Beta-arrestin-2 Antibody
Host	ARRB2 antibody was produced in Rabbit
Clonality:	Polyclonal
Isotype:	IgG
Immunogen Species:	ARRB2 / Beta Arrestin 2 antibody was raised against Human
Immunogen:	ARRB2 / Beta Arrestin 2 antibody was raised against peptide sequence corresponding to amino acids 23-40 (GKRDFVDHLDKVDVDPDG) of human ARRB2 was used as the immunogen, Gen Bank no. gb ABG47460.1 . Percent identity by BLAST analysis: Human, Gorilla, Orangutan, Gibbon, Monkey, Marmoset, Mouse, Rat, Dog, Bat, Bovine, Elephant, Panda, Horse, Rabbit, Pig (100%); Opossum, Xenopus, Zebrafish, Stickleback (94%); Hamster (88%); Beetle (82%).
Specificity:	Human ARRB2 / Beta-Arrestin 2
Epitope:	aa23-40
Reactivity:	Human, Gorilla, Orangutan, Gibbon, Monkey, Mouse, Rat, Bat, Bovine, Dog, Horse, Pig, Rabbit
Predicted Reactivity:	Xenopus, Zebrafish
Purification:	Immunoaffinity purified
Presentation:	PBS, 0.05% BSA, 0.05% sodium azide
Recommended Storage:	Store at 4°C for short term applications. For long term storage, aliquot and store at -20°C.
Uses:	IHC - Paraffin (5 µg/ml), Western blot (0.25 - 0.5 µg/ml) (Optimal dilution to be determined by the researcher)
Size:	50 µg
Concentration:	0.5 mg/ml

Immunohistochemistry Image:



Anti-ARRB2 antibody IHC of human thyroid. Immunohistochemistry of formalin-fixed, paraffin-embedded tissue after heat-induced antigen retrieval. Antibody LS-B7973 dilution 5 ug/ml.

Western Blot Image:



Western blot of ARRB2 in HUVEC cell lysate in the 1) absence and 2) presence of immunizing peptide using LS-B7973 at 0.25 ug/ml. Goat anti-rabbit Ig HRP secondary antibody, and PicoTect ECL substrate solution, were used for this test.

Requested From:

Japan

Laboratory Reagent For In Vitro Research Use Only

Not for resale without prior written consent from LifeSpan BioSciences, Inc.

Created on 9/24/2014

© 2014 LifeSpan BioSciences