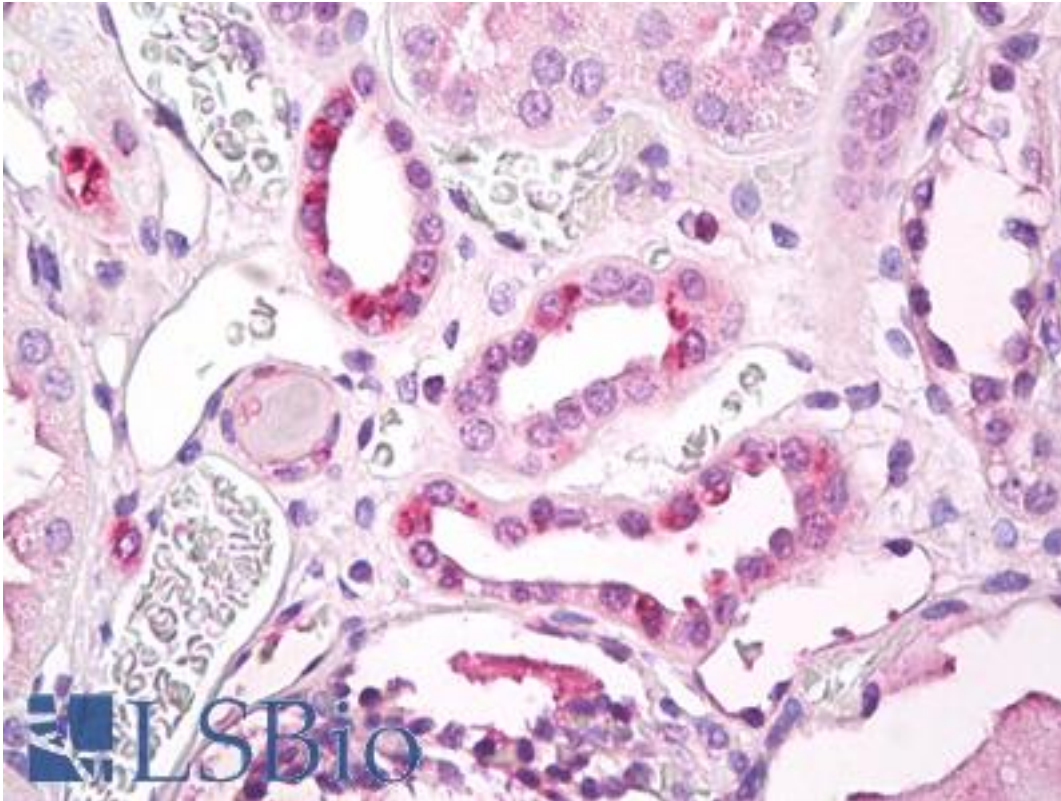


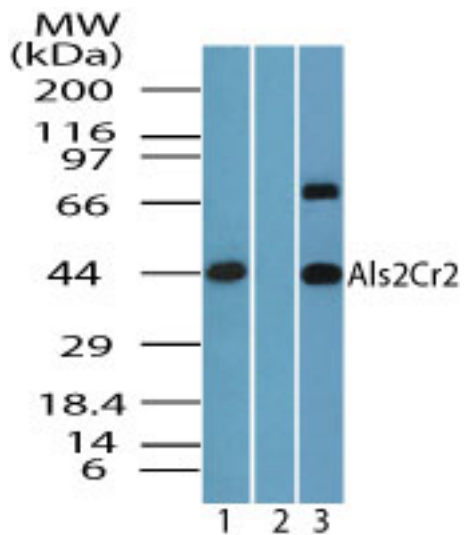
STRADB / ALS2CR2 Rabbit anti-Human Polyclonal (aa200-250) Antibody - LS-B7955 - LSBio	
CatalogID:	LS-B7955
Validation:	This antibody replaces catalog number LS-C148497. It has been validated for use in the following assays: IHC-P.
Target:	STE20-related kinase adaptor beta (STRADB)
Synonyms:	STRADB Antibody, ALS2CR2 Antibody, CALS-21 Antibody, ILP-interacting protein ILPIPA Antibody, ILPIP Antibody, ILP-interacting protein Antibody, PAK Antibody, Pseudokinase ALS2CR2 Antibody, PRO1038 Antibody, ILPIPA Antibody, STRAD beta Antibody
Family / Subfamily:	Protein Kinase / STK
Host	STRADB antibody was produced in Rabbit
Clonality:	Polyclonal
Isotype:	IgG
Immunogen Species:	STRADB / ALS2CR2 antibody was raised against Human
Antigen Type:	Synthetic peptide
Immunogen:	STRADB / ALS2CR2 antibody was raised against a portion of amino acids 200-250 of human Als2Cr2 was used as the immunogen.
Specificity:	Human STRADB
Epitope:	aa200-250
Reactivity:	Human, Chimpanzee, Bovine, Dog, Horse
Purification:	Protein A purified
Presentation:	PBS, 0.05% BSA, 0.05% sodium azide
Recommended Storage:	Store at 4°C for short term applications. For long term storage, aliquot and store at -20°C.
Uses:	IHC - Paraffin (20 µg/ml), Western blot (2 - 4 µg/ml) (Optimal dilution to be determined by the researcher)
Size:	50 µg
Concentration:	0.5 mg/ml

Immunohistochemistry Image:



Anti-STRADB / ALS2CR2 antibody IHC of human kidney, tubules. Immunohistochemistry of formalin-fixed, paraffin-embedded tissue after heat-induced antigen retrieval. Antibody LS-B7955 dilution 20 ug/ml.

Western Blot Image:



Western blot of Als2Cr2 in human brain lysate in the 1) absence and 2) presence of immunizing peptide, and 3) mouse brain using LS-B7955 at 4.0 ug/ml and 2 ug/ml, respectively.

Requested From:

Japan

Laboratory Reagent For In Vitro Research Use Only

Not for resale without prior written consent from LifeSpan BioSciences, Inc.

Created on 9/24/2014

© 2014 LifeSpan BioSciences