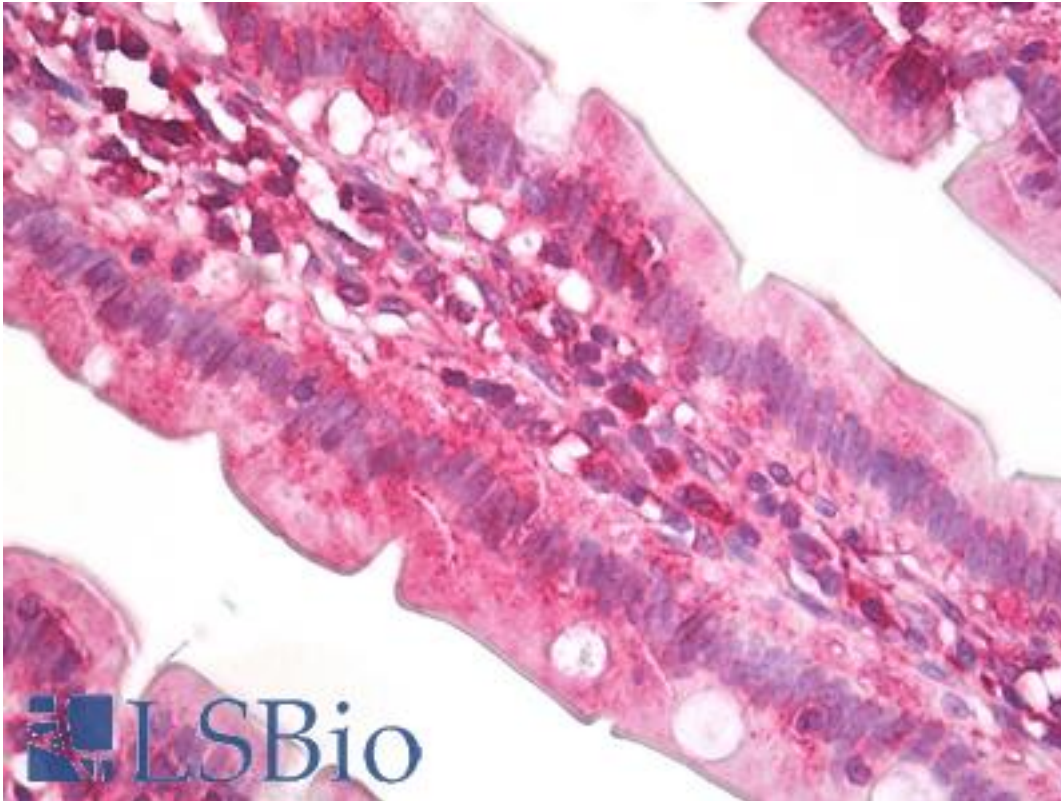


EIF4A2 Rabbit anti-Human Polyclonal (aa50-100) Antibody - LS-B7953 - LSBio

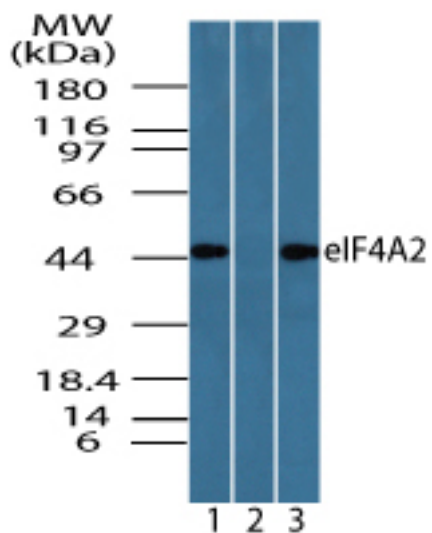
CatalogID:	LS-B7953
Validation:	This antibody replaces catalog number LS-C148464. It has been validated for use in the following assays: IHC-P.
Target:	eukaryotic translation initiation factor 4A2 (EIF4A2)
Synonyms:	EIF4A2 Antibody, BM-010 Antibody, EIF-4A-II Antibody, EIF4A Antibody, EIF4A-II Antibody, EIF4F Antibody, DDX2B Antibody
Host	EIF4A2 antibody was produced in Rabbit
Clonality:	Polyclonal
Isotype:	IgG
Immunogen Species:	EIF4A2 antibody was raised against Human
Antigen Type:	Synthetic peptide
Immunogen:	EIF4A2 antibody was raised against a portion of amino acids 50-100 of human eIF4A2 was used as the immunogen.
Specificity:	Human EIF4A2
Epitope:	aa50-100
Reactivity:	Human, Chimpanzee, Monkey, Mouse, Dog, Chicken, Macaque
Purification:	Immunoaffinity purified
Presentation:	PBS, 0.05% BSA, 0.05% sodium azide
Recommended Storage:	Store at 4°C for short term applications. For long term storage, aliquot and store at -20°C.
Uses:	IHC - Paraffin, Western blot (0.03 - 0.05 µg/ml) (Optimal dilution to be determined by the researcher)
Size:	50 µg
Concentration:	0.5 mg/ml

Immunohistochemistry Image:



Anti-eIF4A antibody IHC of human small intestine. Immunohistochemistry of formalin-fixed, paraffin-embedded tissue after heat-induced antigen retrieval. Antibody LS-B7953 dilution 10 ug/ml.

Western Blot Image:



Western blot of eIF4A2 in Jurkat cell lysate in the 1) absence, 2) presence of immunizing peptide and 3) 3T3 cell lysate using LS-B7953 at 0.05 ug/ml, 0.05 ug/ml and 0.025 ug/ml, respectively.

Requested From:

Japan

Laboratory Reagent For In Vitro Research Use Only

Not for resale without prior written consent from LifeSpan BioSciences, Inc.

Created on 9/24/2014

© 2014 LifeSpan BioSciences