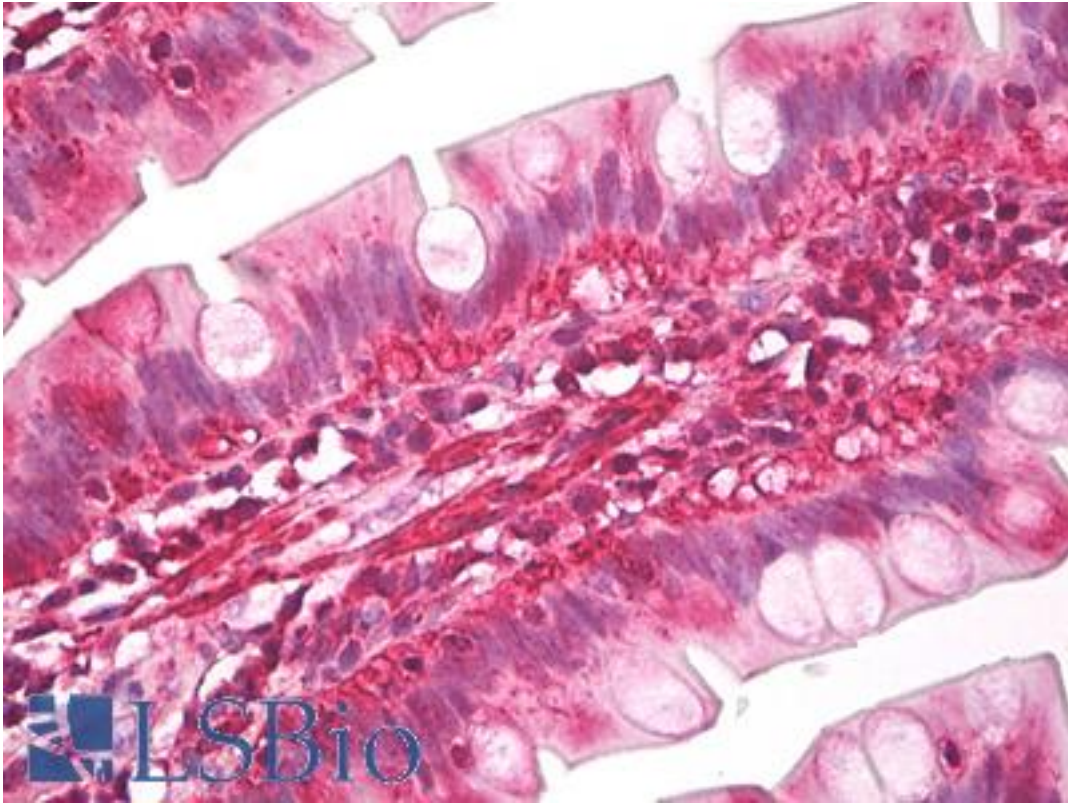


Latexin / MUM Rabbit anti-Human Polyclonal (aa200-250) Antibody - LS-B7950 - LSBio

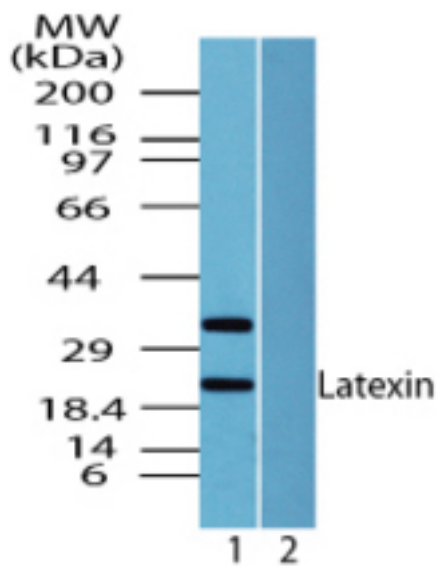
CatalogID:	LS-B7950
Validation:	This antibody replaces catalog number LS-C148451. It has been validated for use in the following assays: IHC-P.
Target:	latexin (LXN)
Synonyms:	LXN Antibody, ECI Antibody, MUM Antibody, Protein MUM Antibody, TCI Antibody, Latexin Antibody
Host	LXN antibody was produced in Rabbit
Clonality:	Polyclonal
Isotype:	IgG
Immunogen Species:	Latexin / MUM antibody was raised against Human
Antigen Type:	Synthetic peptide
Immunogen:	Latexin / MUM antibody was raised against a portion of amino acids 200-250 of human Latexin was used as the immunogen.
Specificity:	Human LXN
Epitope:	aa200-250
Reactivity:	Human, Mouse, Rat, Bovine
Purification:	Immunoaffinity purified
Presentation:	PBS, 0.05% BSA, 0.05% sodium azide
Recommended Storage:	Store at 4°C for short term applications. For long term storage, aliquot and store at -20°C.
Uses:	IHC - Paraffin (5 µg/ml), Western blot (0.01 - 0.1 µg/ml) (Optimal dilution to be determined by the researcher)
Size:	50 µg
Concentration:	0.5 mg/ml

Immunohistochemistry Image:



Anti-Latexin / MUM antibody IHC of human small intestine. Immunohistochemistry of formalin-fixed, paraffin-embedded tissue after heat-induced antigen retrieval. Antibody LS-B7950 dilution 5 ug/ml.

Western Blot Image:



Western blot of Latexin in human pancreas lysate in the 1) absence and 2) presence of immunizing peptide using LS-B7950 at 0.01 ug/ml.

Requested From:

Japan

Laboratory Reagent For In Vitro Research Use Only

Not for resale without prior written consent from LifeSpan BioSciences, Inc.

Created on 9/24/2014

© 2014 LifeSpan BioSciences