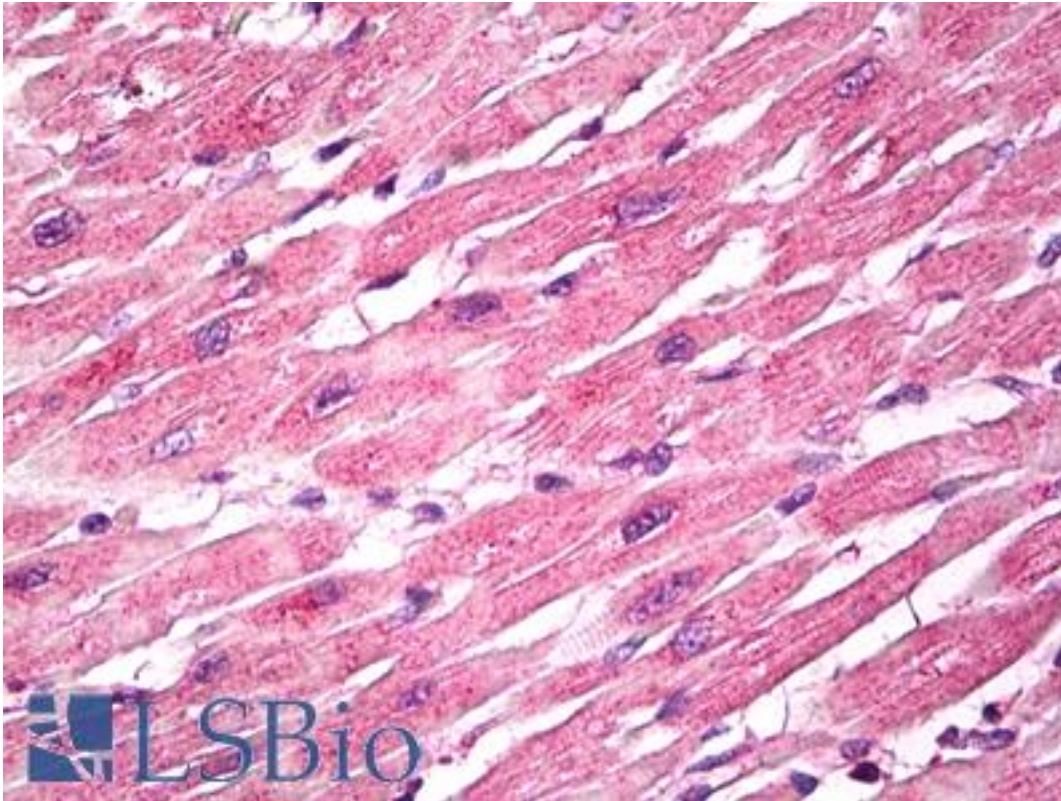


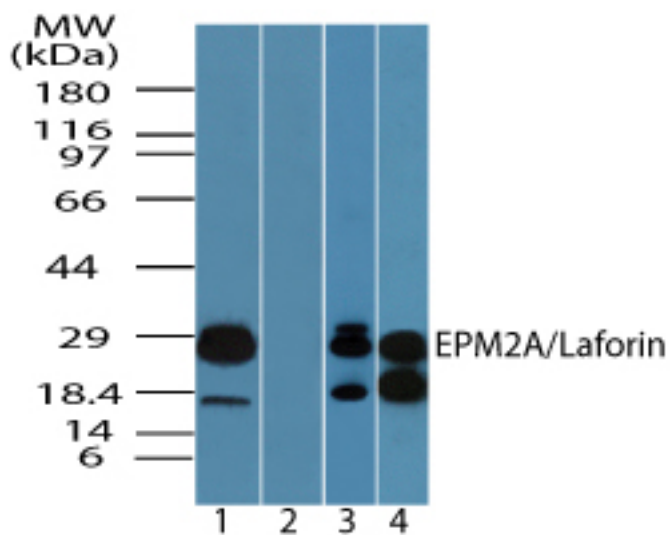
EPM2A / Laforin Rabbit anti-Human Polyclonal (aa80-130) Antibody - LS-B7949 - LSBio	
CatalogID:	LS-B7949
Validation:	This antibody replaces catalog number LS-C148449. It has been validated for use in the following assays: IHC-P.
Target:	epilepsy, progressive myoclonus type 2A, Lafora disease (laforin) (EPM2A)
Synonyms:	EPM2A Antibody, EPM2 Antibody, LAFPTPase Antibody, LDE Antibody, Lafora PTPase Antibody, MELF Antibody, Laforin Antibody, LD Antibody
Family / Subfamily:	Protein Phosphatase / Laforin
Host	EPM2A antibody was produced in Rabbit
Clonality:	Polyclonal
Isotype:	IgG
Immunogen Species:	EPM2A / Laforin antibody was raised against Human
Antigen Type:	Synthetic peptide
Immunogen:	EPM2A / Laforin antibody was raised against a portion of amino acids 80-130 of human EPM2A was used as the immunogen.
Specificity:	Human EPM2A
Epitope:	aa80-130
Reactivity:	Human, Bovine
Purification:	Immunoaffinity purified
Presentation:	PBS, 0.05% BSA, 0.05% sodium azide
Recommended Storage:	Store at 4°C for short term applications. For long term storage, aliquot and store at -20°C.
Uses:	IHC - Paraffin (10 µg/ml), Western blot (0.25 - 0.5 µg/ml) (Optimal dilution to be determined by the researcher)
Size:	50 µg
Concentration:	0.5 mg/ml

Immunohistochemistry Image:



Anti-EPM2A / Laforin antibody IHC of human heart. Immunohistochemistry of formalin-fixed, paraffin-embedded tissue after heat-induced antigen retrieval. Antibody LS-B7949 dilution 10 ug/ml.

Western Blot Image:



Western blot of EPM2A in human heart lysate in the 1) absence and 2) presence of immunizing peptide, 3) mouse heart and 4) rat heart lysate using LS-B7949 at 0.25 ug/ml, 0.5 ug/ml and 0.5 ug/ml, respectively.

Requested From:

Japan

Laboratory Reagent For In Vitro Research Use Only

Not for resale without prior written consent from LifeSpan BioSciences, Inc.

Created on 9/24/2014

© 2014 LifeSpan BioSciences