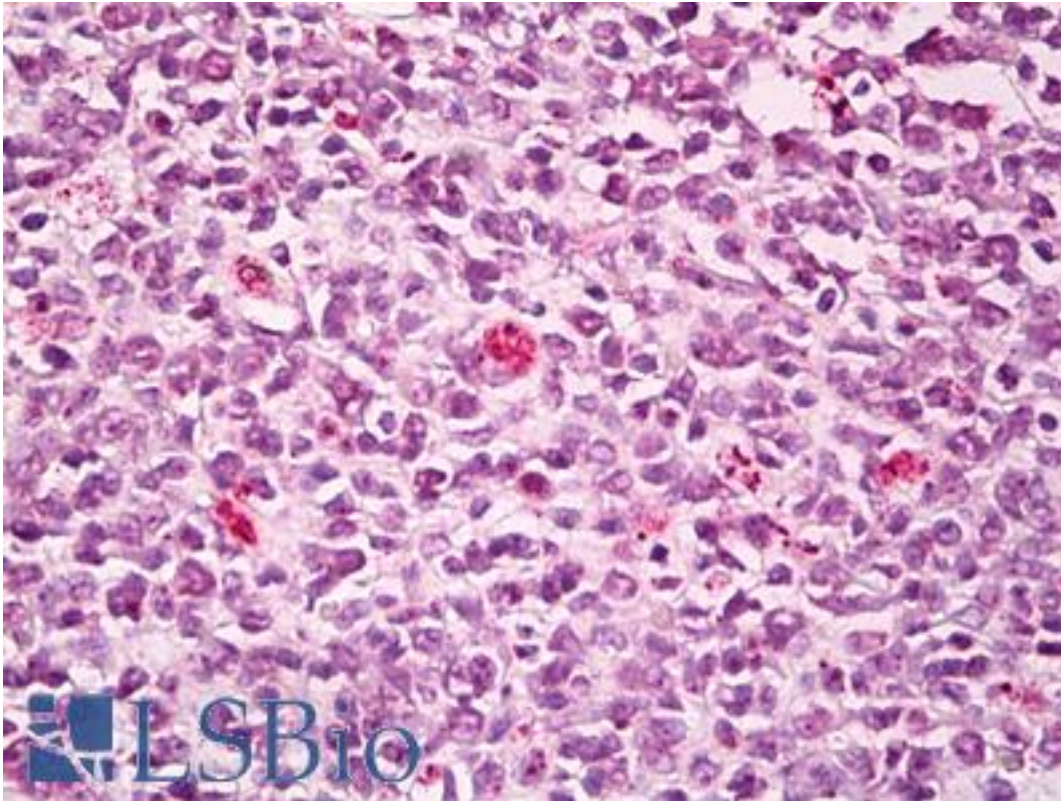


SWAP70 Rabbit anti-Human Polyclonal (aa1-50) Antibody - LS-B7947 - LSBio

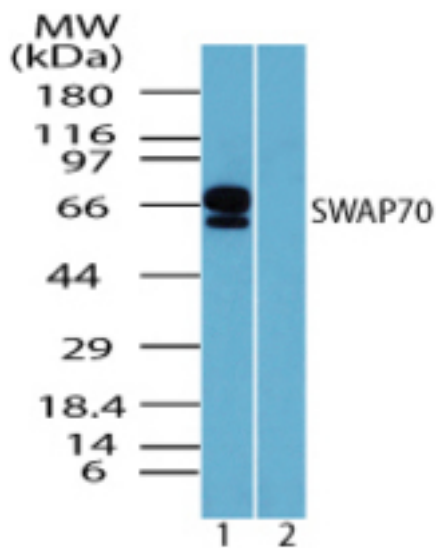
| | |
|-----------------------------|--|
| CatalogID: | LS-B7947 |
| Validation: | This antibody replaces catalog number LS-C148445. It has been validated for use in the following assays: IHC-P. |
| Target: | SWAP switching B-cell complex 70kDa subunit (SWAP70) |
| Synonyms: | SWAP70 Antibody, KIAA0640 Antibody, HSPC321 Antibody, SWAP-70 Antibody, Switch-associated protein 70 Antibody |
| Host | SWAP70 antibody was produced in Rabbit |
| Clonality: | Polyclonal |
| Isotype: | IgG |
| Immunogen Species: | SWAP70 antibody was raised against Human |
| Antigen Type: | Synthetic peptide |
| Immunogen: | SWAP70 antibody was raised against a portion of amino acids 1-50 of human SWAP70 was used as the immunogen. |
| Specificity: | Human SWAP70 |
| Epitope: | aa1-50 |
| Reactivity: | Human |
| Purification: | Protein A purified |
| Presentation: | PBS, 0.05% BSA, 0.05% sodium azide |
| Recommended Storage: | Store at 4°C for short term applications. For long term storage, aliquot and store at -20°C. |
| Uses: | IHC - Paraffin (10 µg/ml), Western blot (0.25 - 0.5 µg/ml) (Optimal dilution to be determined by the researcher) |
| Size: | 50 µg |
| Concentration: | 0.5 mg/ml |

Immunohistochemistry Image:



Anti-SWAP70 antibody IHC of human tonsil, germinal center. Immunohistochemistry of formalin-fixed, paraffin-embedded tissue after heat-induced antigen retrieval. Antibody LS-B7947 dilution 10 ug/ml.

Western Blot Image:



Western blot of SWAP70 in human spleen lysate in the 1) absence and 2) presence of immunizing peptide using LS-B7947 at 0.25 ug/ml.

Requested From:

Japan

Laboratory Reagent For In Vitro Research Use Only

Not for resale without prior written consent from LifeSpan BioSciences, Inc.

Created on 9/24/2014

© 2014 LifeSpan BioSciences