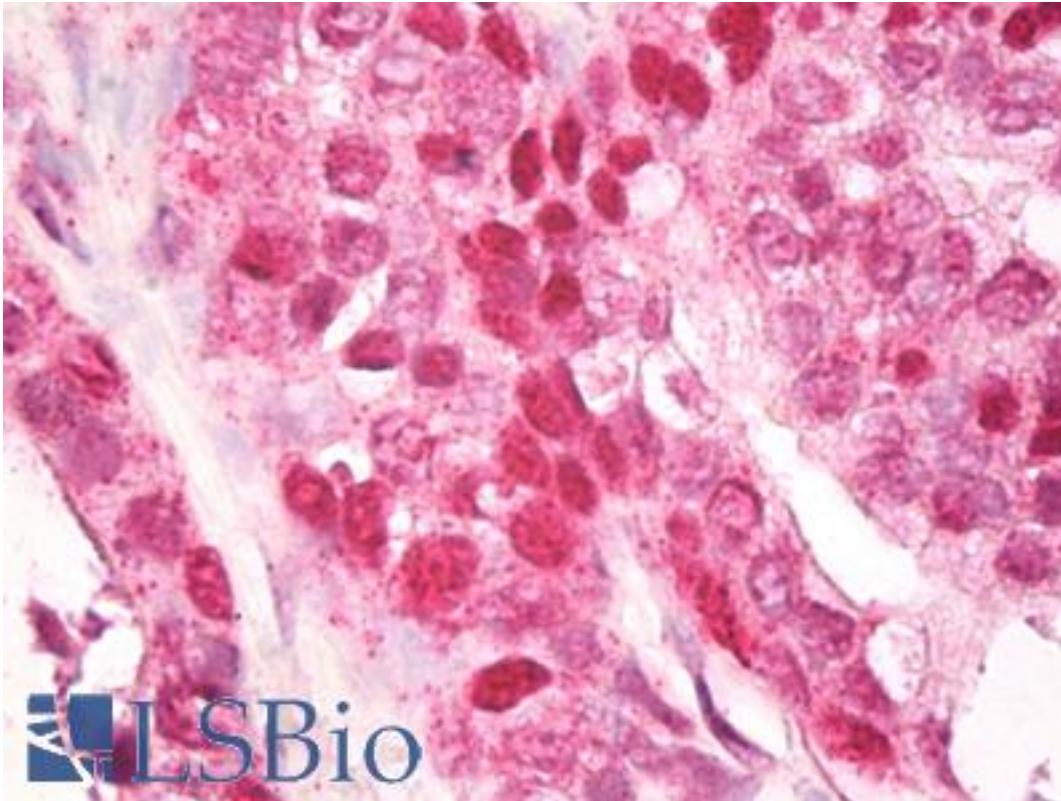


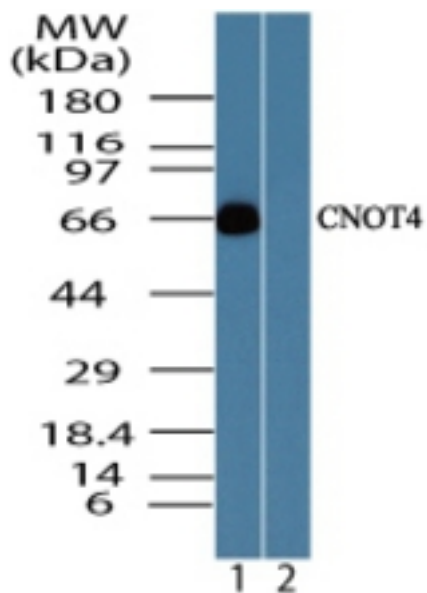
CNOT4 / CLONE243 Rabbit anti-Human Polyclonal (aa50-100) Antibody - LS-B7946 - LSBio	
CatalogID:	LS-B7946
Validation:	This antibody replaces catalog number LS-C148440. It has been validated for use in the following assays: IHC-P.
Target:	CCR4-NOT transcription complex, subunit 4 (CNOT4)
Synonyms:	CNOT4 Antibody, CCR4-associated factor 4 Antibody, NOT4 Antibody, Not4-n Antibody, NOT4H Antibody, CLONE243 Antibody
Host	CNOT4 antibody was produced in Rabbit
Clonality:	Polyclonal
Isotype:	IgG
Immunogen Species:	CNOT4 / CLONE243 antibody was raised against Human
Antigen Type:	Synthetic peptide
Immunogen:	CNOT4 / CLONE243 antibody was raised against a portion of amino acids 50-100 of human CNOT4 was used as the immunogen.
Specificity:	Human CNOT4
Epitope:	aa50-100
Reactivity:	Human, Mouse, Rat, Bovine, Chicken, Xenopus
Purification:	Immunoaffinity purified
Presentation:	PBS, 0.05% BSA, 0.05% sodium azide
Recommended Storage:	Store at 4°C for short term applications. For long term storage, aliquot and store at -20°C.
Uses:	IHC - Paraffin (10 µg/ml), Western blot (0.05 - 0.1 µg/ml) (Optimal dilution to be determined by the researcher)
Size:	50 µg
Concentration:	0.5 mg/ml

Immunohistochemistry Image:



Anti-CNOT4 / CLONE243 antibody IHC of human prostate. Immunohistochemistry of formalin-fixed, paraffin-embedded tissue after heat-induced antigen retrieval. Antibody LS-B7946 dilution 10 ug/ml.

Western Blot Image:



Western blot of CNOT4 in human skeletal muscle lysate in the 1) absence and 2) presence of immunizing peptide using LS-B7946 at 0.05 ug/ml.

Requested From:

Japan

Laboratory Reagent For In Vitro Research Use Only

Not for resale without prior written consent from LifeSpan BioSciences, Inc.

Created on 9/24/2014

© 2014 LifeSpan BioSciences