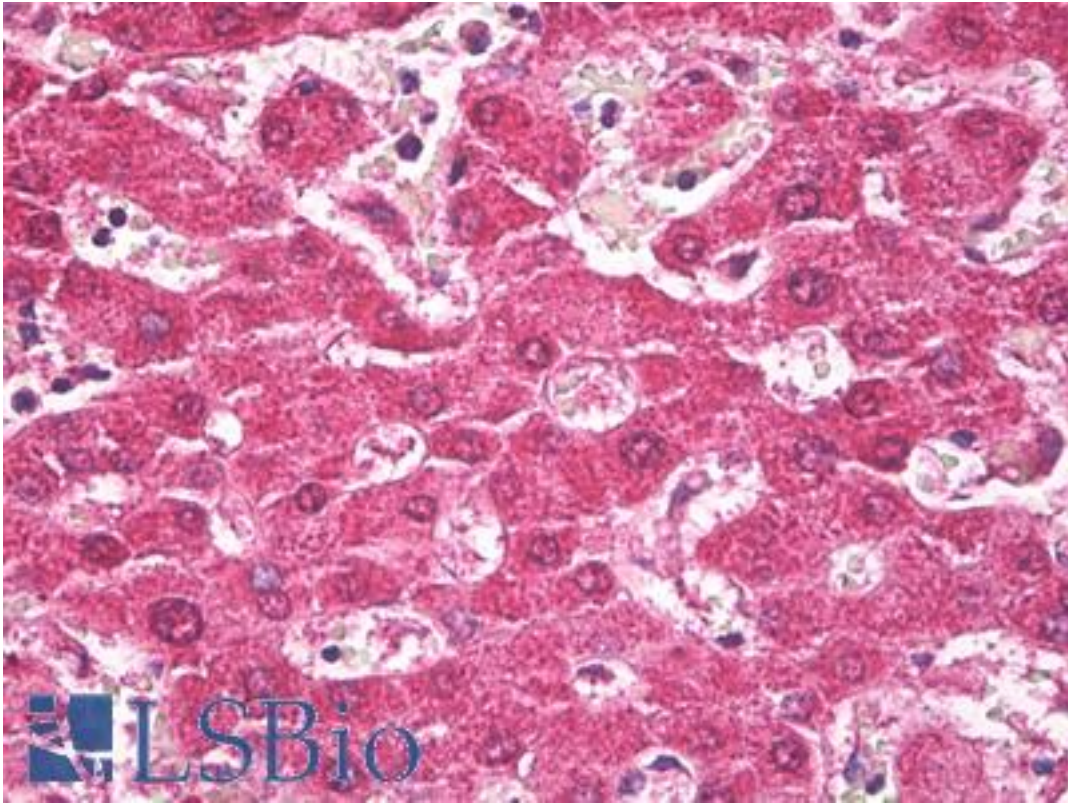


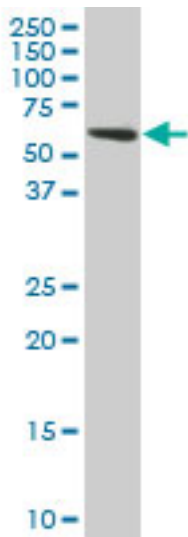
TROVE2 Mouse anti-Human Monoclonal (2B4) Antibody - LS-B7944 - LSBio	
CatalogID:	LS-B7944
Validation:	This antibody replaces catalog number LS-C139524. It has been validated for use in the following assays: IHC-P.
Target:	TROVE domain family, member 2 (TROVE2)
Synonyms:	TROVE2 Antibody, 60 kDa ribonucleoprotein Ro Antibody, 60 kDa Ro protein Antibody, Sjogren syndrome antigen A2 Antibody, TROVE domain family member 2 Antibody, Ro 60 kDa autoantigen Antibody, RORNPN Antibody, SSA2 Antibody, RO60 Antibody, SS-A Antibody, TROVE domain family, member 2 Antibody
Host	TROVE2 antibody was produced in Mouse
Clonality:	Monoclonal
Isotype:	IgG2a,k
Clone Name:	2B4
Immunogen Species:	TROVE2 antibody was raised against Human
Antigen Type:	Recombinant protein
Immunogen:	TROVE2 antibody was raised against recombinant protein
Specificity:	Human TROVE2
Reactivity:	Human
Purification:	Protein A purified
Presentation:	PBS, pH 7.2
Recommended Storage:	Short term 4°C, long term aliquot and store at -20°C, avoid freeze thaw cycles.
Usage Summary:	Sandwich ELISA: Recombinant protein. Western Blot: Cell lysate, Recombinant protein.
Uses:	IHC - Paraffin (1:100), Western blot (1:500 - 1:1000), ELISA (Optimal dilution to be determined by the researcher)
Size:	50 µg
Concentration:	0.48 mg/ml

Immunohistochemistry Image:



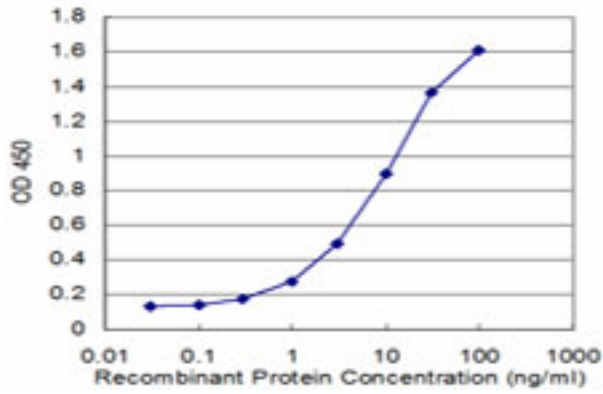
Anti-TROVE2 antibody IHC of human liver. Immunohistochemistry of formalin-fixed, paraffin-embedded tissue after heat-induced antigen retrieval. Antibody LS-B7944 dilution 1:100.

Western Blot Image:



TROVE2 monoclonal antibody (M01), clone 2B4. Western blot of TROVE2 expression in HeLa.

ELISA Image:



Detection limit for recombinant GST tagged TROVE2 is approximately 0.3 ng/ml as a capture antibody.

Requested From:

Japan

Laboratory Reagent For In Vitro Research Use Only

Not for resale without prior written consent from LifeSpan BioSciences, Inc.

Created on 9/24/2014

© 2014 LifeSpan BioSciences