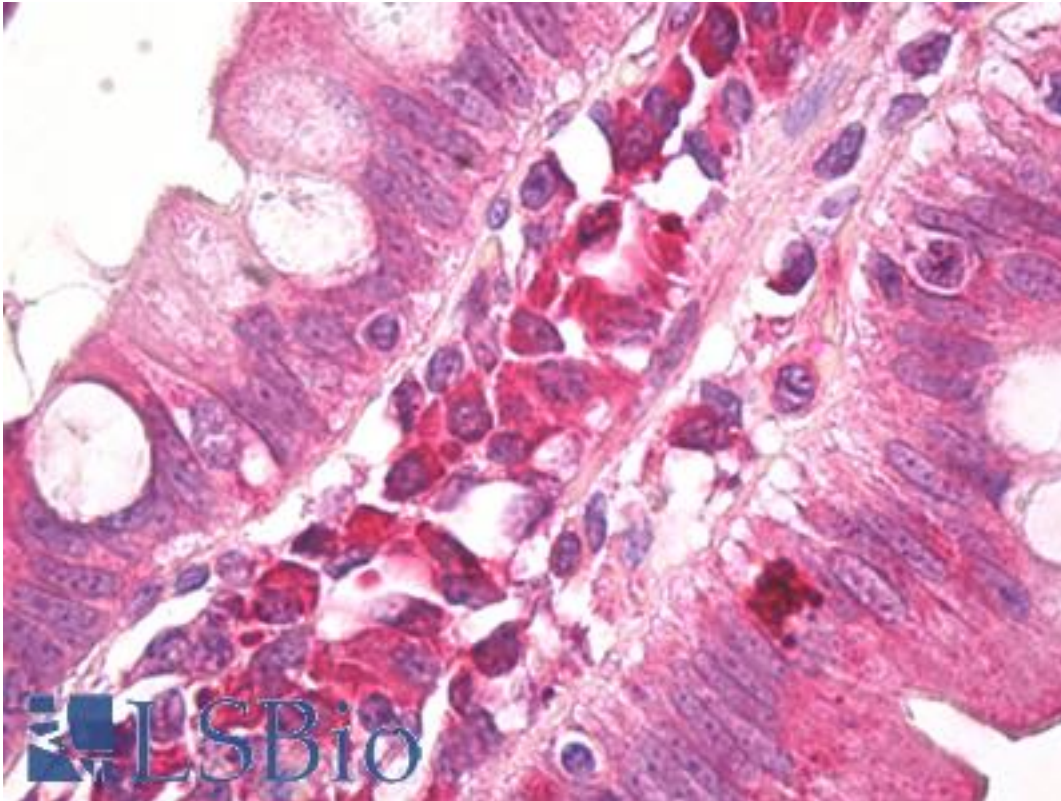


AMBRA1 Rabbit anti-Human Polyclonal (aa1-50) Antibody - LS-B7940 - LSBio

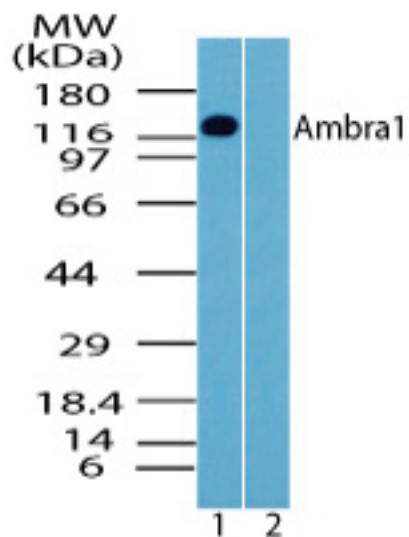
CatalogID:	LS-B7940
Validation:	This antibody replaces catalog number LS-C148356. It has been validated for use in the following assays: IHC-P.
Target:	autophagy/beclin-1 regulator 1 (AMBRA1)
Synonyms:	AMBRA1 Antibody, Autophagy/beclin-1 regulator 1 Antibody, KIAA1736 Antibody, WD repeat domain 94 Antibody, WDR94 Antibody, DCAF3 Antibody
Host	AMBRA1 antibody was produced in Rabbit
Clonality:	Polyclonal
Isotype:	IgG
Immunogen Species:	AMBRA1 antibody was raised against Human
Antigen Type:	Synthetic peptide
Immunogen:	AMBRA1 antibody was raised against a portion of amino acids 1-50 of human Ambra1 was used as the immunogen.
Specificity:	Human AMBRA1
Epitope:	aa1-50
Reactivity:	Human, Mouse, Rat, Bovine, Chicken
Purification:	Protein G purified
Presentation:	PBS, 0.05% BSA, 0.05% sodium azide
Recommended Storage:	Store at 4°C, stable for 6 months. For long term storage, aliquot and store at -20°C.
Uses:	IHC - Paraffin (10 µg/ml), Western blot (0.5 - 2 µg/ml) (Optimal dilution to be determined by the researcher)
Size:	50 µg
Concentration:	0.5 mg/ml

Immunohistochemistry Image:



Anti-AMBRA1 antibody IHC of human small intestine. Immunohistochemistry of formalin-fixed, paraffin-embedded tissue after heat-induced antigen retrieval. Antibody LS-B7940 dilution 10 ug/ml.

Western Blot Image:



Western blot of Ambra1 in human brain lysate in the 1) absence and 2) presence of immunizing peptide using LS-B7940 at 1 ug/ml.

Requested From:

Japan

Laboratory Reagent For In Vitro Research Use Only

Not for resale without prior written consent from LifeSpan BioSciences, Inc.

Created on 9/24/2014

© 2014 LifeSpan BioSciences