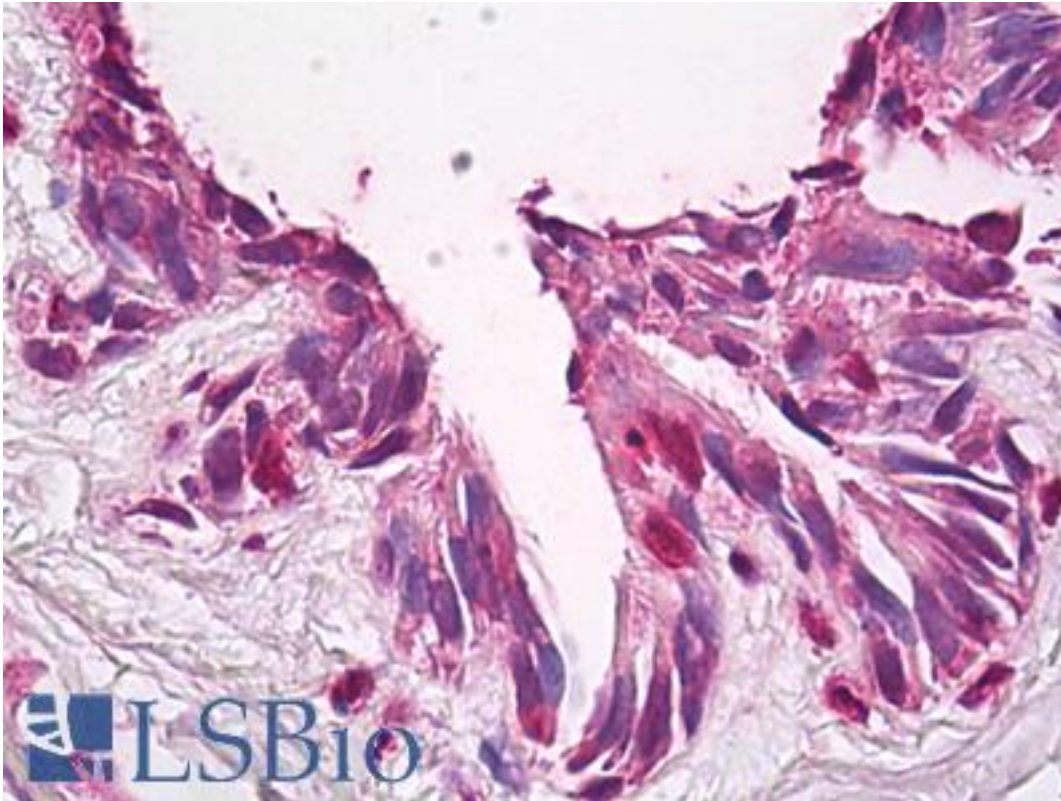


FUZ / FY Rabbit anti-Human Polyclonal (aa338-355) Antibody - LS-B7939 - LSBio

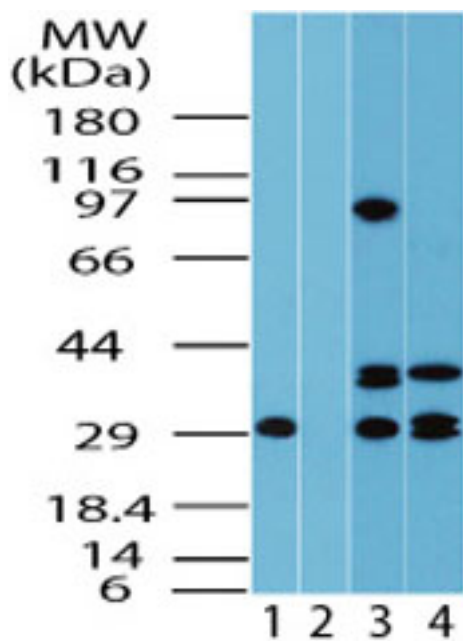
CatalogID:	LS-B7939
Validation:	This antibody replaces catalog number LS-C148354. It has been validated for use in the following assays: IHC-P.
Target:	fuzzy planar cell polarity protein
Synonyms:	FUZ Antibody, FY Antibody, Fuzzy homolog (Drosophila) Antibody, NTD Antibody, Protein fuzzy homolog Antibody
Host	FUZ antibody was produced in Rabbit
Clonality:	Polyclonal
Isotype:	IgG
Immunogen Species:	FUZ / FY antibody was raised against Human
Antigen Type:	Synthetic peptide
Immunogen:	FUZ / FY antibody was raised against a synthetic peptide corresponding to amino acids 338-355 (TSTHFPPEPGPPEKTEDE) of human FUZ was used as immunogen, GenBank no NP_079405.2. Percent identity by BLAST analysis: Human, Gorilla, Gibbon (100%); Monkey (94%); Marmoset (89%).
Specificity:	Human FUZ
Epitope:	aa338-355
Reactivity:	Human, Gorilla, Gibbon, Mouse, Rat
Predicted Reactivity:	Monkey
Purification:	Protein G purified
Presentation:	PBS, 0.05% BSA, 0.05% sodium azide
Recommended Storage:	Store at 4°C for short term applications. For long term storage, aliquot and store at -20°C.
Uses:	IHC - Paraffin (15 µg/ml), Western blot (2 - 6 µg/ml) (Optimal dilution to be determined by the researcher)
Size:	50 µg
Concentration:	0.5 mg/ml

Immunohistochemistry Image:



Anti-FUZ / FY antibody IHC of human lung. Immunohistochemistry of formalin-fixed, paraffin-embedded tissue after heat-induced antigen retrieval. Antibody LS-B7939 dilution 15 ug/ml.

Western Blot Image:



Western blot of FUZ in human lung lysate in the 1) absence and 2) presence of immunizing peptide, 3) mouse lung and 4) rat lung using LS-B7939 at 2.0 ug/ml, 2.0 ug/ml and 6.0 ug/ml respectively.

Requested From:	Japan
Laboratory Reagent For In Vitro Research Use Only	
Not for resale without prior written consent from LifeSpan BioSciences, Inc.	
Created on 9/24/2014	
© 2014 LifeSpan BioSciences	