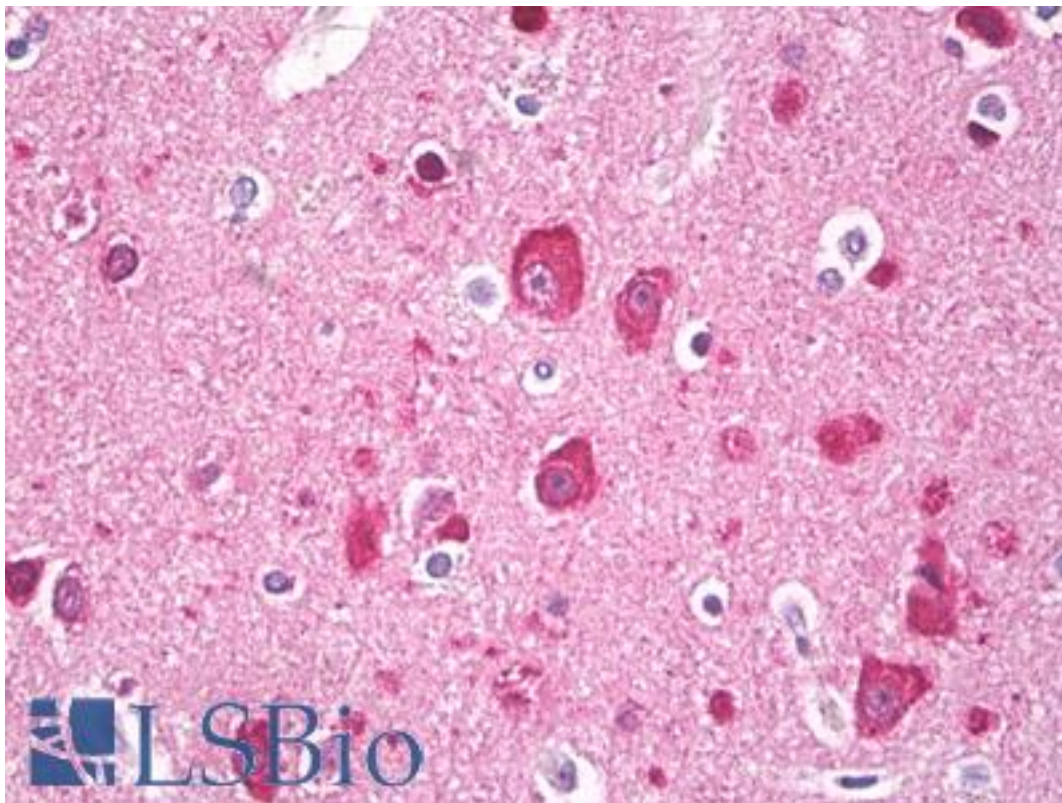


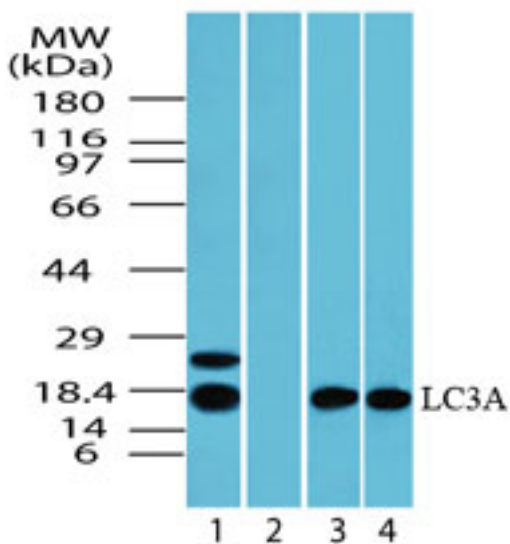
MAP1LC3A / LC3A Rabbit anti-Human Polyclonal (aa1-50) Antibody - LS-B7938 - LSBio	
CatalogID:	LS-B7938
Validation:	This antibody replaces catalog number LS-C148341. It has been validated for use in the following assays: IHC-P.
Target:	microtubule-associated protein 1 light chain 3 alpha (MAP1LC3A)
Synonyms:	MAP1LC3A Antibody, ATG8E Antibody, LC3 Antibody, LC3A Antibody, MAP1BLC3 Antibody, MAP1A/1B light chain 3 A Antibody, MAP1A/MAP1B LC3 A Antibody, MAP1A/MAP1B light chain 3 A Antibody, MAP1ALC3 Antibody
Host	MAP1LC3A antibody was produced in Rabbit
Clonality:	Polyclonal
Isotype:	IgG
Immunogen Species:	MAP1LC3A / LC3A antibody was raised against Human
Antigen Type:	Synthetic peptide
Immunogen:	MAP1LC3A / LC3A antibody was raised against a portion of amino acids 1-50 of human MAP1 LC3A was used as the immunogen.
Specificity:	Human MAP1LC3A
Epitope:	aa1-50
Reactivity:	Human, Mouse, Rat, Bovine, Opossum, Zebrafish
Purification:	Immunoaffinity purified
Presentation:	PBS, 0.05% BSA, 0.05% sodium azide
Recommended Storage:	Store at 4°C for short term applications. For long term storage, aliquot and store at -20°C.
Uses:	IHC - Paraffin (10 µg/ml), Western blot (0.1 - 1 µg/ml) (Optimal dilution to be determined by the researcher)
Size:	50 µg
Concentration:	0.5 mg/ml

Immunohistochemistry Image:



Anti-LC3 antibody IHC of human brain, cortex neurons. Immunohistochemistry of formalin-fixed, paraffin-embedded tissue after heat-induced antigen retrieval. Antibody LS-B7938 dilution 10 ug/ml.

Western Blot Image:



Western blot of LC3A in human brain lysate in the 1) absence and 2) presence of immunizing peptide, and in 3) mouse brain lysate, and 4) rat brain lysate using LS-B7938 at 1.0 ug/ml, 1.0 ug/ml, 0.1 ug/ml and 0.1 ug/ml, respectively. Goat anti-rabbit Ig HRP secondary antibody, and PicoTect ECL substrate solution, were used for this test.

Requested From:

Japan

Laboratory Reagent For In Vitro Research Use Only

Not for resale without prior written consent from LifeSpan BioSciences, Inc.

Created on 9/24/2014

© 2014 LifeSpan BioSciences