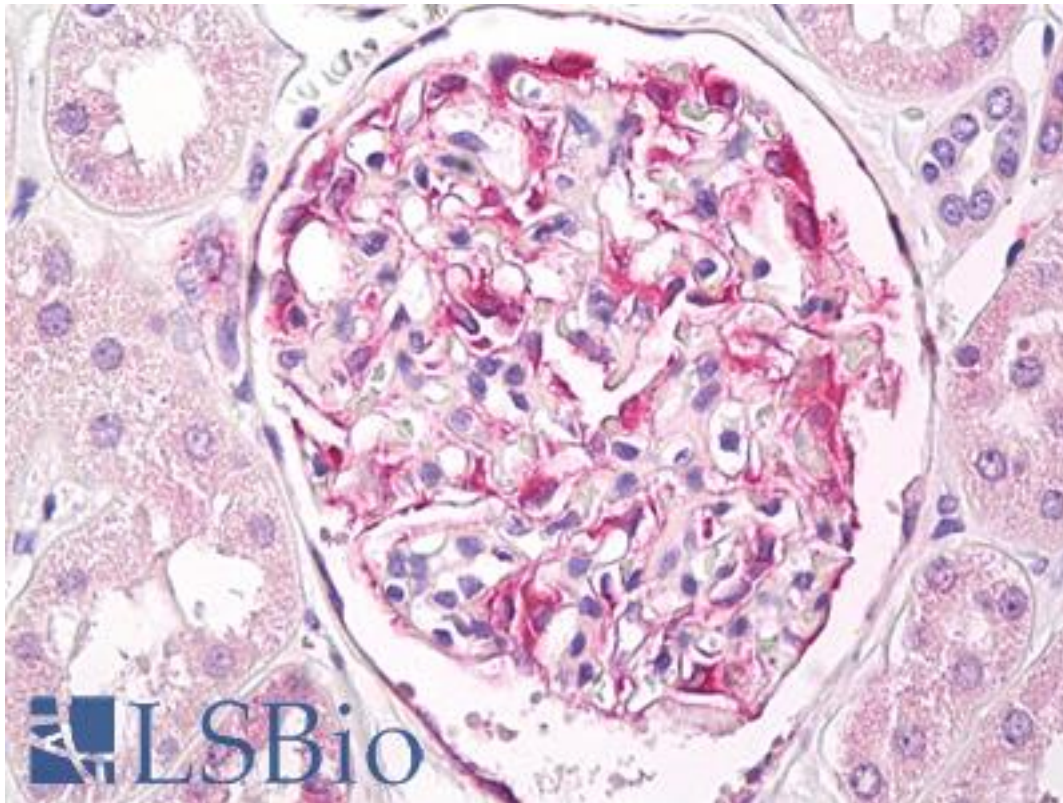


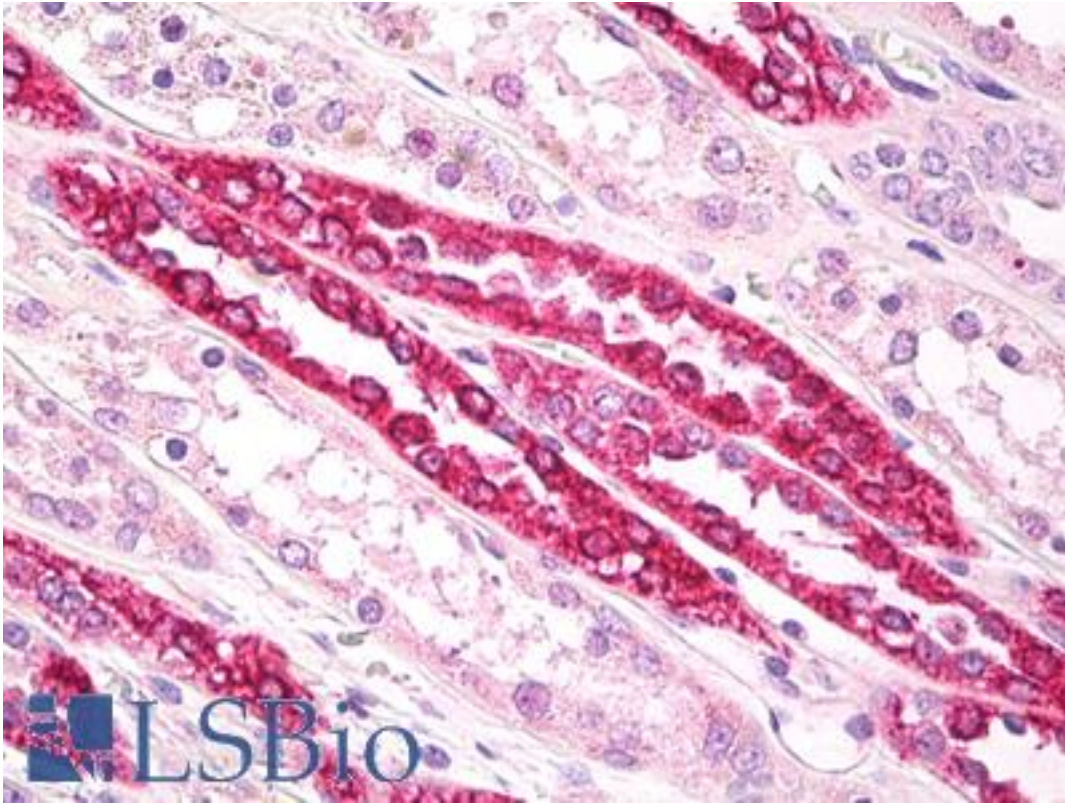
| Beta Tubulin Rabbit anti-Human Polyclonal (aa417-435) Antibody - LS-B7936 - LSBio | |
|---|--|
| CatalogID: | LS-B7936 |
| Validation: | This antibody replaces catalog number LS-C148077. It has been validated for use in the following assays: IHC-P. |
| Target: | Tubulin Beta |
| Host | Tubulin Beta antibody was produced in Rabbit |
| Clonality: | Polyclonal |
| Isotype: | IgG |
| Immunogen Species: | Beta Tubulin antibody was raised against Human |
| Antigen Type: | Synthetic peptide |
| Immunogen: | Beta Tubulin antibody was raised against a synthetic peptide corresponding to amino acids 417-435 (DLVSEYQQYQDATADEQGE) of human β -tubulin was used as immunogen. Percent identity by BLAST analysis: Human, Gorilla, Gibbon, Monkey, Marmoset, Mouse, Rat, Dog, Bat, Bovine, Hamster, Panda, Horse, Rabbit, Pig, Opossum, Chicken, Platypus, Xenopus (100%); Rice, Arabidopsis, Castor bean, Spikemoss, Grape (95%). |
| Specificity: | Human Beta Tubulin |
| Epitope: | aa417-435 |
| Reactivity: | Human, Gorilla, Gibbon, Monkey, Mouse, Rat, Bat, Bovine, Dog, Hamster, Horse, Pig, Rabbit, Chicken, Xenopus |
| Purification: | Protein G purified |
| Presentation: | PBS, 0.05% BSA, 0.05% sodium azide |
| Recommended Storage: | Store at 4°C for short term applications. For long term storage, aliquot and store at -20°C. |
| Uses: | IHC - Paraffin (10 μ g/ml), Western blot (0.1 - 1 μ g/ml) (Optimal dilution to be determined by the researcher) |
| Size: | 50 μ g |
| Concentration: | 0.5 mg/ml |

Immunohistochemistry Image:



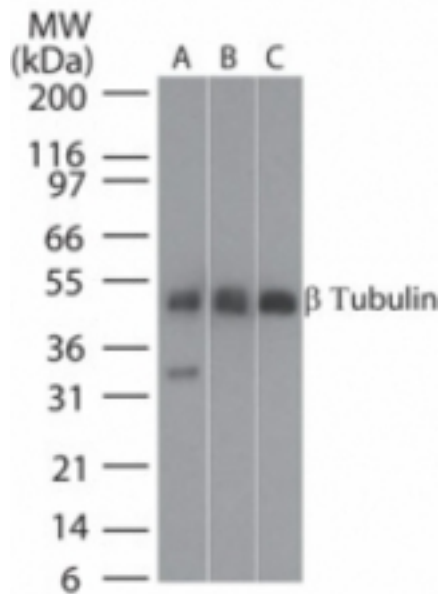
Anti-Beta Tubulin antibody IHC of human kidney, glomeruli. Immunohistochemistry of formalin-fixed, paraffin-embedded tissue after heat-induced antigen retrieval. Antibody LS-B7936 dilution 10 ug/ml.

Immunohistochemistry Image:



Anti-Beta Tubulin antibody IHC of human kidney, tubules. Immunohistochemistry of formalin-fixed, paraffin-embedded tissue after heat-induced antigen retrieval. Antibody LS-B7936 dilution 10 ug/ml.

Western Blot Image:



Western blot of beta tubulin in lysates from 1) human brain, 2) mouse brain, and 3) rat brain.

Requested From:

Japan

Laboratory Reagent For In Vitro Research Use Only

Not for resale without prior written consent from LifeSpan BioSciences, Inc.

Created on 9/24/2014

© 2014 LifeSpan BioSciences