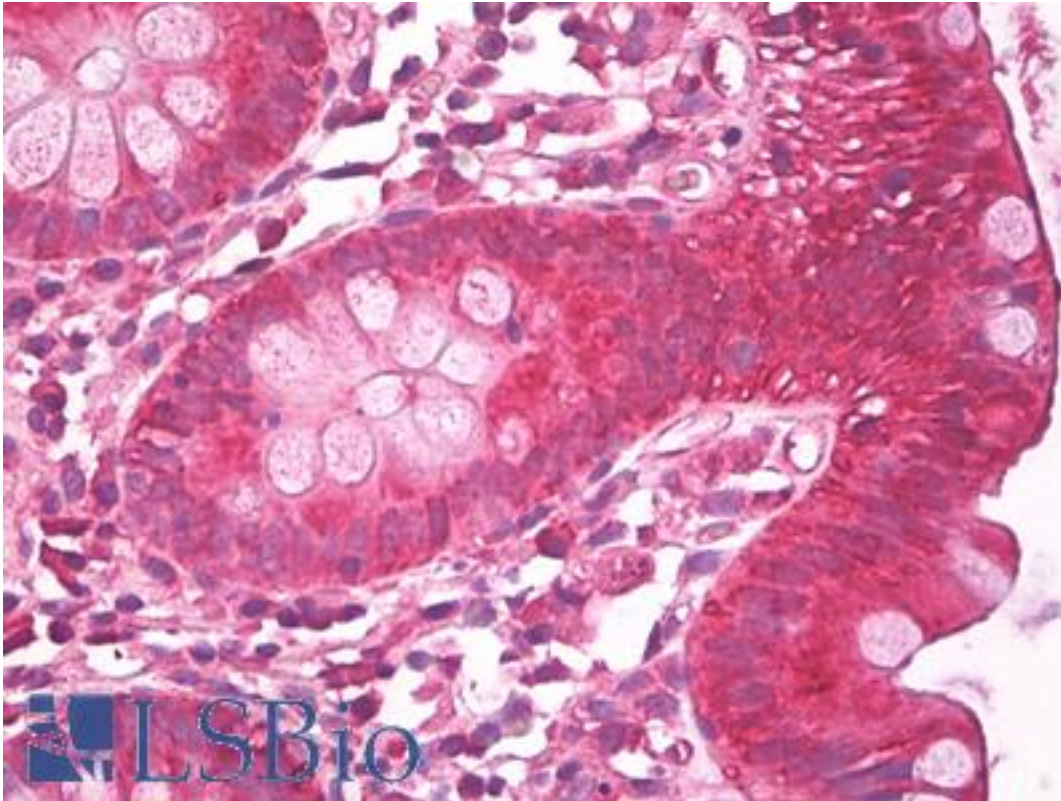


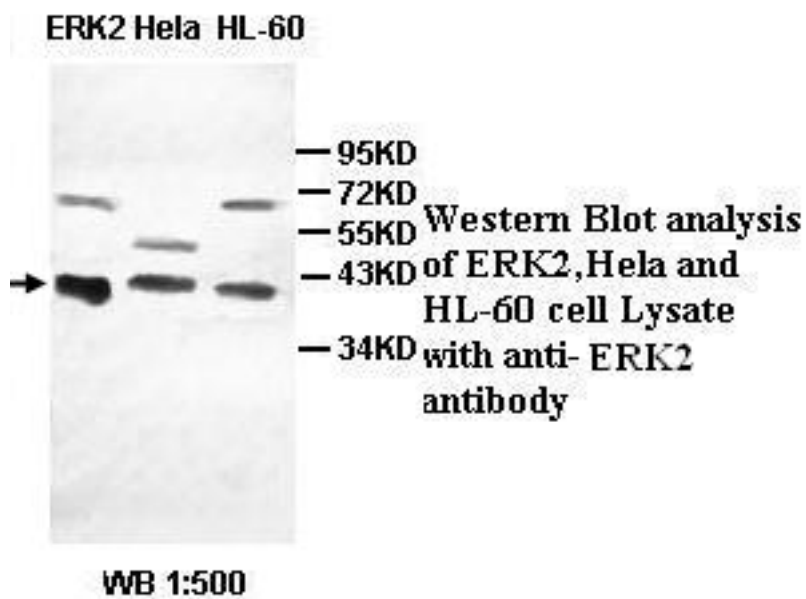
MAPK1 / ERK2 / p42 Rabbit anti-Human Polyclonal Antibody - LS-B7927 - LSBio	
CatalogID:	LS-B7927
Validation:	This antibody replaces catalog number LS-C137241. It has been validated for use in the following assays: IHC-P.
Target:	mitogen-activated protein kinase 1 (MAPK1)
Synonyms:	MAPK1 Antibody, ERK Antibody, ERK-2 Antibody, ERK2 Antibody, MAP kinase 1 Antibody, MAPK 2 Antibody, MAPK2 Antibody, MAP kinase isoform p42 Antibody, MAPK 1 Antibody, p41mapk Antibody, PRKM2 Antibody, MAP kinase 2 Antibody, p41 Antibody, p42-MAPK Antibody, PRKM1 Antibody, ERT1 Antibody, p38 Antibody, p40 Antibody, p42MAPK Antibody, Protein tyrosine kinase ERK2 Antibody
Family / Subfamily:	Protein Kinase / MAPK
Host	MAPK1 antibody was produced in Rabbit
Clonality:	Polyclonal
Isotype:	IgG
Immunogen Species:	MAPK1 / ERK2 / p42 antibody was raised against Human
Antigen Type:	Recombinant protein
Immunogen:	MAPK1 / ERK2 / p42 antibody was raised against recombinant protein
Reactivity:	Human, Mouse, Rat
Purification:	Affinity purified
Presentation:	PBS, pH 7.4, 0.02% sodium azide
Recommended Storage:	Short term 4°C, long term aliquot and store at -20°C, avoid freeze thaw cycles.
Uses:	IHC - Paraffin (5 µg/ml), Western blot (1:1000 - 1:2000) (Optimal dilution to be determined by the researcher)
Size:	50 µl
Concentration:	1 mg/ml

Immunohistochemistry Image:



Anti-MAPK1 / ERK2 antibody IHC of human colon. Immunohistochemistry of formalin-fixed, paraffin-embedded tissue after heat-induced antigen retrieval. Antibody LS-B7927 dilution 5 ug/ml.

Western Blot Image:



Requested From:

Japan

Laboratory Reagent For In Vitro Research Use Only

Not for resale without prior written consent from LifeSpan BioSciences, Inc.

Created on 9/24/2014

© 2014 LifeSpan BioSciences