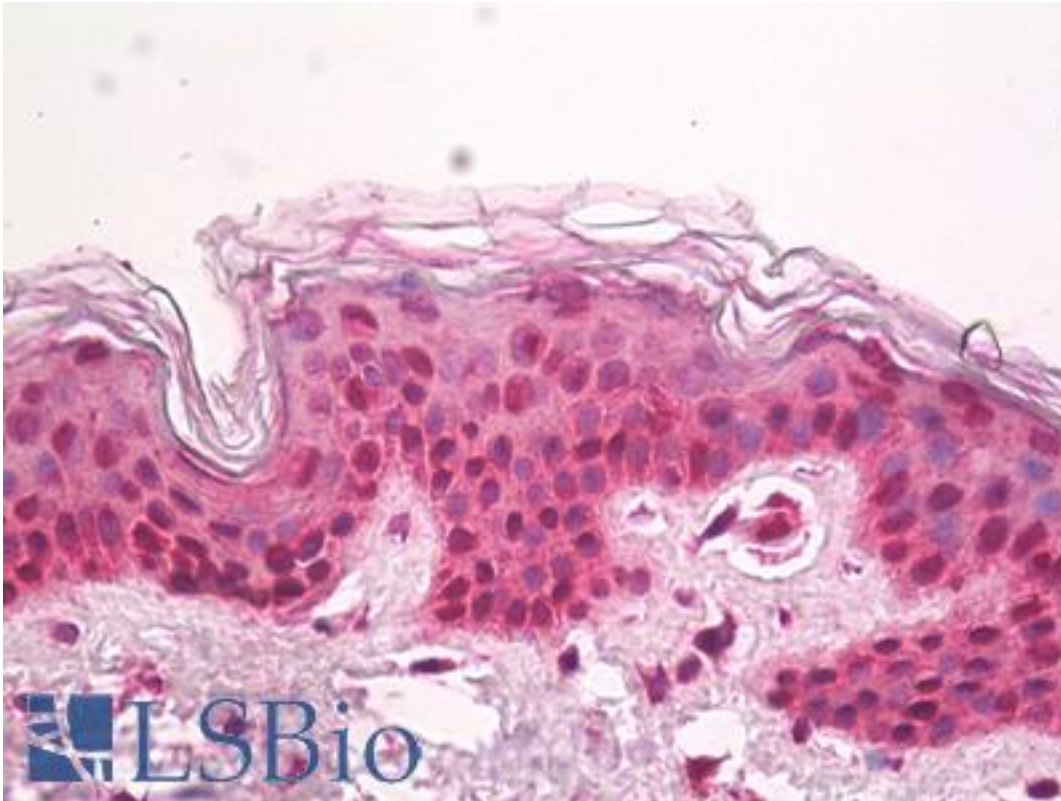


HIRIP3 Rabbit anti-Human Polyclonal Antibody - LS-B7926 - LSBio

CatalogID:	LS-B7926
Validation:	This antibody replaces catalog number LS-C137337. It has been validated for use in the following assays: IHC-P.
Target:	HIRA interacting protein 3 (HIRIP3)
Synonyms:	HIRIP3 Antibody, HIRA-interacting protein 3 Antibody, HIRA interacting protein 3 Antibody
Host	HIRIP3 antibody was produced in Rabbit
Clonality:	Polyclonal
Isotype:	IgG
Immunogen Species:	HIRIP3 antibody was raised against Human
Antigen Type:	Recombinant protein
Immunogen:	HIRIP3 antibody was raised against recombinant protein
Reactivity:	Human
Purification:	Affinity purified
Presentation:	PBS, pH 7.4, 0.02% sodium azide
Recommended Storage:	Short term 4°C, long term aliquot and store at -20°C, avoid freeze thaw cycles.
Uses:	IHC - Paraffin (5 µg/ml), Western blot (1:1000 - 1:2000), ELISA (1:20000 - 1:80000) (Optimal dilution to be determined by the researcher)
Size:	50 µl
Concentration:	1 mg/ml

Immunohistochemistry Image:



Anti-HIRIP3 antibody IHC of human skin. Immunohistochemistry of formalin-fixed, paraffin-embedded tissue after heat-induced antigen retrieval. Antibody LS-B7926 dilution 5 ug/ml.

Requested From:

Japan

Laboratory Reagent For In Vitro Research Use Only

Not for resale without prior written consent from LifeSpan BioSciences, Inc.

Created on 9/24/2014

© 2014 LifeSpan BioSciences