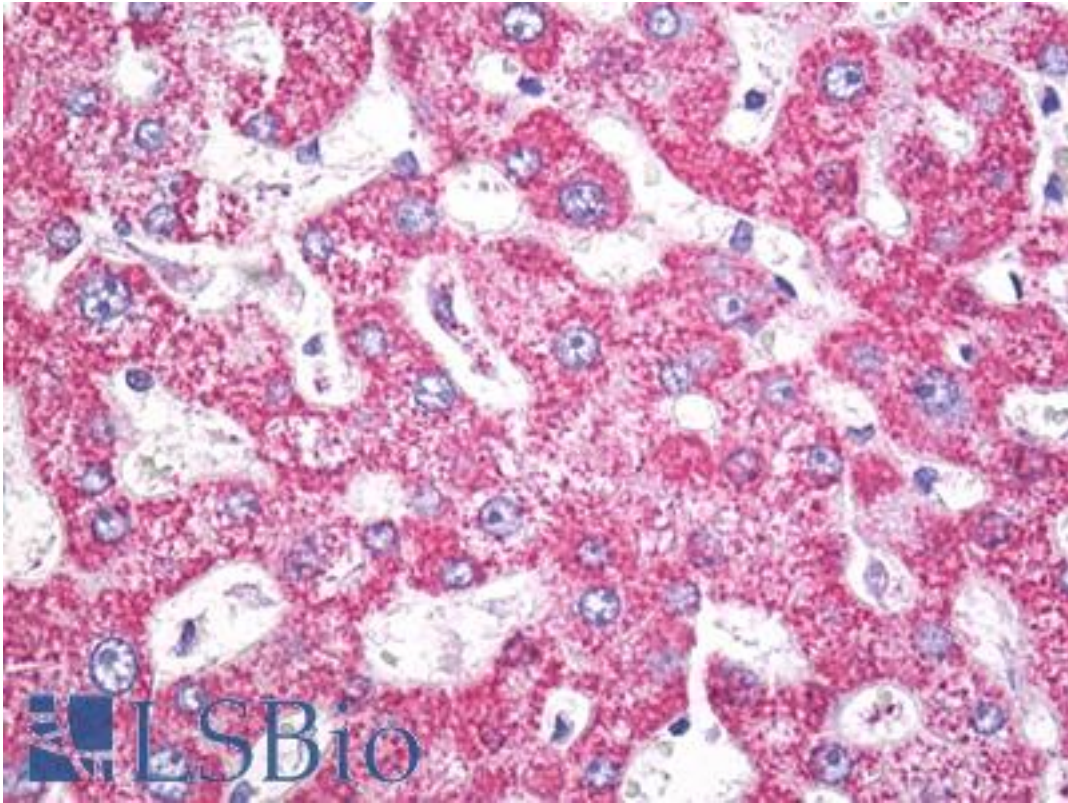


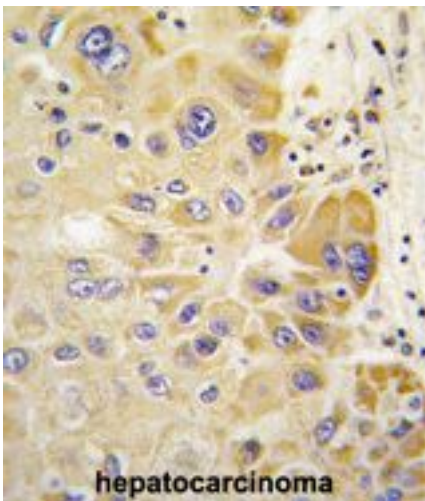
ALDH2 Rabbit anti-Human Polyclonal (Internal) Antibody - LS-B7924 - LSBio	
CatalogID:	LS-B7924
Validation:	This antibody replaces catalog number LS-C98147. It has been validated for use in the following assays: IHC-P.
Target:	aldehyde dehydrogenase 2 family (mitochondrial) (ALDH2)
Synonyms:	ALDH2 Antibody, Acetaldehyde dehydrogenase 2 Antibody, ALDH-E2 Antibody, ALDH class 2 Antibody, ALDHI Antibody, ALDM Antibody, Liver mitochondrial ALDH Antibody
Host	ALDH2 antibody was produced in Rabbit
Clonality:	Polyclonal
Immunogen Species:	ALDH2 antibody was raised against Human
Antigen Type:	Synthetic peptide
Immunogen:	ALDH2 antibody was raised against kLH conjugated synthetic peptide selected from the Center region of human ALDH2.
Epitope:	Internal
Reactivity:	Human
Purification:	Immunoaffinity purified
Presentation:	PBS, 0.09% sodium azide
Recommended Storage:	Maintain refrigerated at 2-8°C for up to 6 months. For long term storage store at -20°C.
Uses:	IHC - Paraffin (10 µg/ml), Western blot (1:1000) (Optimal dilution to be determined by the researcher)
Size:	200 µl

Immunohistochemistry Image:



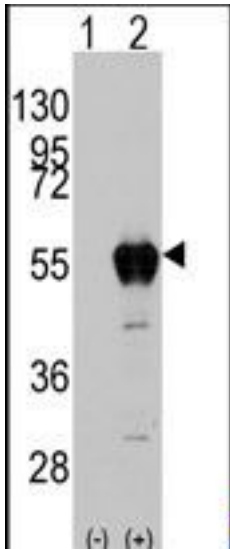
Anti-ALDH2 antibody IHC of human liver. Immunohistochemistry of formalin-fixed, paraffin-embedded tissue after heat-induced antigen retrieval. Antibody LS-B7924 dilution 10 ug/ml.

Immunohistochemistry Image:



Formalin-fixed and paraffin-embedded human hepatocarcinoma tissue reacted with ALDH2 antibody (Center), which was peroxidase-conjugated to the secondary antibody, followed by DAB staining.

Western Blot Image:



Western blot of ALDH2 (arrow) using rabbit polyclonal ALDH2 Antibody (Center). 293 cell lysates (2 ug/lane) either nontransfected (Lane 1) or transiently transfected with the ALDH2 gene (Lane 2).

Requested From:

Japan

Laboratory Reagent For In Vitro Research Use Only

Not for resale without prior written consent from LifeSpan BioSciences, Inc.

Created on 9/24/2014

© 2014 LifeSpan BioSciences