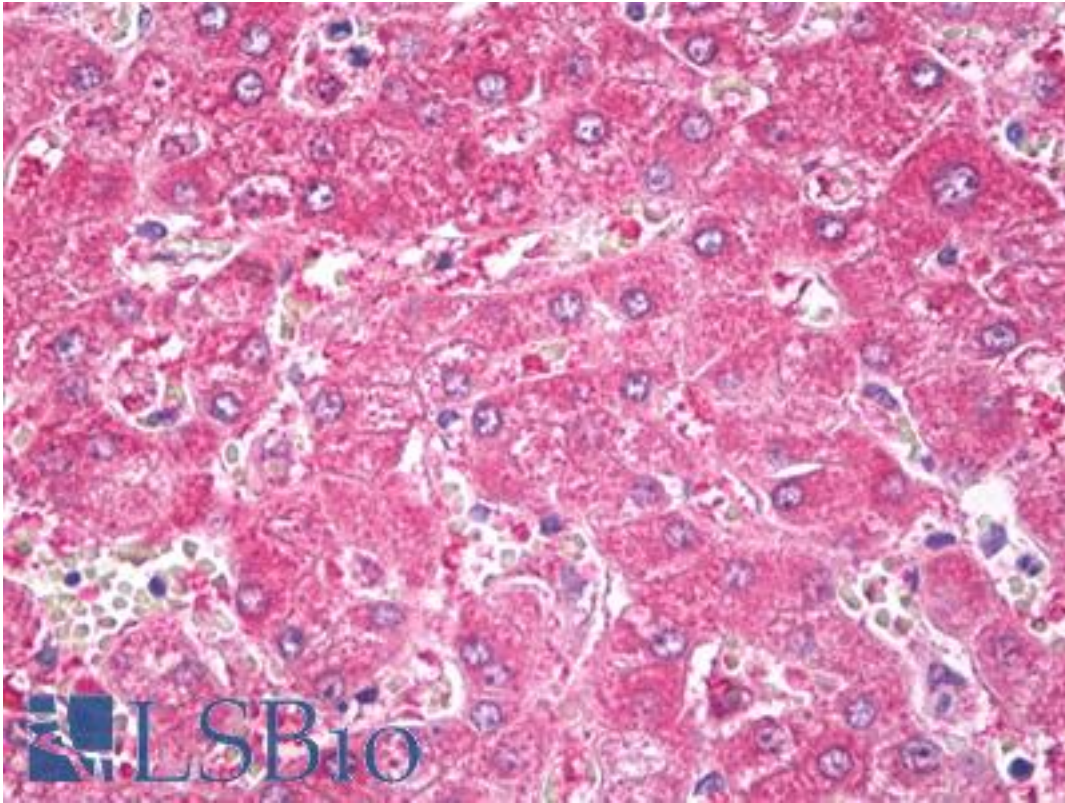


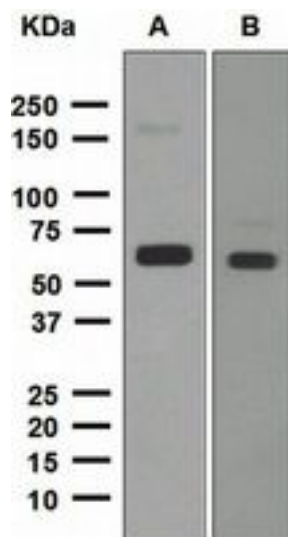
ALDH2 Rabbit anti-Human Monoclonal (Internal) (EPR4493) Antibody - LS-B7921 - LSBio	
<b>CatalogID:</b>	LS-B7921
<b>Validation:</b>	This antibody replaces catalog number LS-C138016. It has been validated for use in the following assays: IHC-P.
<b>Target:</b>	aldehyde dehydrogenase 2 family (mitochondrial) (ALDH2)
<b>Synonyms:</b>	ALDH2 Antibody, Acetaldehyde dehydrogenase 2 Antibody, ALDH-E2 Antibody, ALDH class 2 Antibody, ALDHI Antibody, ALDM Antibody, Liver mitochondrial ALDH Antibody
<b>Host</b>	ALDH2 antibody was produced in Rabbit
<b>Clonality:</b>	Monoclonal
<b>Isotype:</b>	IgG
<b>Clone Name:</b>	EPR4493
<b>Immunogen Species:</b>	ALDH2 antibody was raised against Human
<b>Antigen Type:</b>	Synthetic peptide
<b>Immunogen:</b>	ALDH2 antibody was raised against synthetic peptide
<b>Specificity:</b>	Human ALDH2. Species cross-reactivity is based on WB analysis.
<b>Epitope:</b>	Internal
<b>Reactivity:</b>	Human, Mouse, Rat
<b>Purification:</b>	Tissue culture supernatant
<b>Presentation:</b>	Tris-Glycine-NaCl or PBS, pH 7.2-7.4, 40-50% Glycerol, 0.01% sodium azide, 0.05% BSA
<b>Recommended Storage:</b>	Short term 4°C, long term aliquot and store at -20°C, avoid freeze thaw cycles.
<b>Uses:</b>	IHC - Paraffin (1:50), ICC (1:100 - 1:250), Western blot (1:1000 - 1:10000), Immunoprecipitation (1:10 - 1:100) (Optimal dilution to be determined by the researcher)
<b>Size:</b>	50 µl

**Immunohistochemistry Image:**



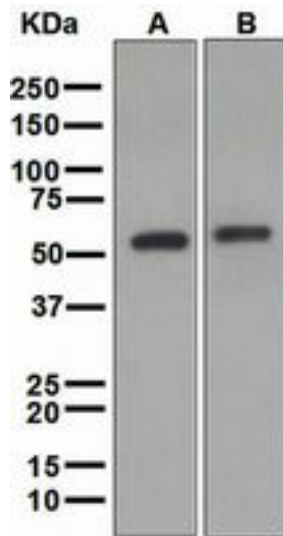
Anti-ALDH2 antibody IHC of human liver. Immunohistochemistry of formalin-fixed, paraffin-embedded tissue after heat-induced antigen retrieval. Antibody LS-B7921 dilution 1:50.

**Western Blot Image:**



Western blot analysis on (A) HepG2 and (B) A549 cell lysates using anti-Aldh2 antibody.

**Western Blot Image:**



Western blot analysis on (A) mouse liver and (B) rat liver lysates using anti-Aldh2 antibody.

**Requested From:**

Japan

Laboratory Reagent For In Vitro Research Use Only

Not for resale without prior written consent from LifeSpan BioSciences, Inc.

Created on 9/24/2014

© 2014 LifeSpan BioSciences