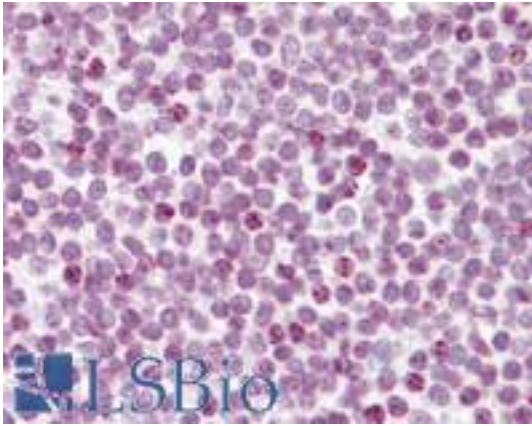


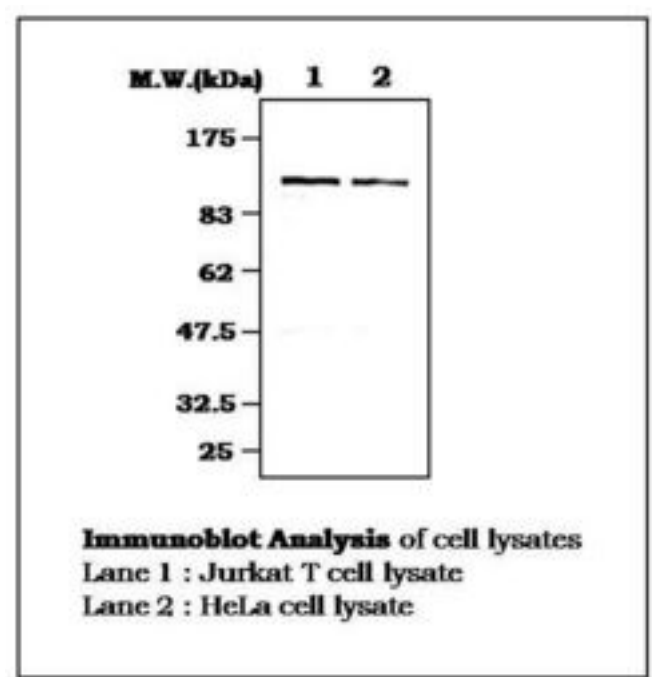
RBL2 / RB2 p130 Rabbit anti-Human Polyclonal (aa175-189) Antibody - LS-B7909 - LSBio	
CatalogID:	LS-B7909
Validation:	This antibody replaces catalog number LS-C62281. It has been validated for use in the following assays: IHC-P.
Target:	retinoblastoma-like 2 (p130) (RBL2)
Synonyms:	RBL2 Antibody, p130 Antibody, Retinoblastoma-like 2 (p130) Antibody, RBR-2 Antibody, Rb2 Antibody, Retinoblastoma-like protein 2 Antibody
Host	RBL2 antibody was produced in Rabbit
Clonality:	Polyclonal
Isotype:	IgG
Immunogen Species:	RBL2 / RB2 p130 antibody was raised against Human
Antigen Type:	Synthetic peptide
Immunogen:	RBL2 / RB2 p130 antibody was raised against synthetic peptide (175-189 a.a.).
Epitope:	aa175-189
Reactivity:	Human
Purification:	Purified
Presentation:	HEPES with 0.15M NaCl, 0.01% BSA, 0.03% sodium azide, and 50% glycerol
Recommended Storage:	Long term: -20°C; Short term: -20°C
Uses:	IHC - Paraffin (1:200), Western blot (1:2000) (Optimal dilution to be determined by the researcher)
Size:	50 µl

Immunohistochemistry Image:



Anti-RB2 antibody IHC of human tonsil. Immunohistochemistry of formalin-fixed, paraffin-embedded tissue after heat-induced antigen retrieval. Antibody LS-B7909 dilution 1:200.

Western Blot Image:



Requested From:

Japan

Laboratory Reagent For In Vitro Research Use Only

Not for resale without prior written consent from LifeSpan BioSciences, Inc.

Created on 9/24/2014

© 2014 LifeSpan BioSciences