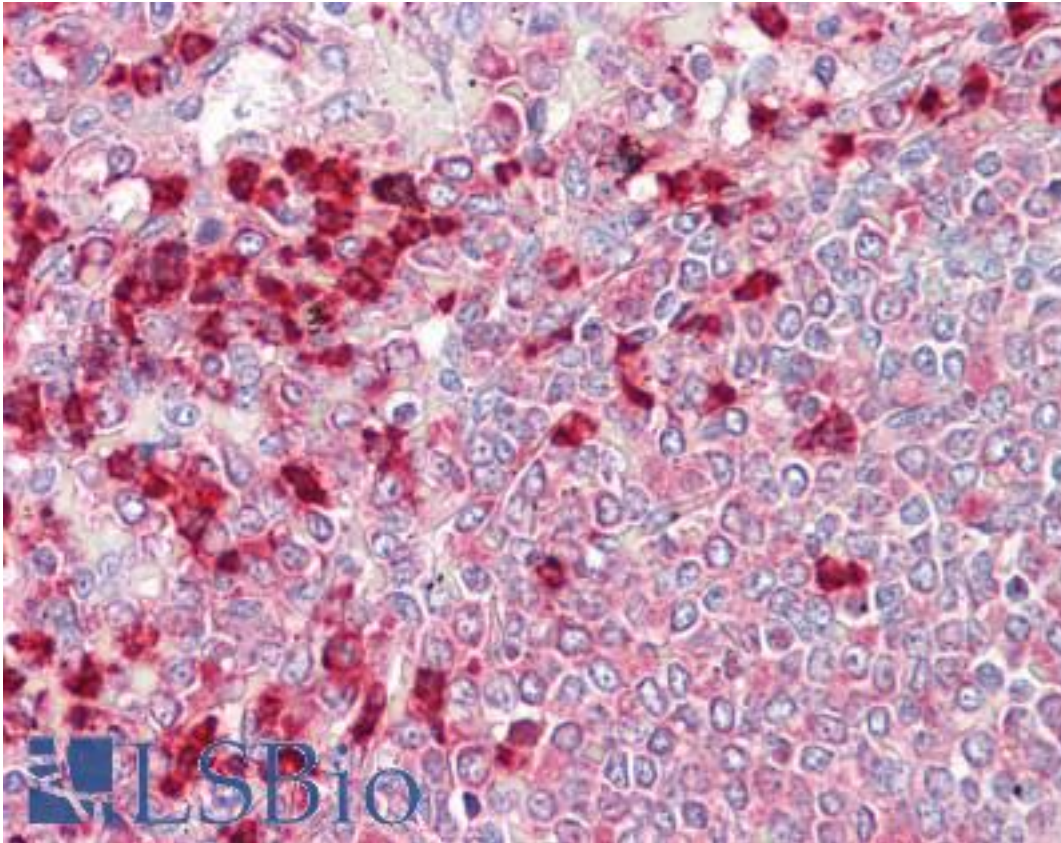


**LF / LTF / Lactoferrin Rabbit anti-Human Polyclonal Antibody - LS-B7905 - LSBio**

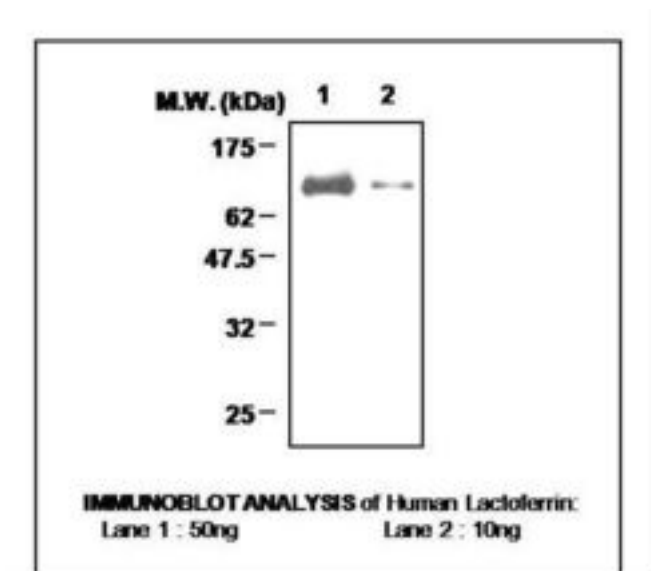
<b>CatalogID:</b>	LS-B7905
<b>Validation:</b>	This antibody replaces catalog number LS-C62109. It has been validated for use in the following assays: IHC-P.
<b>Target:</b>	lactotransferrin (LTF)
<b>Synonyms:</b>	LTF Antibody, GIG12 Antibody, Growth-inhibiting protein 12 Antibody, HLF2 Antibody, Lactotransferrin Antibody, Lactoferrin Antibody, LF Antibody, Neutrophil lactoferrin Antibody, Talalactoferrin Antibody
<b>Host</b>	LTF antibody was produced in Rabbit
<b>Clonality:</b>	Polyclonal
<b>Isotype:</b>	IgG
<b>Immunogen Species:</b>	LF / LTF / Lactoferrin antibody was raised against Human
<b>Immunogen:</b>	LF / LTF / Lactoferrin antibody was raised against recombinant human LTF / Lactoferrin purified from E. coli.
<b>Reactivity:</b>	Human
<b>Purification:</b>	Purified
<b>Presentation:</b>	HEPES with 0.15M NaCl, 0.01% BSA, 0.03% sodium azide, and 50% glycerol
<b>Recommended Storage:</b>	Long term: -20°C; Short term: -20°C
<b>Uses:</b>	IHC - Paraffin (1:200), Western blot (1:2000) (Optimal dilution to be determined by the researcher)
<b>Size:</b>	50 µl
<b>Concentration:</b>	1 mg/ml

**Immunohistochemistry Image:**



Anti-LF / Lactoferrin antibody IHC of human spleen. Immunohistochemistry of formalin-fixed, paraffin-embedded tissue after heat-induced antigen retrieval. Antibody LS-B7905 dilution 1:200.

**Western Blot Image:**



Requested From:

Japan

Laboratory Reagent For In Vitro Research Use Only

Not for resale without prior written consent from LifeSpan BioSciences, Inc.

Created on 9/24/2014

© 2014 LifeSpan BioSciences