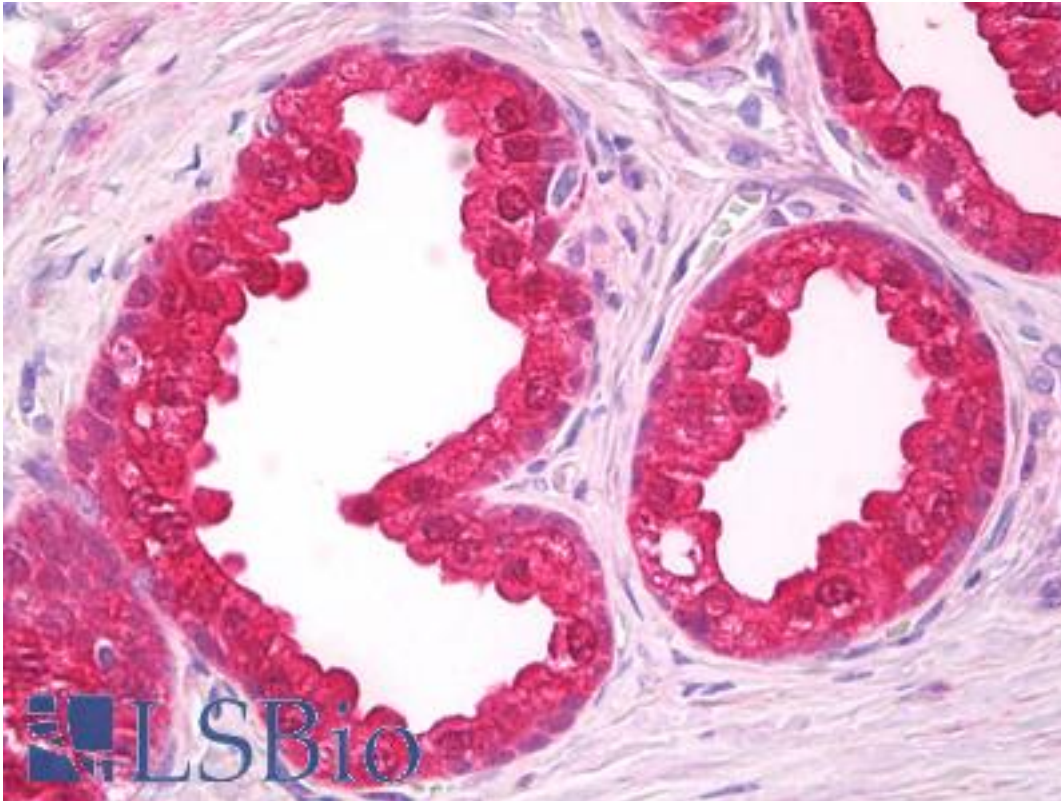


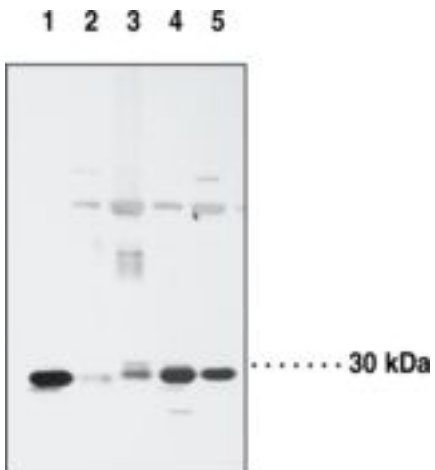
NOL3 / ARC Rabbit anti-Human Polyclonal Antibody - LS-B7900 - LSBio	
<b>CatalogID:</b>	LS-B7900
<b>Validation:</b>	This antibody replaces catalog number LS-C150712. It has been validated for use in the following assays: IHC-P.
<b>Target:</b>	nucleolar protein 3 (apoptosis repressor with CARD domain) (NOL3)
<b>Synonyms:</b>	NOL3 Antibody, Apoptosis repressor with CARD Antibody, CARD2 Antibody, FCM Antibody, NOP Antibody, Nucleolar protein 3 Antibody, Nucleolar protein of 30 kDa Antibody, MYP Antibody, NOP30 Antibody
<b>Family / Subfamily:</b>	Apoptosis / not assigned-Apoptosis
<b>Host</b>	NOL3 antibody was produced in Rabbit
<b>Clonality:</b>	Polyclonal
<b>Isotype:</b>	IgG
<b>Immunogen Species:</b>	NOL3 / ARC antibody was raised against Human
<b>Immunogen:</b>	NOL3 / ARC antibody was raised against human ARC amino acids 191-208 (PDPEPEPDFEERDESEDS)
<b>Specificity:</b>	A whole cell lysate from HeLa cells can be used as a positive control and a 25kDa band should be detected.
<b>Reactivity:</b>	Human, Mouse
<b>Purification:</b>	Affinity purified
<b>Presentation:</b>	PBS containing 0.02% sodium azide
<b>Recommended Storage:</b>	Store at 4°C, stable for one year.
<b>Uses:</b>	IHC - Paraffin (5 µg/ml), Western blot (1:500), Immunoprecipitation (Optimal dilution to be determined by the researcher)
<b>Size:</b>	1 ea

**Immunohistochemistry Image:**



Anti-NOL3 antibody IHC of human prostate. Immunohistochemistry of formalin-fixed, paraffin-embedded tissue after heat-induced antigen retrieval. Antibody LS-B7900 dilution 5 ug/ml.

**Western Blot Image:**



Lane 1: Mouse cerebrum  
Lane 2: Mouse liver  
Lane 3: Mouse heart  
Lane 4: Mouse smooth muscle  
Lane 5: Mouse lung

Western blot of NOL3 antibody LS-B7900.

Requested From:

Japan

Laboratory Reagent For In Vitro Research Use Only

Not for resale without prior written consent from LifeSpan BioSciences, Inc.

Created on 9/24/2014

© 2014 LifeSpan BioSciences