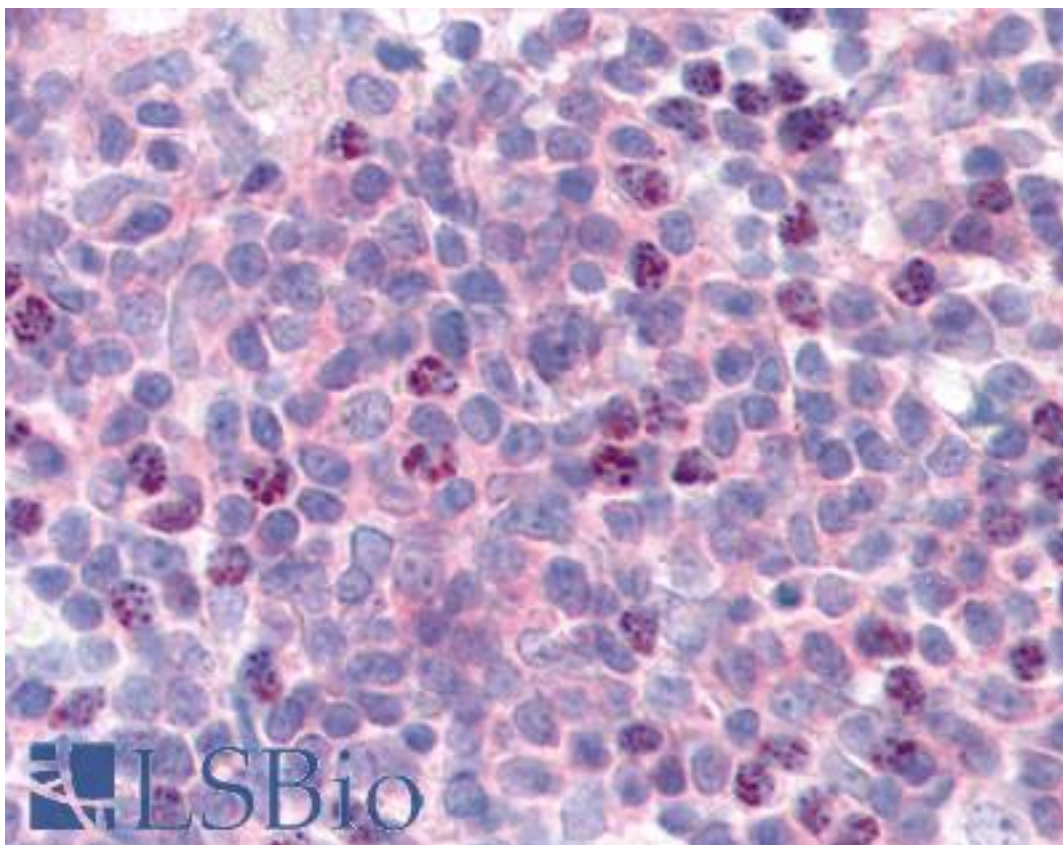


CCNL1 / Cyclin L1 Rabbit anti-Human Polyclonal (aa314-369) Antibody - LS-B79 - LSBio

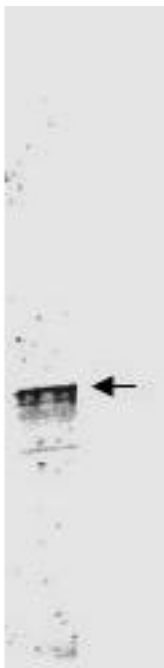
CatalogID:	LS-B79
Validation:	This antibody replaces catalog number LS-C19080. It has been validated for use in the following assays: IHC.
Target:	cyclin L1 (CCNL1)
Synonyms:	CCNL1 Antibody, ANIA6A Antibody, Ania-6a Antibody, BM-001 Antibody, Cyclin L ania-6a Antibody, Cyclin L gamma Antibody, Cyclin L1 Antibody, Cyclin-L Antibody, Cyclin-L1 Antibody, PRO1073 Antibody
Host	CCNL1 antibody was produced in Rabbit
Clonality:	Polyclonal
Immunogen Species:	CCNL1 / Cyclin L1 antibody was raised against Human
Antigen Type:	Synthetic peptide
Immunogen:	CCNL1 / Cyclin L1 antibody was raised against synthetic polypeptide corresponding to amino acids 314-369 of Human Cyclin L1a protein.
Specificity:	Human Cyclin L1a
Epitope:	aa314-369
Reactivity:	Human
Purification:	Protein A purified
Reconstitution:	Possible additional volumes for resuspension: 50 µl
Presentation:	0.02 M potassium phosphate, 0.15 M sodium chloride, pH 7.2, 0.01% sodium azide
Recommended Storage:	Store at -20°C. Aliquot to avoid freeze/thaw cycles.
Usage Summary:	Immunohistochemistry: LS-B79 was validated for use in immunohistochemistry on a panel of 21 formalin-fixed, paraffin-embedded (FFPE) human tissues after heat induced antigen retrieval in pH 6.0 citrate buffer. After incubation with the primary antibody, slides were incubated with biotinylated secondary antibody, followed by alkaline phosphatase-streptavidin and chromogen. The stained slides were evaluated by a pathologist to confirm staining specificity. The optimal working concentration for LS-B79 was determined to be 10-20 ug/ml.
Uses:	IHC - Paraffin (10 - 20 µg/ml), Western blot (1:2000 - 1:5000), Immunoprecipitation, ELISA (1:5000 - 1:25000) (Optimal dilution to be determined by the researcher)
Size:	50 µg
Concentration:	1 mg/ml (after resuspension)

Immunohistochemistry Image:



Anti-CCNL1 / Cyclin L1 antibody IHC of human thymus. Immunohistochemistry of formalin-fixed, paraffin-embedded tissue after heat-induced antigen retrieval. Antibody LS-B79 concentration 20 ug/ml.

Western Blot Image:



Western blot of Protein A Purified anti-Cyclin L1a antibody shows detection of a band ~59 kDa corresponding to a Cyclin L1a (arrowhead) present in mouse brain whole cell lysate. Approximately 35g of lysate was separated by 4-20% SDS-PAGE followed by transfer to nitrocellulose. After blocking the membrane was probed with the primary antibody diluted to 1:3,500 for 2h at room temperature followed by washes and reaction with a 1:10000 dilution of IRDye800 conjugated Gt-a-Rabbit IgG [H&L] MX (611-132-122) for 45 min at room temperature. IRDye800 fluorescence image was captured using the Odyssey Infrared Imaging System developed by LI-COR. IRDye is a trademark of LI-COR, Inc. Other detection systems will yield similar results.

Requested From:

Japan

Laboratory Reagent For In Vitro Research Use Only

Not for resale without prior written consent from LifeSpan BioSciences, Inc.

Created on 9/24/2014

© 2014 LifeSpan BioSciences