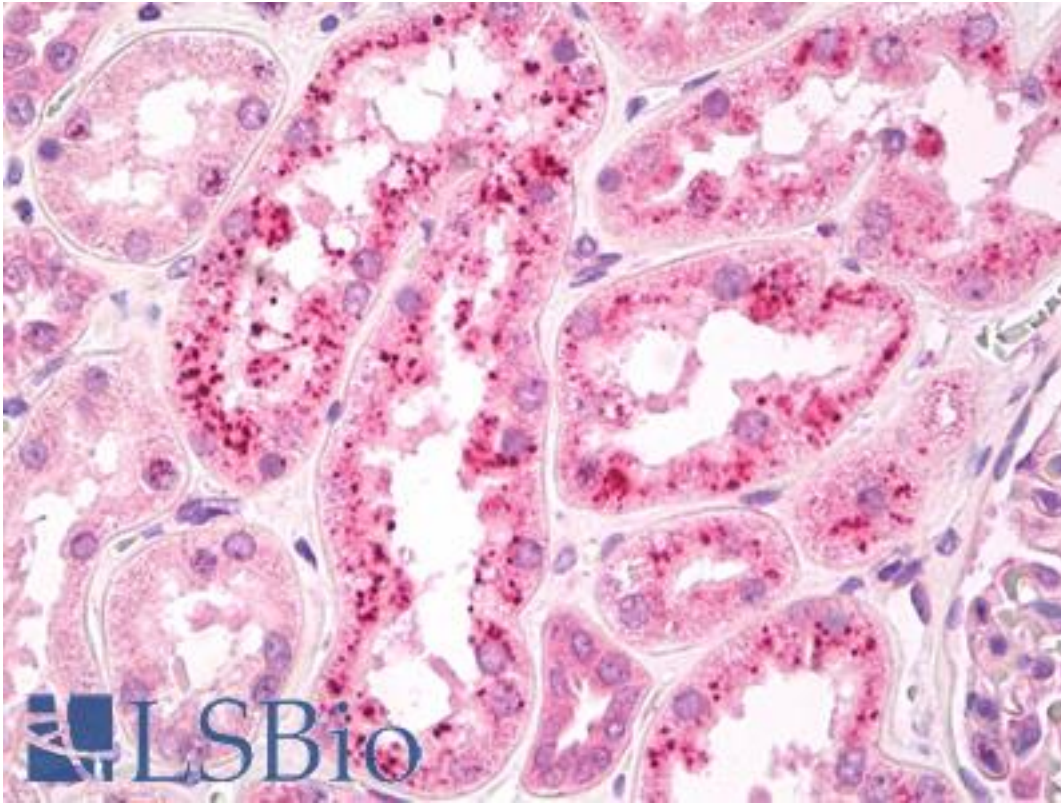


RBP / RBP4 Rabbit anti-Human Polyclonal Antibody - LS-B7898 - LSBio

CatalogID:	LS-B7898
Validation:	This antibody replaces catalog number LS-C146691. It has been validated for use in the following assays: IHC-P.
Target:	retinol binding protein 4, plasma (RBP4)
Synonyms:	RBP4 Antibody, PRBP Antibody, Plasma retinol-binding protein Antibody, RBP Antibody, Retinol-binding protein 4 Antibody
Host	RBP4 antibody was produced in Rabbit
Clonality:	Polyclonal
Isotype:	IgG
Immunogen Species:	RBP / RBP4 antibody was raised against Human
Immunogen:	RBP / RBP4 antibody was raised against human sRBP4 amino acids 28-37 (RVKENFDKAR). Percent identity by BLAST analysis: Human, Chimpanzee, Gorilla, Gibbon, Marmoset, Mouse, Rat, Bat, Bovine, Hamster, Horse, Rabbit, Pig (100%); Elephant, Opossum (90%); Dog, Turkey, Chicken, Poplar, Bloom alga, Paracoccidioides (80%).
Reactivity:	Human, Chimpanzee, Gorilla, Gibbon, Monkey, Mouse, Rat, Bat, Bovine, Hamster, Horse, Pig, Rabbit
Purification:	Affinity purified
Presentation:	TBS, pH 7.4, containing 50% glycerol, 0.5 mg/ml BSA, and 0.02% sodium azide
Recommended Storage:	Short term 4°C, long term aliquot and store at -20°C, avoid freeze thaw cycles.
Uses:	IHC - Paraffin (5 µg/ml), Western blot (1:200) (Optimal dilution to be determined by the researcher)
Size:	100 µl

Immunohistochemistry Image:



Anti-RBP / RBP4 antibody IHC of human kidney. Immunohistochemistry of formalin-fixed, paraffin-embedded tissue after heat-induced antigen retrieval. Antibody LS-B7898 dilution 5 ug/ml.

Western Blot Image:



Lane 1: Recombinant sRBP4 (6X His-tagged) (0.075 µg)
Lane 2: Recombinant sRBP4 (6X His-tagged) (0.150 µg)
Lane 3: Human Plasma (-Albumin) (12 µg)
Lane 4: Human Plasma (50 µg)

Western blot of RBP / RBP4 antibody LS-B7898.

Requested From:	Japan
Laboratory Reagent For In Vitro Research Use Only	
Not for resale without prior written consent from LifeSpan BioSciences, Inc.	
Created on 9/24/2014	
© 2014 LifeSpan BioSciences	