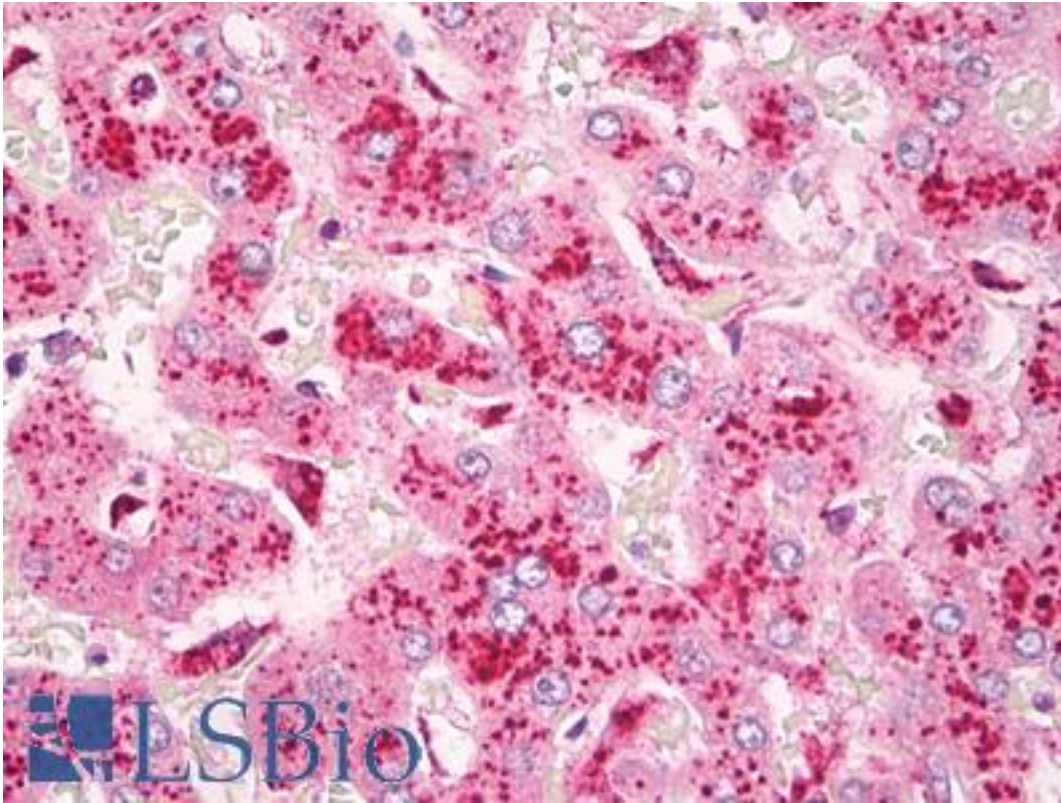


CYSLT2 / CYSLTR2 Rabbit anti-Human Polyclonal Antibody - LS-B7897 - LSBio

CatalogID:	LS-B7897
Validation:	This antibody replaces catalog number LS-C146667. It has been validated for use in the following assays: IHC-P.
Target:	cysteinyl leukotriene receptor 2 (CYSLTR2)
Synonyms:	CYSLTR2 Antibody, CysLT(2) Antibody, CYSLT2 Antibody, CYSLT2R Antibody, CysLT-2 Antibody, HG57 Antibody, HGPCR21 Antibody, KPG_011 Antibody, PSEC0146 Antibody, HPN321 Antibody
Family / Subfamily:	GPCR / Chemoattractant
Host	CYSLTR2 antibody was produced in Rabbit
Clonality:	Polyclonal
Isotype:	IgG
Immunogen Species:	CYSLT2 / CYSLTR2 antibody was raised against Human
Immunogen:	CYSLT2 / CYSLTR2 antibody was raised against human CysLT2 receptor N-terminal amino acids 1-18 (MERKFMSLQPSISVSEME)
Reactivity:	Human
Predicted Reactivity:	Gorilla, Monkey
Purification:	Affinity purified
Presentation:	TBS pH 7.4, containing 50% glycerol, 0.5 mg/ml BSA, and 0.02% sodium azide
Recommended Storage:	Short term 4°C, long term aliquot and store at -20°C, avoid freeze thaw cycles.
Uses:	IHC - Paraffin (5 µg/ml), ICC, Western blot (1:250), Flow Cytometry (1:1000) (Optimal dilution to be determined by the researcher)
Size:	100 µl

Immunohistochemistry Image:



Anti-CYSLT2 / CYSLTR2 antibody IHC of human liver, Kupffer cells. Immunohistochemistry of formalin-fixed, paraffin-embedded tissue after heat-induced antigen retrieval. Antibody LS-B7897 dilution 5 ug/ml.

Requested From:

Japan

Laboratory Reagent For In Vitro Research Use Only

Not for resale without prior written consent from LifeSpan BioSciences, Inc.

Created on 9/24/2014

© 2014 LifeSpan BioSciences