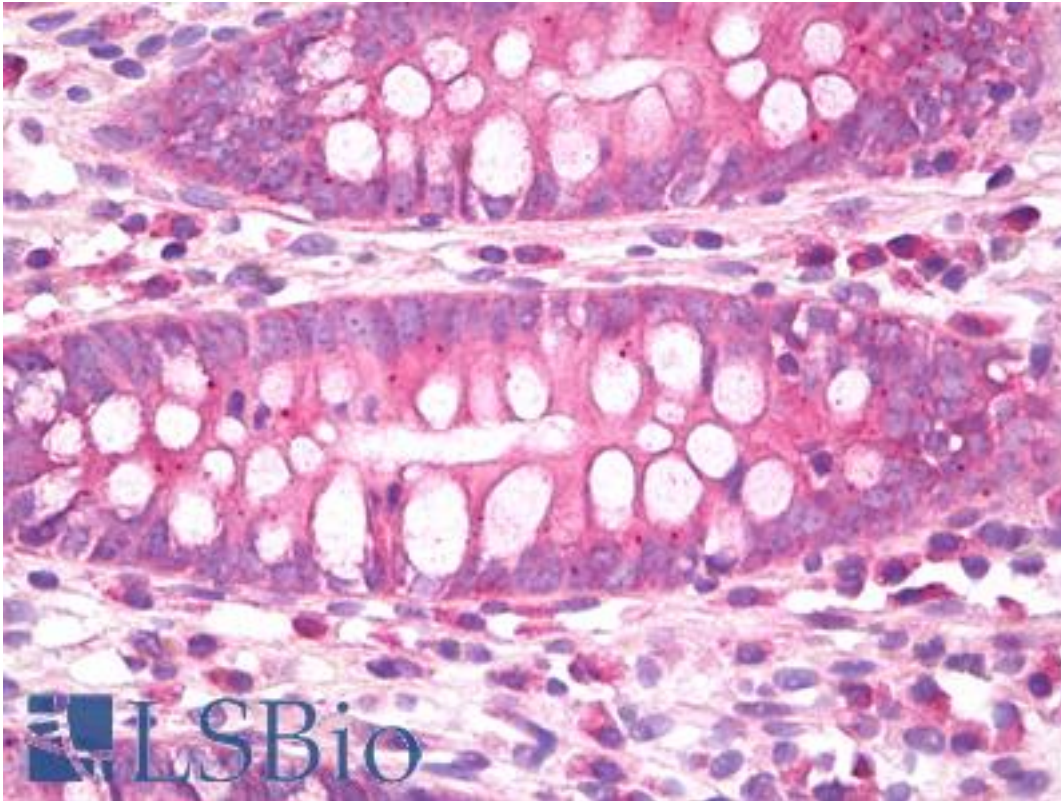


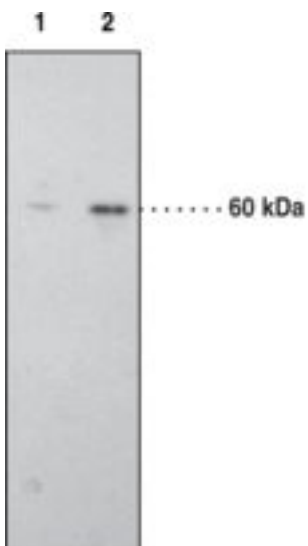
CNR1 / CB1 Rabbit anti-Human Polyclonal Antibody - LS-B7895 - LSBio	
CatalogID:	LS-B7895
Validation:	This antibody replaces catalog number LS-C146655. It has been validated for use in the following assays: IHC-P.
Target:	cannabinoid receptor 1 (brain) (CNR1)
Synonyms:	CNR1 Antibody, CB-R Antibody, CB1 receptor Antibody, CB1A Antibody, CB1R Antibody, Cannabinoid receptor 1 Antibody, Cannabinoid receptor CB1 Antibody, Cannabinoid Receptor I Antibody, CB1 Antibody, CB1K5 Antibody, CANN6 Antibody, Cannabinoid receptor 1 (brain) Antibody, CNR Antibody, Cannabinoid CB(1) receptor Antibody, CB1 cannabinoid receptor Antibody, Central cannabinoid receptor Antibody
Family / Subfamily:	GPCR / Cannabinoid
Host	CNR1 antibody was produced in Rabbit
Clonality:	Polyclonal
Isotype:	IgG
Immunogen Species:	CNR1 / CB1 antibody was raised against Human
Immunogen:	CNR1 / CB1 antibody was raised against human, rat, and mouse CB1 receptor sequence amino acids 1-14 (MKSILDGLADTTFR). Percent identity by BLAST analysis: Human, Chimpanzee, Gorilla, Monkey, Marmoset, Mouse, Rat, Dog, Bat, Bovine, Cat, Hamster, Panda, Horse, Pig, Turkey, Zebra finch, Chicken, Platypus, Xenopus (100%); Opossum, Lizard (93%); Pufferfish, Stickleback (86%).
Reactivity:	Human, Chimpanzee, Gorilla, Monkey, Mouse, Rat, Bat, Bovine, Dog, Hamster, Horse, Pig, Chicken, Xenopus
Purification:	Affinity purified
Presentation:	TBS containing 50% glycerol and 0.02% sodium azide
Recommended Storage:	Short term 4°C, long term aliquot and store at -20°C, avoid freeze thaw cycles.
Uses:	IHC - Paraffin (10 µg/ml), Western blot (Optimal dilution to be determined by the researcher)
Size:	100 µl

Immunohistochemistry Image:



Anti-CB1 antibody IHC of human colon. Immunohistochemistry of formalin-fixed, paraffin-embedded tissue after heat-induced antigen retrieval. Antibody LS-B7895 dilution 10 ug/ml.

Western Blot Image:



Lane 1: Rat brain homogenate (50 µg)

Lane 2: Rat brain homogenate (100 µg)

Western blot of CB1 antibody LS-B7895.

Requested From:

Japan

Laboratory Reagent For In Vitro Research Use Only

Not for resale without prior written consent from LifeSpan BioSciences, Inc.

Created on 9/24/2014

© 2014 LifeSpan BioSciences