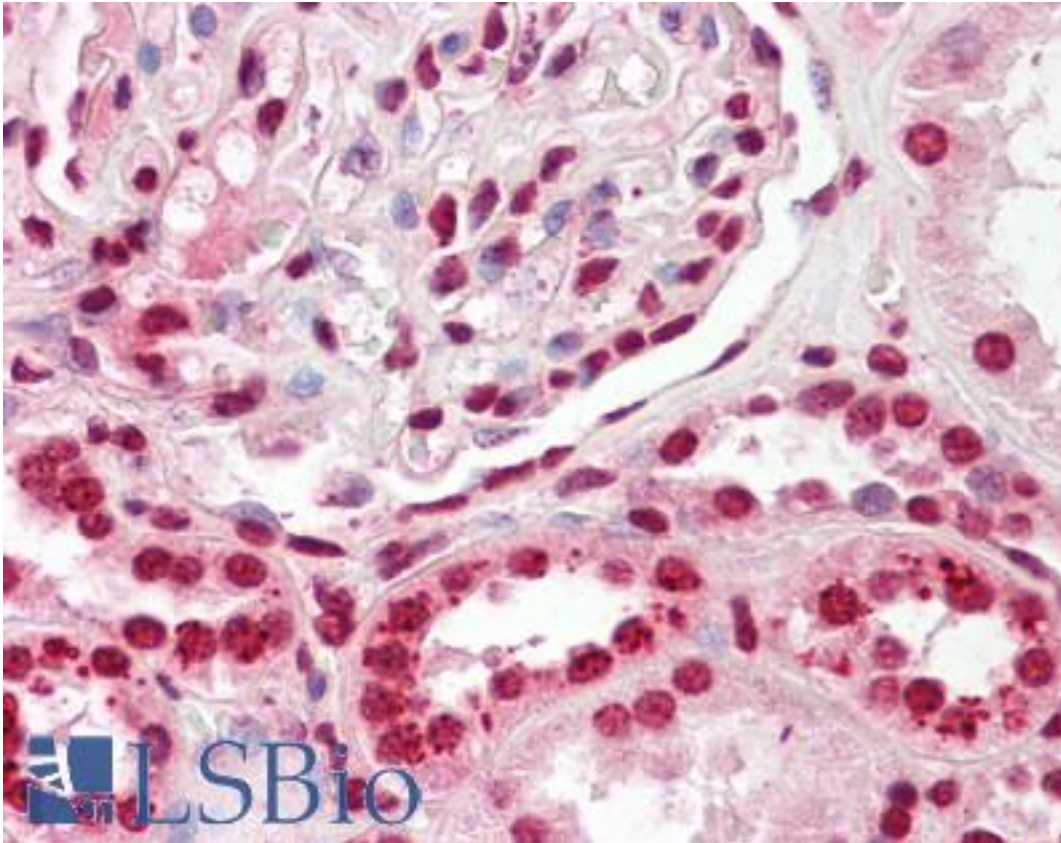


DFF40 / DFFB Rabbit anti-Human Polyclonal Antibody - LS-B7893 - LSBio

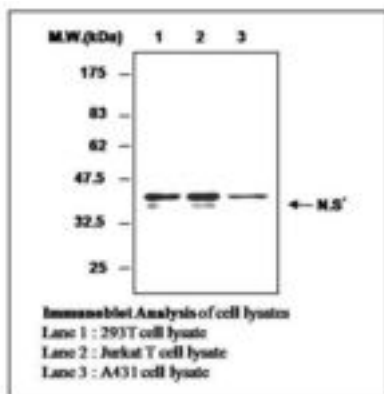
CatalogID:	LS-B7893
Validation:	This antibody replaces catalog number LS-C62221. It has been validated for use in the following assays: IHC-P.
Target:	DNA fragmentation factor, 40kDa, beta polypeptide (caspase-activated DNase) (DFFB)
Synonyms:	DFFB Antibody, Caspase-activated nuclease Antibody, DFF-40 Antibody, DFF40 Antibody, Caspase-activated DNase Antibody, CPAN Antibody, DFF2 Antibody
Family / Subfamily:	DNase
Host	DFFB antibody was produced in Rabbit
Clonality:	Polyclonal
Isotype:	IgG
Immunogen Species:	DFF40 / DFFB antibody was raised against Human
Antigen Type:	Synthetic peptide
Immunogen:	DFF40 / DFFB antibody was raised against synthetic peptide from human DFFB.
Reactivity:	Human
Purification:	Purified
Presentation:	HEPES with 0.15M NaCl, 0.01% BSA, 0.03% sodium azide, and 50% glycerol
Recommended Storage:	Long term: -20°C; Short term: -20°C
Uses:	IHC - Paraffin (1:200), Western blot (1:2000) (Optimal dilution to be determined by the researcher)
Size:	50 µl

Immunohistochemistry Image:



Anti-DFF40 / DFFB antibody IHC of human kidney. Immunohistochemistry of formalin-fixed, paraffin-embedded tissue after heat-induced antigen retrieval. Antibody LS-B7893 dilution 1:200.

Western Blot Image:



Background Reference :

- 1) Nagata S *Annu Rev Immunol.* 2005; vol.23: pp.853-75.
- 2) Nagata S et al, *Cell Death Differ.* 2003; vol.10(1): pp.108-16.
- 3) Wiedlik P *Acta Biochim Pol.* 2000; vol.47(4): pp.1037-44.
- 4) Degen WG et al, *Cell Death Differ.* 2000; vol.7(7): pp.616-27.

Requested From:	Japan
Laboratory Reagent For In Vitro Research Use Only	
Not for resale without prior written consent from LifeSpan BioSciences, Inc.	
Created on 9/24/2014	
© 2014 LifeSpan BioSciences	