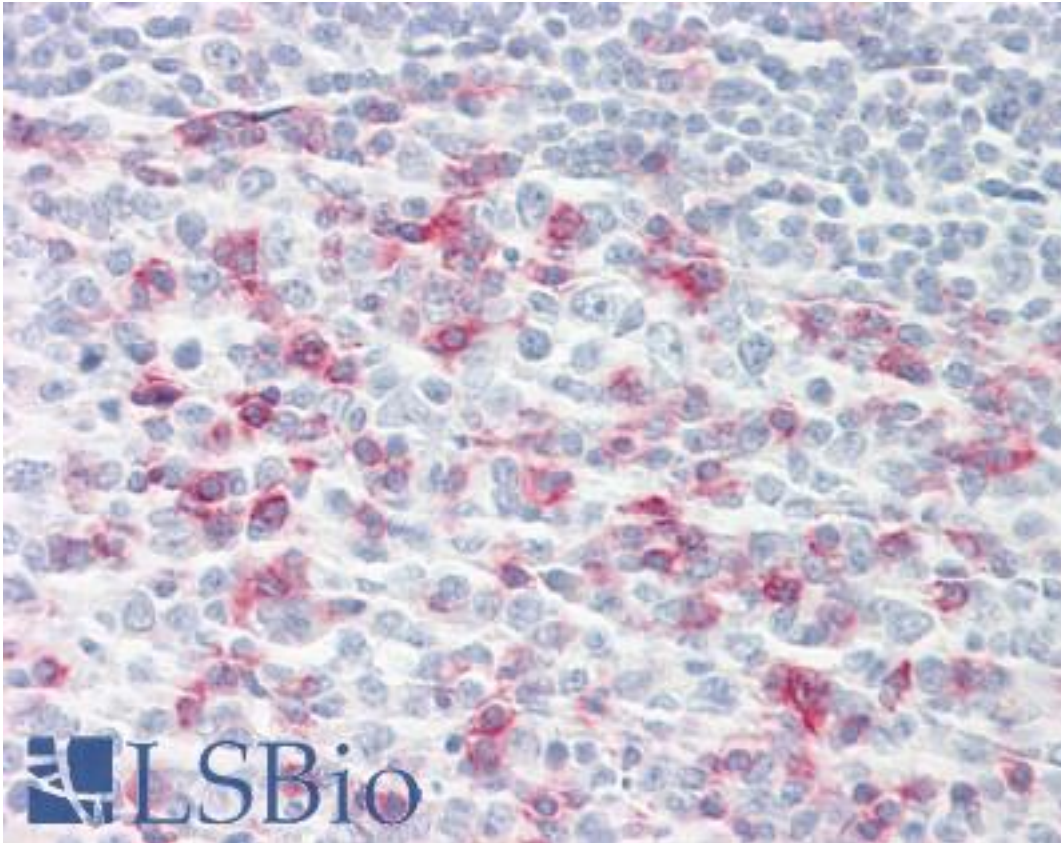


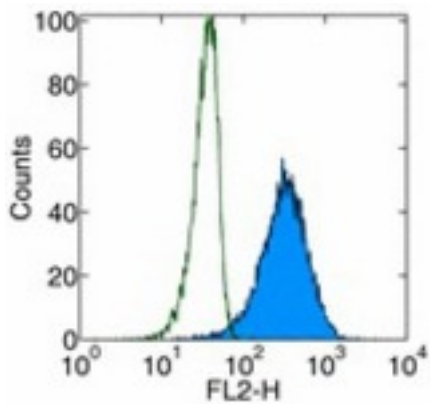
PDCD1 / CD279 / PD-1 Mouse anti-Human Monoclonal (J116) Antibody - LS-B7883 - LSBio	
CatalogID:	LS-B7883
Validation:	This antibody replaces catalog number LS-C106792. It has been validated for use in the following assays: IHC-P.
Target:	programmed cell death 1 (PDCD1)
Synonyms:	PDCD1 Antibody, CD279 Antibody, HPD-1 Antibody, HPD-I Antibody, PD1 Antibody, Protein PD-1 Antibody, SLEB2 Antibody, PD-1 Antibody, CD279 antigen Antibody, Programmed cell death 1 Antibody
Family / Subfamily:	Apoptosis
Host	PDCD1 antibody was produced in Mouse
Clonality:	Monoclonal
Isotype:	IgG1,k
Clone Name:	J116
Immunogen Species:	PDCD1 / CD279 / PD-1 antibody was raised against Human
Immunogen:	PDCD1 / CD279 / PD-1 antibody was raised against human PDCD1
Reactivity:	Human
Purification:	Affinity purified
Presentation:	Aqueous buffer, 0.09% sodium azide, may contain carrier protein/stabilizer.
Recommended Storage:	2-8 C.
Usage Summary:	The J116 antibody has been tested by flow cytometric analysis of human PD-1 transfected cells. This can be used at less than or equal to 1 ug per test. A test is defined as the amount (ug) of antibody that will stain a cell sample in a final volume of 100 ul. Cell number should be determined empirically but can range from 10 ⁵ to 10 ⁸ cells/test. It is recommended that the antibody be carefully titrated for optimal performance in the assay of interest.
Uses:	IHC - Paraffin (20 µg/ml), IHC - Frozen, Western blot, Immunoprecipitation, Flow Cytometry (Optimal dilution to be determined by the researcher)
Size:	50 µg
Concentration:	0.5 mg/ml

Immunohistochemistry Image:



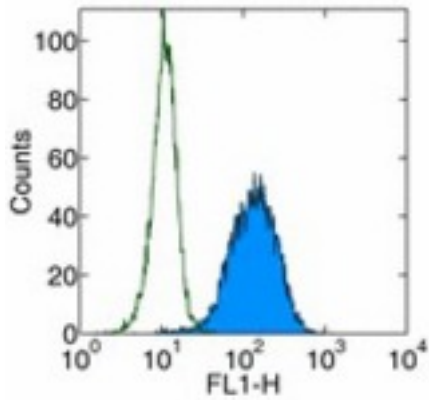
Anti-CD279 / PD-1 antibody IHC of human tonsil. Immunohistochemistry of formalin-fixed, paraffin-embedded tissue after heat-induced antigen retrieval. Antibody LS-B7883 dilution 20 ug/ml.

Flow Cytometry Image:



Surface staining of PE. Appropriate isotype controls were used (open histogram). Total viable cells were used for analysis.

Flow Cytometry Image:



Surface staining of human PD-1 transfected cells with anti-human PD-1 (J116) FITC. Appropriate isotype controls were used (open histogram). Total viable cells were used for analysis.

Requested From:

Japan

Laboratory Reagent For In Vitro Research Use Only

Not for resale without prior written consent from LifeSpan BioSciences, Inc.

Created on 9/24/2014

© 2014 LifeSpan BioSciences