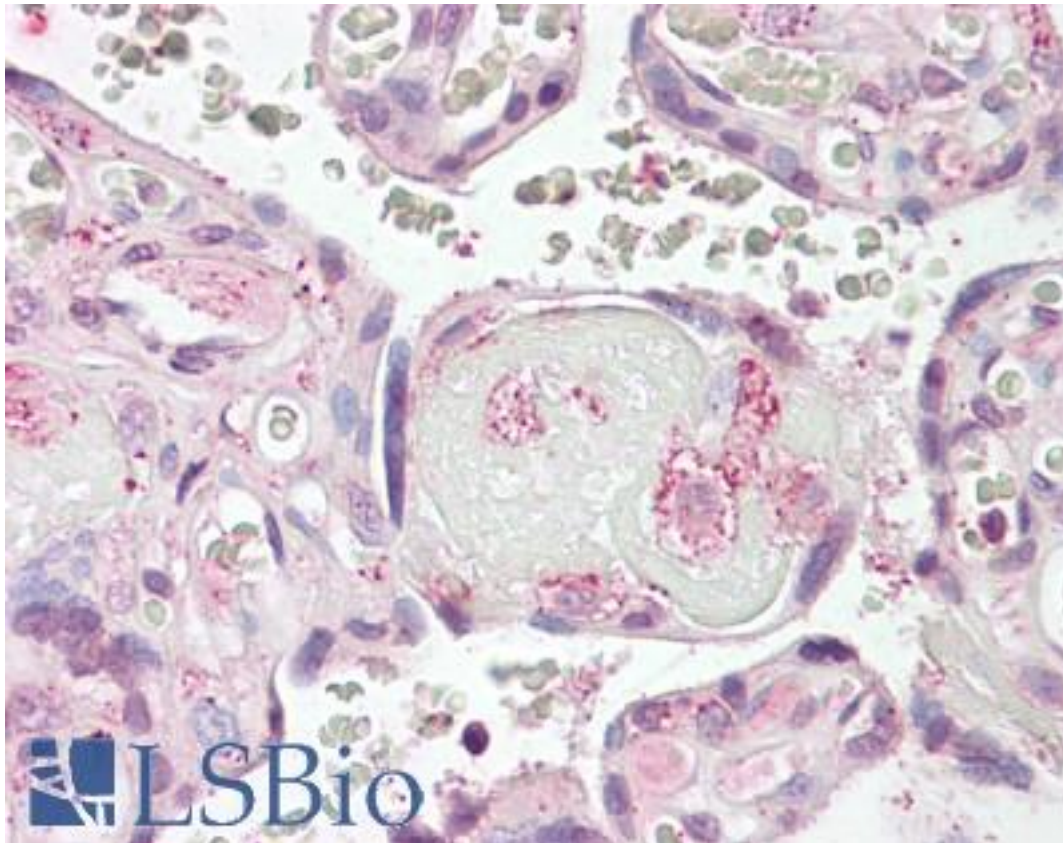


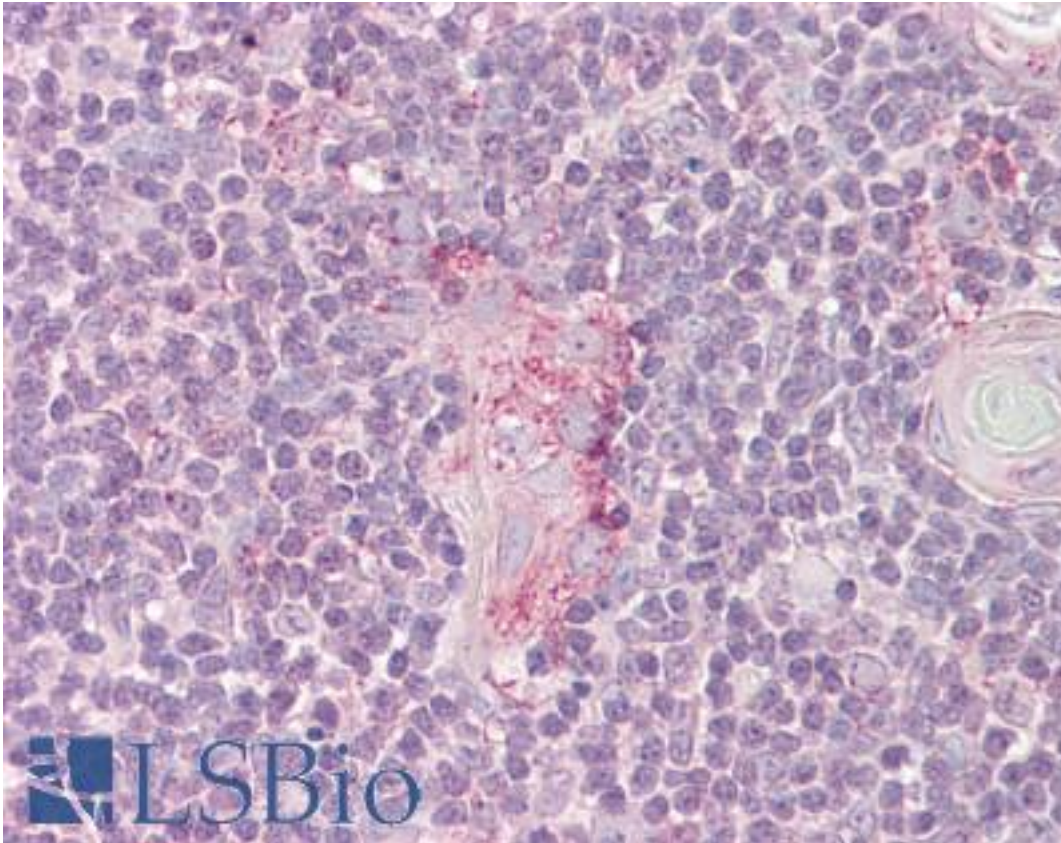
LYN Mouse anti-Human Monoclonal (aa39-58) Antibody - LS-B7849 - LSBio	
CatalogID:	LS-B7849
Validation:	This antibody replaces catalog number LS-C62121. It has been validated for use in the following assays: IHC-P.
Target:	v-yes-1 Yamaguchi sarcoma viral related oncogene homolog (LYN)
Synonyms:	LYN Antibody, Lyn protein tyrosine kinase Antibody, Lyn ptk Antibody, Lyn tyrosine kinase Antibody, p56Lyn Antibody, p53Lyn Antibody, Tyrosine-protein kinase Lyn Antibody, JTK8 Antibody, Lyn kinase Antibody
Family / Subfamily:	Protein Kinase / Src
Host	LYN antibody was produced in Mouse
Clonality:	Monoclonal
Isotype:	IgG2a,k
Immunogen Species:	LYN antibody was raised against Human
Antigen Type:	Synthetic peptide
Immunogen:	LYN antibody was raised against synthetic peptide (a.a. 39-58).
Epitope:	aa39-58
Reactivity:	Human, Mouse, Rat
Purification:	Ammonium sulfate precipitation
Presentation:	HEPES with 0.15M NaCl, 0.01% BSA, 0.03% sodium azide, and 50% glycerol
Recommended Storage:	Long term: -20°C; Short term: -20°C
Uses:	IHC - Paraffin (1:200), Western blot (1:2000), Immunoprecipitation (Optimal dilution to be determined by the researcher)
Size:	50 µl

Immunohistochemistry Image:



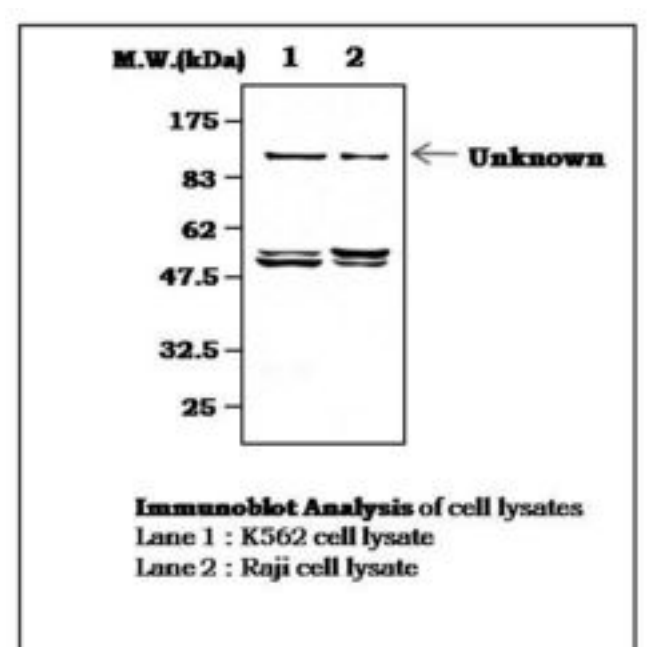
Anti-LYN antibody IHC of human placenta. Immunohistochemistry of formalin-fixed, paraffin-embedded tissue after heat-induced antigen retrieval. Antibody LS-B7849 dilution 1:200.

Immunohistochemistry Image:



Anti-LYN antibody IHC of human thymus. Immunohistochemistry of formalin-fixed, paraffin-embedded tissue after heat-induced antigen retrieval. Antibody LS-B7849 dilution 1:200.

Western Blot Image:



Laboratory Reagent For In Vitro Research Use Only

Not for resale without prior written consent from LifeSpan BioSciences, Inc.

Created on 9/24/2014

© 2014 LifeSpan BioSciences