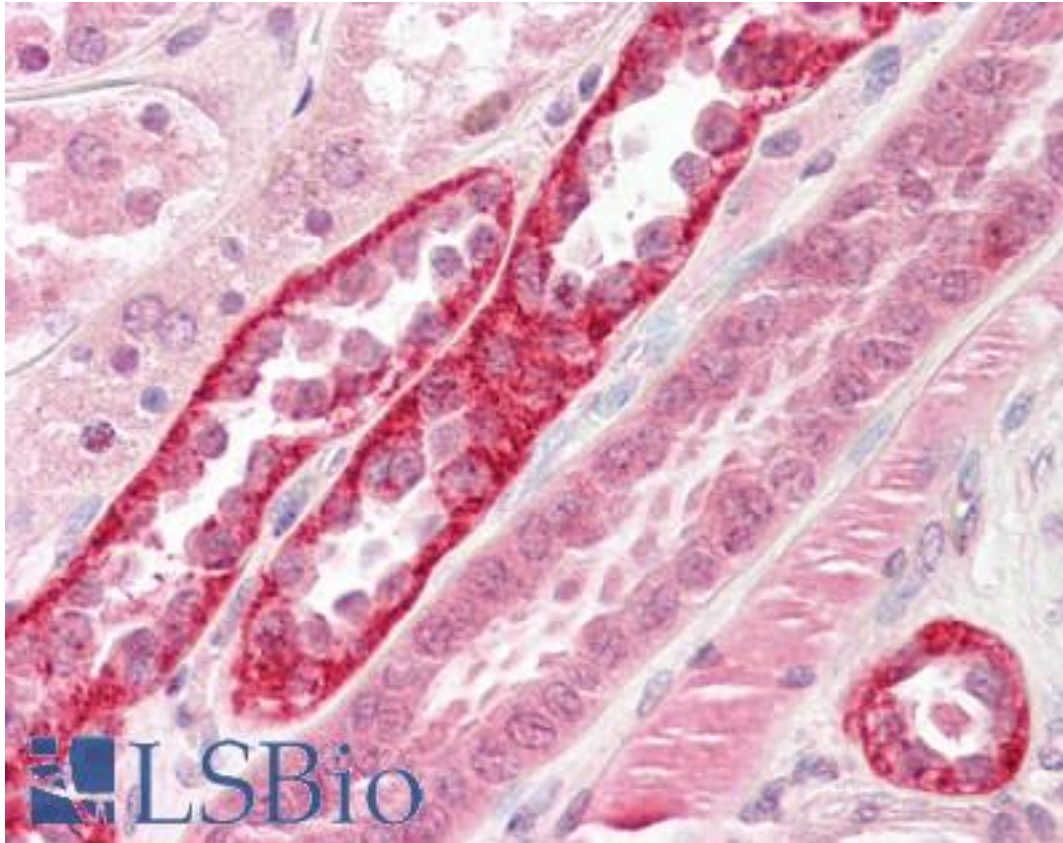


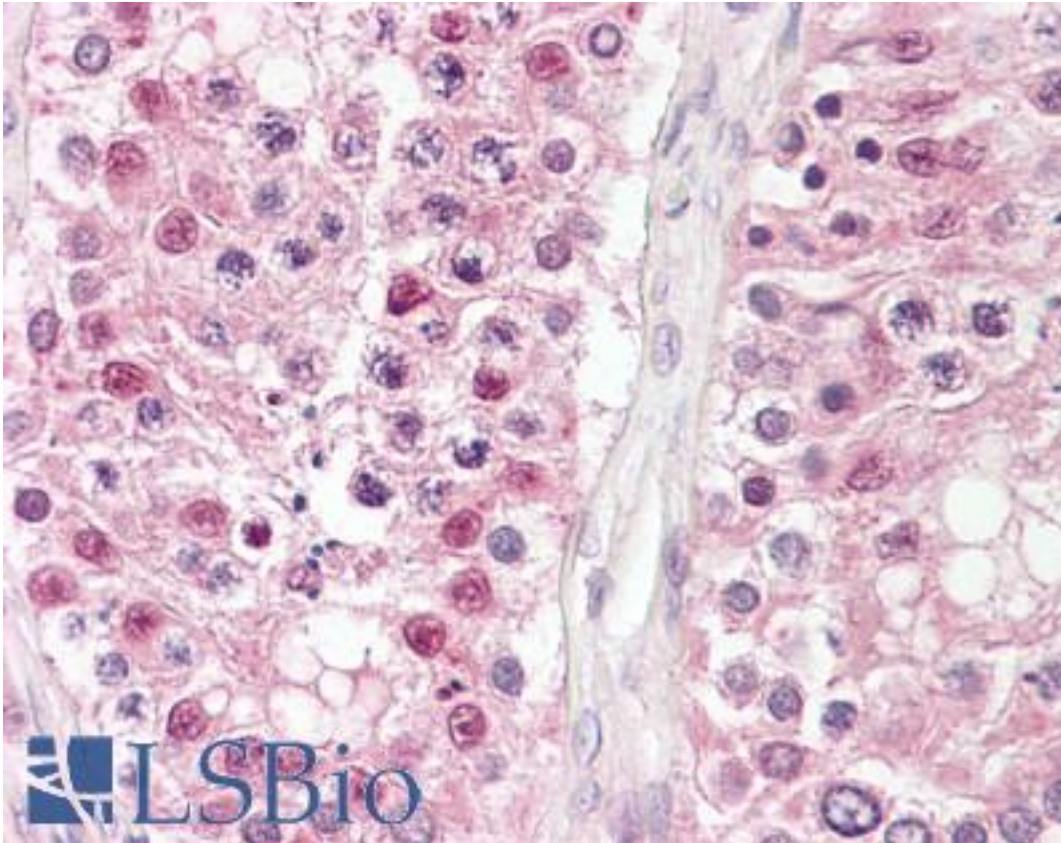
CSNK2A1 / CKII Mouse anti-Human Monoclonal Antibody - LS-B7845 - LSBio	
<b>CatalogID:</b>	LS-B7845
<b>Validation:</b>	This antibody replaces catalog number LS-C62077. It has been validated for use in the following assays: IHC-P.
<b>Target:</b>	casein kinase 2, alpha 1 polypeptide (CSNK2A1)
<b>Synonyms:</b>	CSNK2A1 Antibody, Casein kinase II alpha Antibody, Casein kinase II subunit alpha Antibody, Ck2 alpha Antibody, CK2 catalytic subunit alpha Antibody, CKII Antibody, CKIIalpha Antibody, CK2A1 Antibody, CKII alpha Antibody, Protein kinase CK2 Antibody, Casein kinase 2 alpha Antibody, CK II alpha Antibody
<b>Family / Subfamily:</b>	Protein Kinase / Casein kinase II
<b>Host</b>	CSNK2A1 antibody was produced in Mouse
<b>Clonality:</b>	Monoclonal
<b>Isotype:</b>	IgG2b,k
<b>Immunogen Species:</b>	CSNK2A1 / CKII antibody was raised against Human
<b>Immunogen:</b>	CSNK2A1 / CKII antibody was raised against recombinant human protein purified from E. coli (His-Casein kinase II a).
<b>Reactivity:</b>	Human, Mouse, Rat
<b>Purification:</b>	Ammonium sulfate precipitation
<b>Presentation:</b>	HEPES with 0.15M NaCl, 0.01% BSA, 0.03% sodium azide, and 50% glycerol
<b>Recommended Storage:</b>	Long term: -20°C; Short term: -20°C
<b>Uses:</b>	IHC - Paraffin (1:200), Western blot (1:2000), ELISA (Optimal dilution to be determined by the researcher)
<b>Size:</b>	50 µl

**Immunohistochemistry Image:**



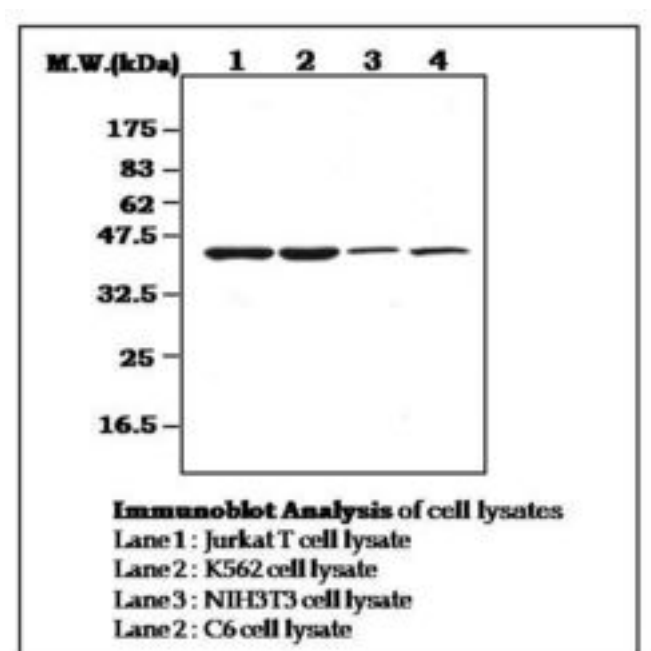
Anti-CSNK2A1 / CKII antibody IHC of human kidney. Immunohistochemistry of formalin-fixed, paraffin-embedded tissue after heat-induced antigen retrieval. Antibody LS-B7845 dilution 1:200.

**Immunohistochemistry Image:**



Anti-CSNK2A1 / CKII antibody IHC of human testis. Immunohistochemistry of formalin-fixed, paraffin-embedded tissue after heat-induced antigen retrieval. Antibody LS-B7845 dilution 1:200.

**Western Blot Image:**



<b>Requested From:</b>	Japan
Laboratory Reagent For In Vitro Research Use Only	
Not for resale without prior written consent from LifeSpan BioSciences, Inc.	
Created on 9/24/2014	
© 2014 LifeSpan BioSciences	