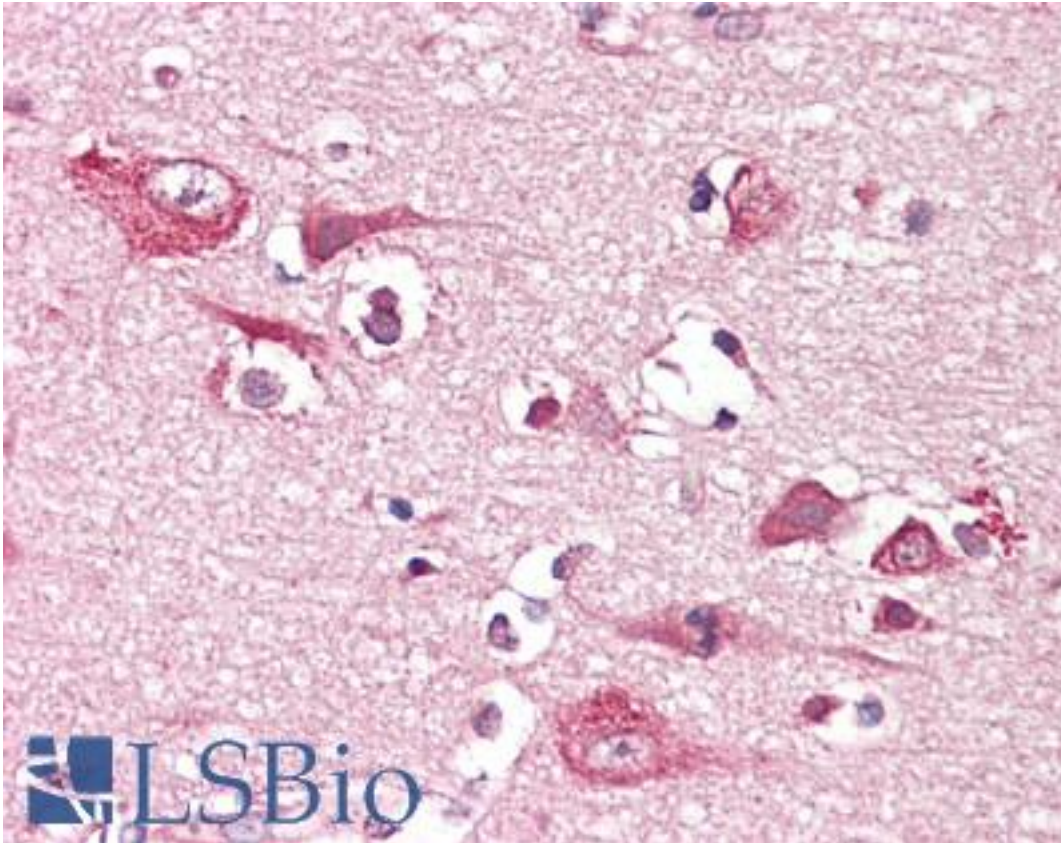


PLCG1 Mouse anti-Human Monoclonal (2B1) Antibody - LS-B7825 - LSBio

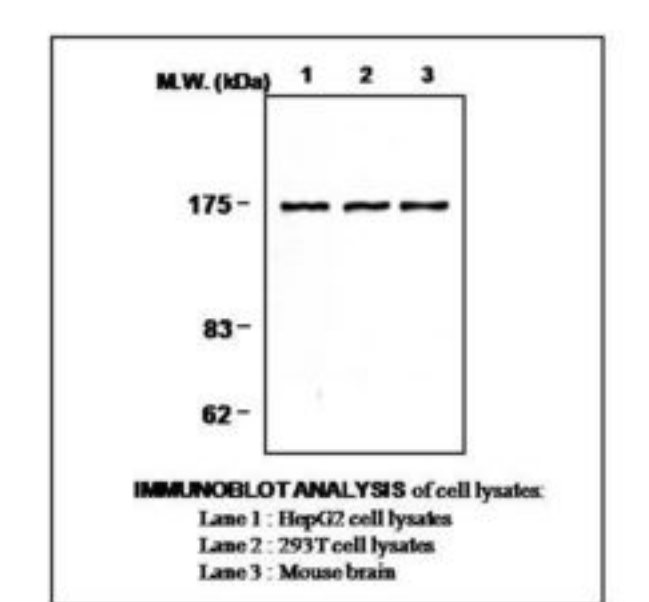
CatalogID:	LS-B7825
Validation:	This antibody replaces catalog number LS-C61923. It has been validated for use in the following assays: IHC-P.
Target:	phospholipase C, gamma 1 (PLCG1)
Synonyms:	PLCG1 Antibody, Phospholipase C, gamma 1 Antibody, Phospholipase C-148 Antibody, Phosphoinositidase C Antibody, Phospholipase C-II Antibody, Inositoltrisphosphohydrolase Antibody, PLC-gamma-1 Antibody, PLC1 Antibody, PLC-148 Antibody, PLC-II Antibody, PLC148 Antibody, NCKAP3 Antibody, Phospholipase C-gamma-1 Antibody, PLCgamma1 Antibody
Family / Subfamily:	Phospholipase / not assigned-Phospholipase
Host	PLCG1 antibody was produced in Mouse
Clonality:	Monoclonal
Isotype:	IgG2a,k
Clone Name:	2B1
Immunogen Species:	PLCG1 antibody was raised against Human
Immunogen:	PLCG1 antibody was raised against recombinant human PLCG1 purified from E. coli.
Reactivity:	Human, Mouse, Rat
Purification:	Ammonium sulfate precipitation
Presentation:	HEPES with 0.15M NaCl, 0.01% BSA, 0.03% sodium azide, and 50% glycerol
Recommended Storage:	Long term: -20°C; Short term: -20°C
Uses:	IHC - Paraffin (1:200), Western blot (1:2000), Immunoprecipitation (Optimal dilution to be determined by the researcher)
Size:	50 µl

Immunohistochemistry Image:



Anti-PLCG1 antibody IHC of human brain, cortex. Immunohistochemistry of formalin-fixed, paraffin-embedded tissue after heat-induced antigen retrieval. Antibody LS-B7825 dilution 1:200.

Western Blot Image:



Requested From:

Japan

Laboratory Reagent For In Vitro Research Use Only

Not for resale without prior written consent from LifeSpan BioSciences, Inc.

Created on 9/24/2014

© 2014 LifeSpan BioSciences