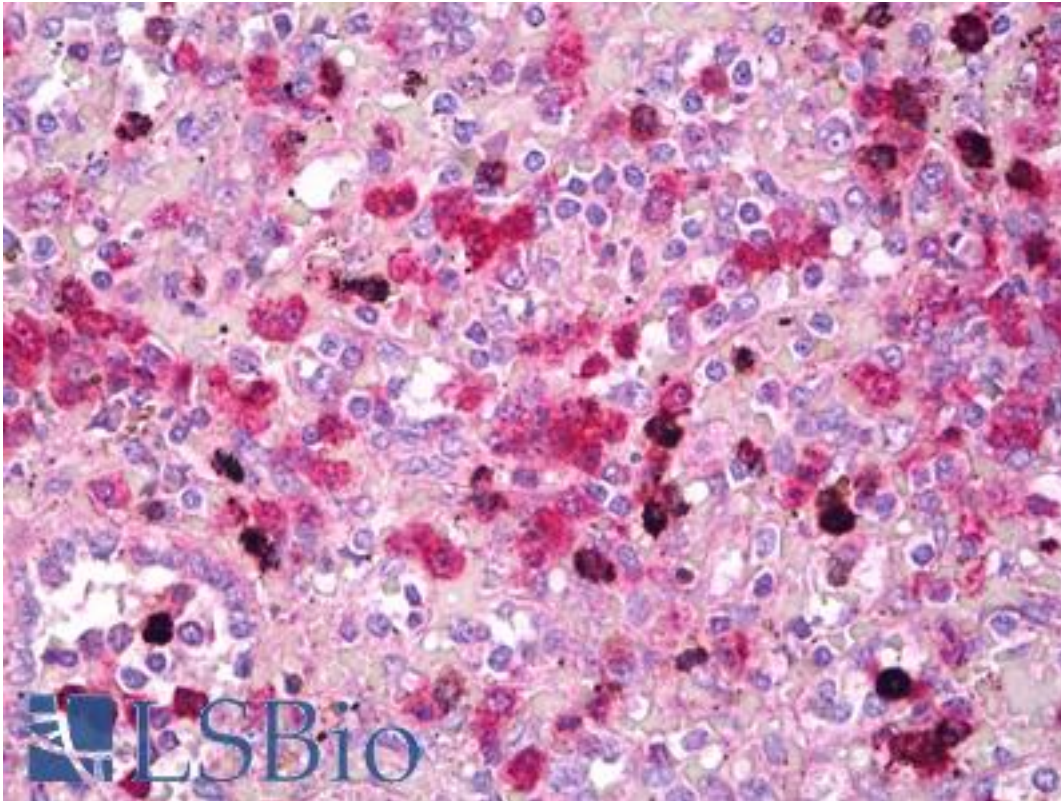


TFEB Rabbit anti-Human Polyclonal Antibody - LS-B7815 - LSBio

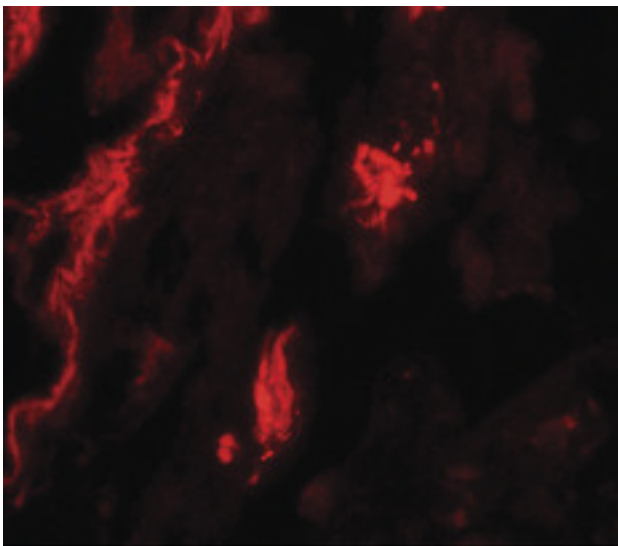
CatalogID:	LS-B7815
Validation:	This antibody replaces catalog number LS-C149748. It has been validated for use in the following assays: IHC-P.
Target:	transcription factor EB (TFEB)
Synonyms:	TFEB Antibody, ALPHATFEB Antibody, BHLHE35 Antibody, T-cell transcription factor EB Antibody, TCFEB Antibody, Transcription factor EB Antibody
Family / Subfamily:	Transcription factor
Host	TFEB antibody was produced in Rabbit
Clonality:	Polyclonal
Immunogen Species:	TFEB antibody was raised against Human
Antigen Type:	Synthetic peptide
Immunogen:	TFEB antibody was raised against synthetic peptide from human TFEB
Reactivity:	Human
Purification:	Immunoaffinity purified
Presentation:	PBS, 0.02% sodium azide
Recommended Storage:	Short term 4°C, long term aliquot and store at -20°C, avoid freeze thaw cycles. Store undiluted.
Uses:	IHC - Paraffin (5 µg/ml) (Optimal dilution to be determined by the researcher)
Size:	50 µg
Concentration:	1 mg/ml

Immunohistochemistry Image:



Anti-TFEB antibody IHC of human spleen. Immunohistochemistry of formalin-fixed, paraffin-embedded tissue after heat-induced antigen retrieval. Antibody LS-B7815 dilution 5 ug/ml.

Immunofluorescence Image:



Immunofluorescence of TFEB in human lung tissue with TFEB antibody at 20 ug/ml.

Requested From:

Japan

Laboratory Reagent For In Vitro Research Use Only

Not for resale without prior written consent from LifeSpan BioSciences, Inc.

Created on 9/24/2014

© 2014 LifeSpan BioSciences