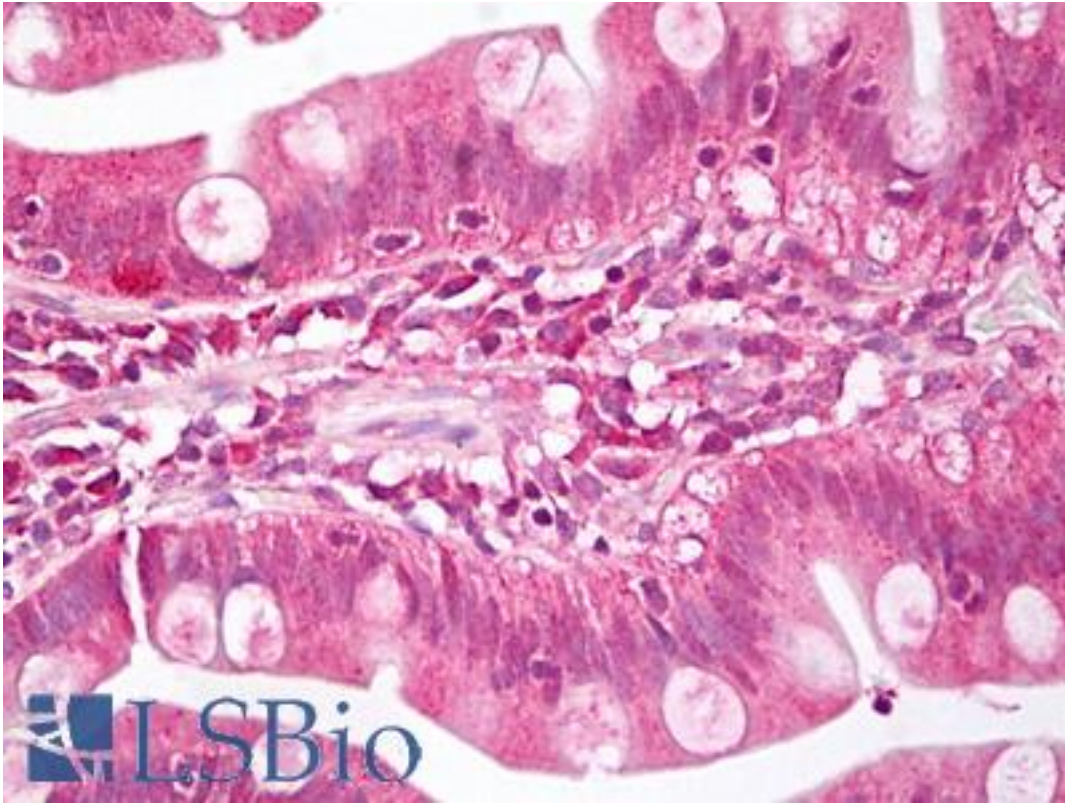


MEIS1 Rabbit anti-Human Polyclonal (aa280-330) Antibody - LS-B7807 - LSBio

CatalogID:	LS-B7807
Validation:	This antibody replaces catalog number LS-C148606. It has been validated for use in the following assays: IHC-P.
Target:	Meis homeobox 1 (MEIS1)
Synonyms:	MEIS1 Antibody, Leukemogenic homolog protein Antibody, Meis1 (mouse) homolog Antibody, Meis homeobox 1 Antibody, WUGSC:H_NH0444B04.1 Antibody, Homeobox protein Meis1 Antibody
Host	MEIS1 antibody was produced in Rabbit
Clonality:	Polyclonal
Isotype:	IgG
Immunogen Species:	MEIS1 antibody was raised against Human
Antigen Type:	Synthetic peptide
Immunogen:	MEIS1 antibody was raised against a portion of amino acids 280-330 of MEIS1 was used as the immunogen.
Specificity:	Human MEIS1
Epitope:	aa280-330
Reactivity:	Human, Mouse, Rat, Dog, Horse, Chicken, Xenopus
Purification:	Immunoaffinity purified
Presentation:	PBS, 0.05% BSA, 0.05% sodium azide
Recommended Storage:	Store at 4°C for short term applications. For long term storage, aliquot and store at -20°C.
Uses:	IHC - Paraffin (10 µg/ml) (Optimal dilution to be determined by the researcher)
Size:	50 µg
Concentration:	0.5 mg/ml

Immunohistochemistry Image:



Anti-MEIS1 antibody IHC of human small intestine. Immunohistochemistry of formalin-fixed, paraffin-embedded tissue after heat-induced antigen retrieval. Antibody LS-B7807 dilution 10 ug/ml.

Requested From:

Japan

Laboratory Reagent For In Vitro Research Use Only

Not for resale without prior written consent from LifeSpan BioSciences, Inc.

Created on 9/24/2014

© 2014 LifeSpan BioSciences