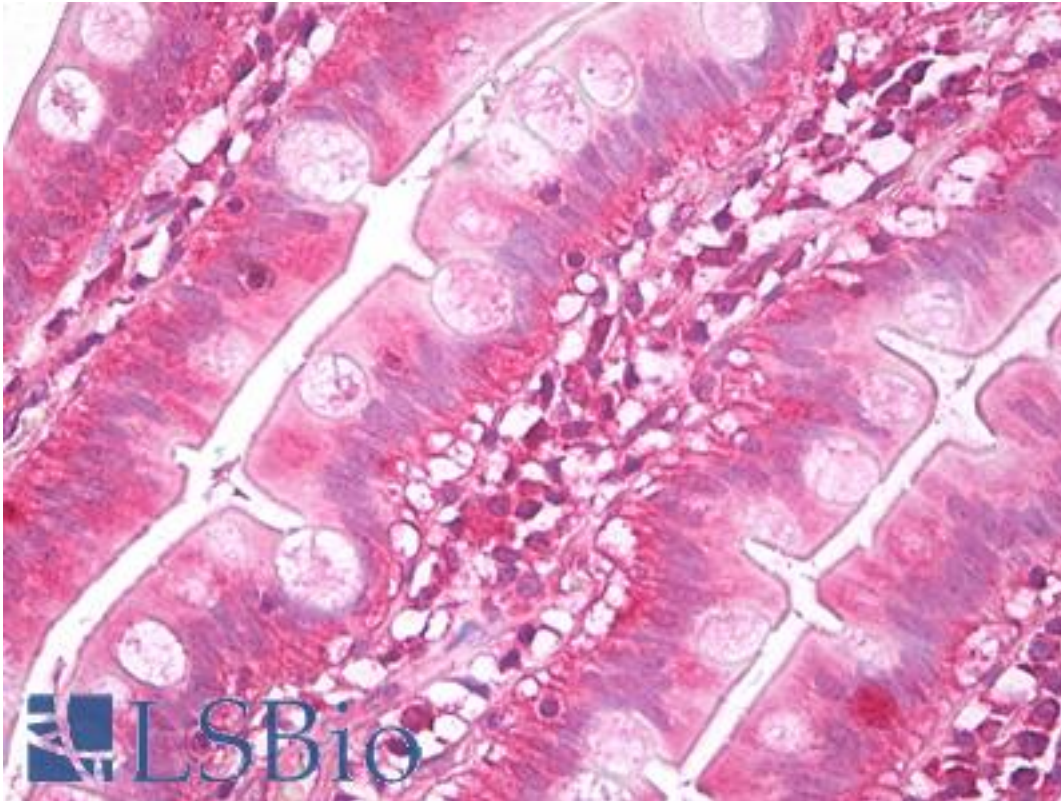


NUDT1 / MTH1 Rabbit anti-Human Polyclonal Antibody - LS-B7800 - LSBio	
CatalogID:	LS-B7800
Validation:	This antibody replaces catalog number LS-C136885. It has been validated for use in the following assays: IHC-P.
Target:	nudix (nucleoside diphosphate linked moiety X)-type motif 1 (NUDT1)
Synonyms:	NUDT1 Antibody, 8-oxo-dGTPase Antibody, 2-hydroxy-dATP diphosphatase Antibody, MutT human homolog 1 Antibody, Nudix motif 1 Antibody, MTH1 Antibody
Host	NUDT1 antibody was produced in Rabbit
Clonality:	Polyclonal
Isotype:	IgG
Immunogen Species:	NUDT1 / MTH1 antibody was raised against Human
Antigen Type:	Synthetic peptide
Immunogen:	NUDT1 / MTH1 antibody was raised against synthetic peptide
Specificity:	MTH1 antibody detects endogenous levels of MTH1 protein. Not tested with other proteins.
Reactivity:	Human
Purification:	Purified
Presentation:	PBS, pH 7.4, 0.05% sodium azide
Recommended Storage:	Short term 4°C, long term aliquot and store at -20°C, avoid freeze thaw cycles.
Uses:	IHC - Paraffin (1:100), Western blot (1:200 - 1:1000), ELISA (1:40000) (Optimal dilution to be determined by the researcher)
Size:	50 µl
Concentration:	1 mg/ml

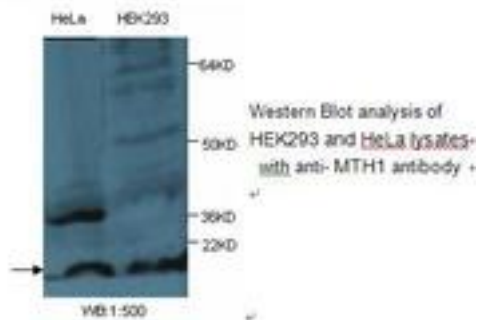
Immunohistochemistry Image:



Anti-NUDT1 / MTH1 antibody IHC of human small intestine. Immunohistochemistry of formalin-fixed, paraffin-embedded tissue after heat-induced antigen retrieval. Antibody LS-B7800 dilution 1:100.

Western Blot Image:

This antibody, identifies a band of approximately 18 KD in HEK293 and HeLa cell lysates.



Requested From:

Japan

Laboratory Reagent For In Vitro Research Use Only

Not for resale without prior written consent from LifeSpan BioSciences, Inc.

Created on 9/24/2014

© 2014 LifeSpan BioSciences