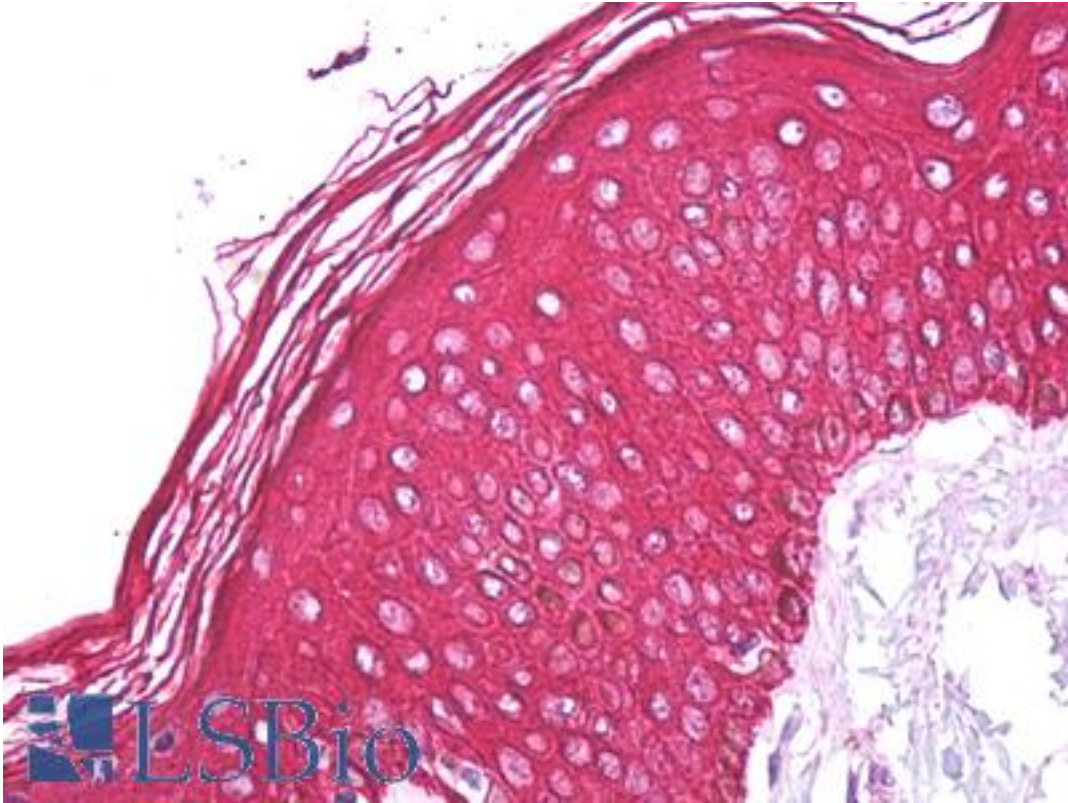


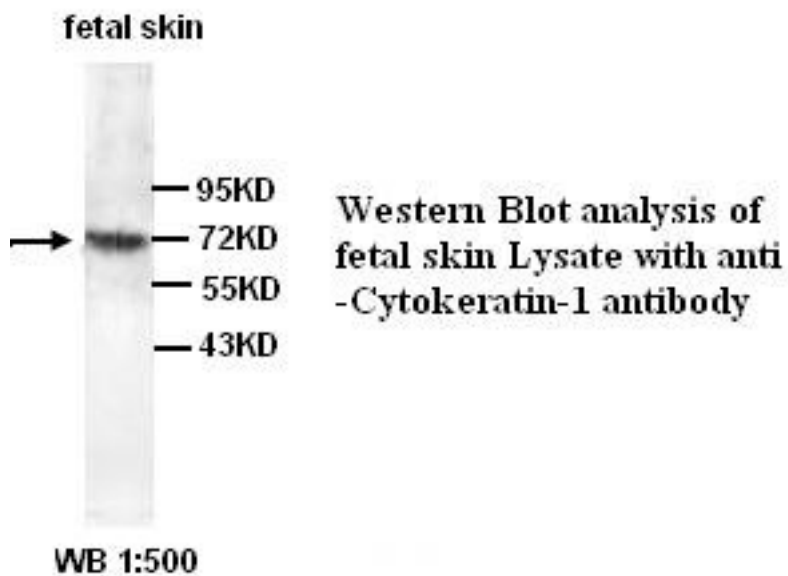
KRT1 / CK1 / Cytokeratin 1 Rabbit anti-Human Polyclonal (Internal) Antibody - LS-B7799 - LSBio	
CatalogID:	LS-B7799
Validation:	This antibody replaces catalog number LS-C137104. It has been validated for use in the following assays: IHC-P.
Target:	keratin 1 (KRT1)
Synonyms:	KRT1 Antibody, 67 kDa cytokeratin Antibody, CK-1 Antibody, CK1 Antibody, Cytokeratin 1 Antibody, Cytokeratin-1 Antibody, Epidermolytic hyperkeratosis 1 Antibody, EHK Antibody, EHK1 Antibody, Hair alpha protein Antibody, EPPK Antibody, NEPPK Antibody, K1 Antibody, Keratin-1 Antibody, KRTA Antibody, Type-II keratin Kb1 Antibody, Type II keratin Antibody, Keratin 1 Antibody, KRT1A Antibody
Family / Subfamily:	Keratin / not assigned-Keratin
Host	KRT1 antibody was produced in Rabbit
Clonality:	Polyclonal
Isotype:	IgG
Immunogen Species:	KRT1 / CK1 / Cytokeratin 1 antibody was raised against Human
Antigen Type:	Synthetic peptide
Immunogen:	KRT1 / CK1 / Cytokeratin 1 antibody was raised against a peptide from the internal region of human Cytokeratin-1 protein
Epitope:	Internal
Reactivity:	Human, Mouse, Rat
Purification:	Affinity purified
Presentation:	PBS, pH 7.4, 0.02% sodium azide
Recommended Storage:	Short term 4°C, long term aliquot and store at -20°C, avoid freeze thaw cycles.
Uses:	IHC - Paraffin (1:100), Western blot (1:200 - 1:1000), ELISA (1:10000 - 1:80000) (Optimal dilution to be determined by the researcher)
Size:	50 µl
Concentration:	1 mg/ml

Immunohistochemistry Image:



Anti-Cytokeratin 1 / Keratin 1 antibody IHC of human skin. Immunohistochemistry of formalin-fixed, paraffin-embedded tissue after heat-induced antigen retrieval. Antibody LS-B7799 dilution 1:100.

Western Blot Image:



Requested From:

Japan

Laboratory Reagent For In Vitro Research Use Only

Not for resale without prior written consent from LifeSpan BioSciences, Inc.

Created on 9/24/2014

© 2014 LifeSpan BioSciences