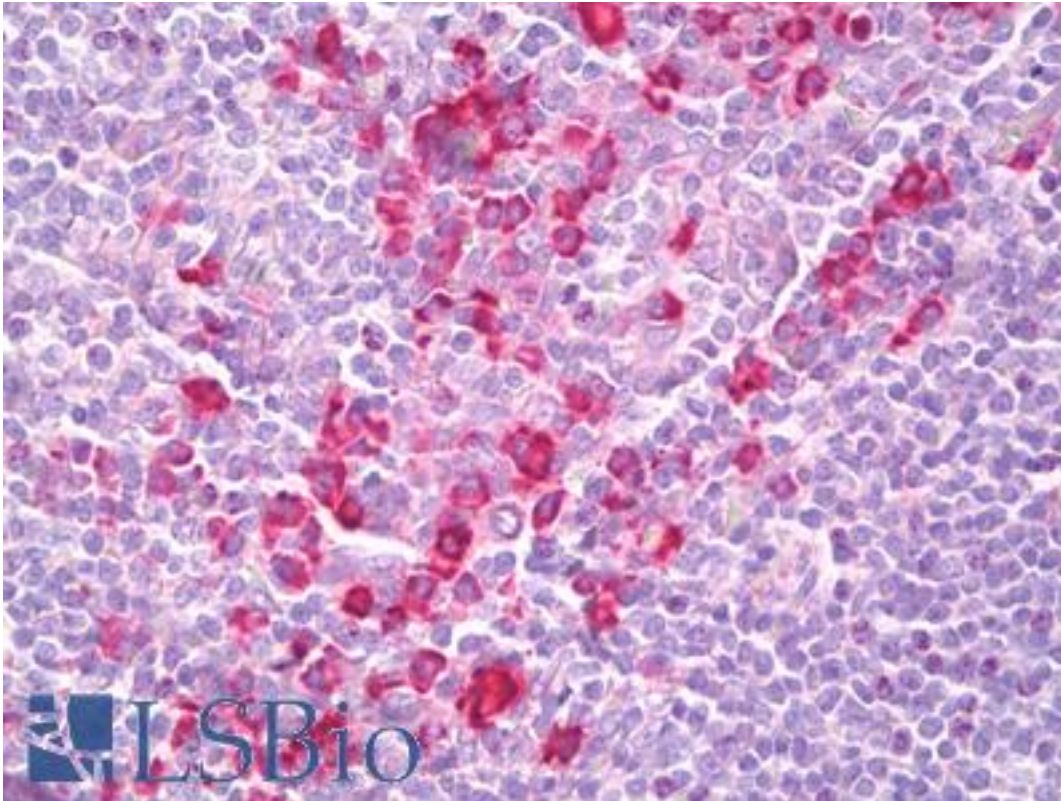


**PHACTR2 Rabbit anti-Human Polyclonal (N-Terminus) Antibody - LS-B7783 - LSBio**

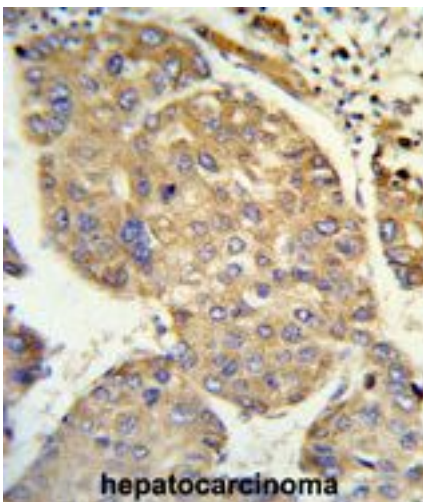
<b>CatalogID:</b>	LS-B7783
<b>Validation:</b>	This antibody replaces catalog number LS-C100273. It has been validated for use in the following assays: IHC-P.
<b>Target:</b>	phosphatase and actin regulator 2 (PHACTR2)
<b>Synonyms:</b>	PHACTR2 Antibody, C6orf56 Antibody, KIAA0680 Antibody
<b>Host</b>	PHACTR2 antibody was produced in Rabbit
<b>Clonality:</b>	Polyclonal
<b>Immunogen Species:</b>	PHACTR2 antibody was raised against Human
<b>Antigen Type:</b>	Synthetic peptide
<b>Immunogen:</b>	PHACTR2 antibody was raised against kLH conjugated synthetic peptide selected from the N-terminal region of human PHACTR2.
<b>Epitope:</b>	N-Terminus
<b>Reactivity:</b>	Human
<b>Purification:</b>	Ammonium sulfate precipitation
<b>Presentation:</b>	PBS, 0.09% sodium azide
<b>Recommended Storage:</b>	Maintain refrigerated at 2-8°C for up to 6 months. For long term storage store at -20°C.
<b>Uses:</b>	IHC - Paraffin (10 µg/ml), Western blot (1:1000) (Optimal dilution to be determined by the researcher)
<b>Size:</b>	50 µg
<b>Concentration:</b>	0.25 mg/ml

**Immunohistochemistry Image:**



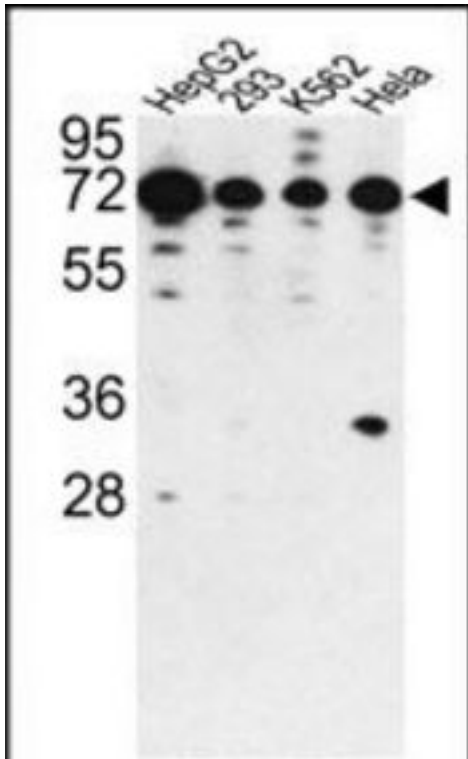
Anti-PHACTR2 antibody IHC of human tonsil. Immunohistochemistry of formalin-fixed, paraffin-embedded tissue after heat-induced antigen retrieval. Antibody LS-B7783 dilution 10 ug/ml.

**Immunohistochemistry Image:**



Formalin-fixed and paraffin-embedded human hepatocarcinoma reacted with PHACTR2 Antibody (N-term), which was peroxidase-conjugated to the secondary antibody, followed by DAB staining.

**Western Blot Image:**



Western blot of PHACTR2 antibody (N-term) LS-B7783 in HepG2, 293, K562 and HeLa cell line lysates (35 ug/lane). PHACTR2 (arrow) was detected using the purified Pab.

**Requested From:**

Japan

Laboratory Reagent For In Vitro Research Use Only

Not for resale without prior written consent from LifeSpan BioSciences, Inc.

Created on 9/24/2014

© 2014 LifeSpan BioSciences