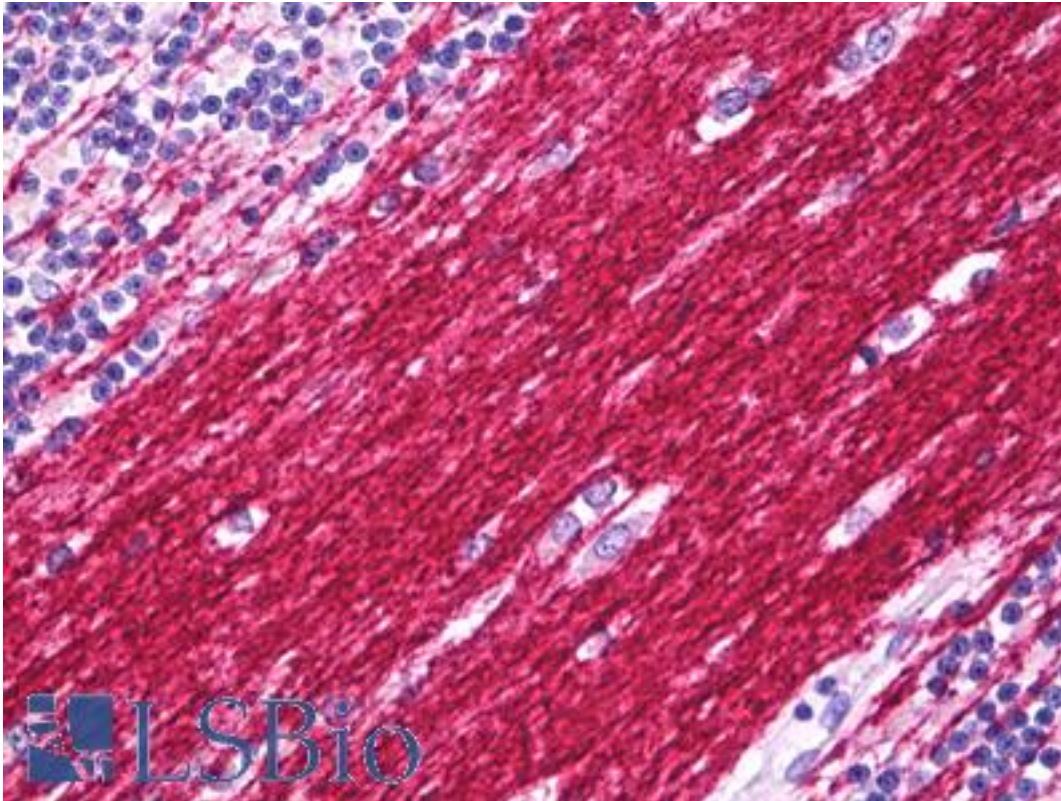


PLP1 / Myelin PLP Mouse anti-Human Monoclonal (C-Terminus) Antibody - LS-B7759 - LSBio	
CatalogID:	LS-B7759
Validation:	This antibody replaces catalog number LS-C25718. It has been validated for use in the following assays: IHC-P.
Target:	proteolipid protein 1 (PLP1)
Synonyms:	PLP1 Antibody, HLD1 Antibody, PMD Antibody, Myelin proteolipid protein Antibody, Proteolipid protein 1 Antibody, SPG2 Antibody, Lipophilin Antibody, MMPL Antibody, PLP Antibody, PLP/DM20 Antibody
Host	PLP1 antibody was produced in Mouse
Clonality:	Monoclonal
Isotype:	IgG2a
Immunogen Species:	PLP1 / Myelin PLP antibody was raised against Human
Antigen Type:	Synthetic peptide
Immunogen:	PLP1 / Myelin PLP antibody was raised against myelin proteolipid protein, synthetic peptide CGRGTKF corresponding to the C-terminal peptide.
Specificity:	Reacts with myelin proteolipid protein in many mammalian species. Shows cross-reactivity to DM20.
Epitope:	C-Terminus
Reactivity:	Human, Mammal
Purification:	Purified
Presentation:	PBS buffer, pH 7.2, 0.09% sodium azide
Recommended Storage:	Short term 4°C, long term aliquot and store at -20°C, avoid freeze thaw cycles. Store undiluted.
Usage Summary:	Suitable for use in Western Blot, Immunocytochemistry and Immunohistochemistry. Western Blot: Can aggregate causing HMW bands to sometimes appear in certain preparations. Immunocytochemistry: 4% PFA fixed cells for 5-10 minutes at RT. Use 0.1% triton in block only to allow antibody access to C-terminal epitope. Immunohistochemistry (Frozen): Fresh frozen sections or 4% PFA fixed, frozen tissues. Epitope is internal, use 0.1-0.2% triton X-100 in the blocking step for permeabilization. Immunohistochemistry (Paraffin): Works best with lightly fixed tissues, or Bouin's fixed material, although there are reports of traditional formalin fixation also working with antigen recovery. Positive control: Brain.
Uses:	IHC - Paraffin (10 µg/ml), IHC - Frozen, ICC, Western blot (Optimal dilution to be determined by the researcher)
Size:	50 µg
Concentration:	1 mg/ml

Immunohistochemistry Image:



Anti-PLP1 antibody IHC of human brain cerebellum, neuropil. Immunohistochemistry of formalin-fixed, paraffin-embedded tissue after heat-induced antigen retrieval. Antibody LS-B7759 dilution 10 ug/ml.

Requested From:

Japan

Laboratory Reagent For In Vitro Research Use Only

Not for resale without prior written consent from LifeSpan BioSciences, Inc.

Created on 9/24/2014

© 2014 LifeSpan BioSciences