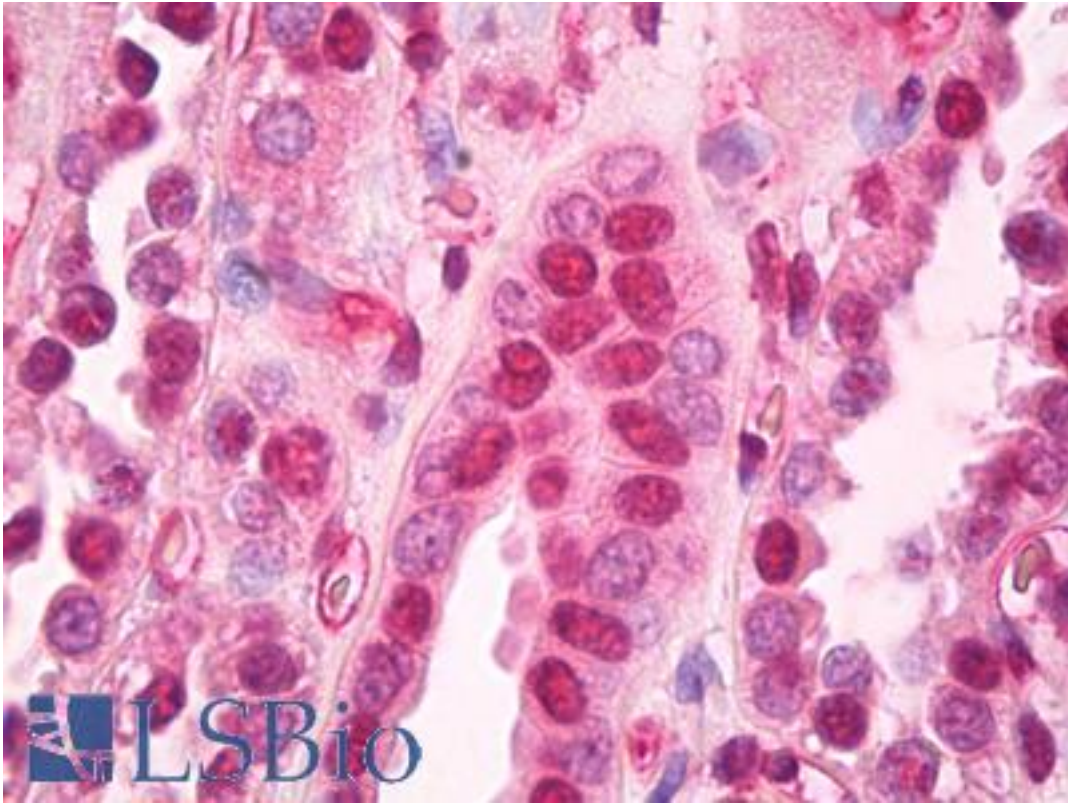


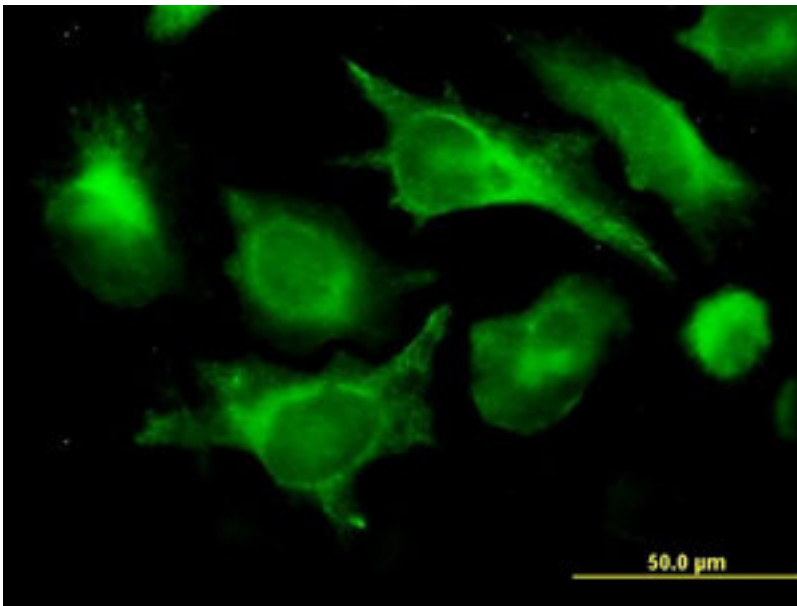
B2M / Beta 2 Microglobulin Mouse anti-Human Monoclonal (3F9-2C2) Antibody - LS-B7757 - LSBio	
CatalogID:	LS-B7757
Validation:	This antibody replaces catalog number LS-C133059. It has been validated for use in the following assays: IHC-P.
Target:	beta-2-microglobulin (B2M)
Synonyms:	B2M Antibody, Beta 2 Microglobulin Antibody, Beta-2-microglobulin Antibody, Beta -2-microglobin Antibody
Host	B2M antibody was produced in Mouse
Clonality:	Monoclonal
Isotype:	IgG2b,k
Clone Name:	3F9-2C2
Immunogen Species:	B2M / Beta 2 Microglobulin antibody was raised against Human
Immunogen:	B2M / Beta 2 Microglobulin antibody was raised against b2M (AAH32589, 1 a.a. ~ 120 a.a) full length recombinant protein with GST tag. MW of the GST tag alone is 26 KDa.
Specificity:	Human Beta 2-Microglobulin
Reactivity:	Human
Purification:	Protein A purified
Presentation:	PBS, pH 7.2
Recommended Storage:	Short term 4°C, long term aliquot and store at -20°C, avoid freeze thaw cycles.
Usage Summary:	Immunohistochemistry: Formalin-fixed paraffin-embedded sections. RNAi Knockdown: Antibody validated. Sandwich ELISA: Recombinant protein. Western Blot: Cell lysate, Transfected lysate, Recombinant protein.
Uses:	IHC - Paraffin (10 µg/ml), Immunofluorescence (10 µg/ml), Western blot, ELISA, RNA interference (Optimal dilution to be determined by the researcher)
Size:	50 µg
Concentration:	1 mg/ml

Immunohistochemistry Image:



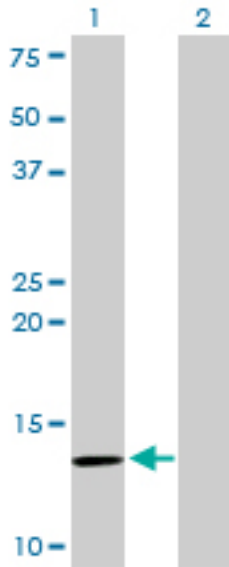
Anti-B2M / Beta 2 Microglobulin antibody IHC of human kidney. Immunohistochemistry of formalin-fixed, paraffin-embedded tissue after heat-induced antigen retrieval. Antibody LS-B7757 dilution 10 ug/ml.

Immunofluorescence Image:



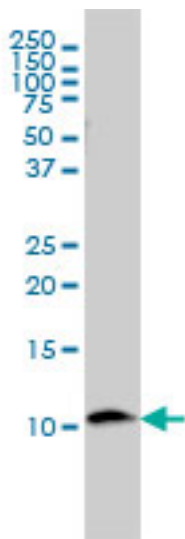
Immunofluorescence of monoclonal antibody to B2M on HeLa cell. [antibody concentration 10 ug/ml]

Western Blot Image:



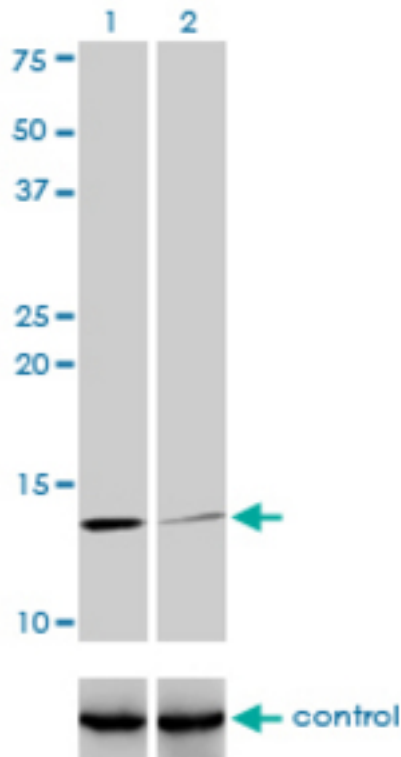
Western blot of B2M expression in transfected 293T cell line by B2M monoclonal antibody, clone 3F9-2C2.

Western Blot Image:



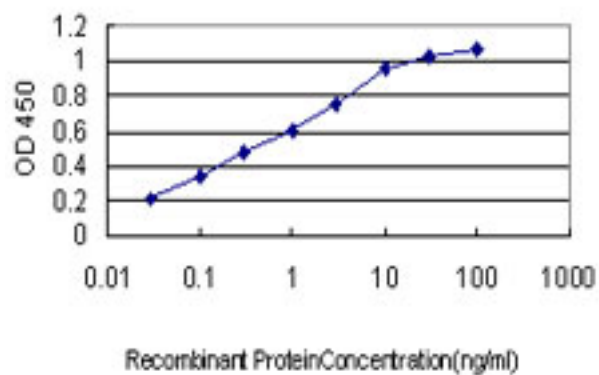
B2M monoclonal antibody, clone 3F9-2C2 Western blot of B2M expression in U-2 OS.

RNA interference Image:



Western blot of B2M over-expressed 293 cell line, cotransfected with B2M Validated Chimera RNAi (Lane 2) or non-transfected control (Lane 1). Blot probed with B2M monoclonal antibody, clone 3F9-2C2. GAPDH (36.1 kD) used as specificity a.

ELISA Image:



Detection limit for recombinant GST tagged B2M is approximately 0.03 ng/ml as a capture antibody.

Requested From:

Japan

Laboratory Reagent For In Vitro Research Use Only

Not for resale without prior written consent from LifeSpan BioSciences, Inc.

Created on 9/24/2014

© 2014 LifeSpan BioSciences