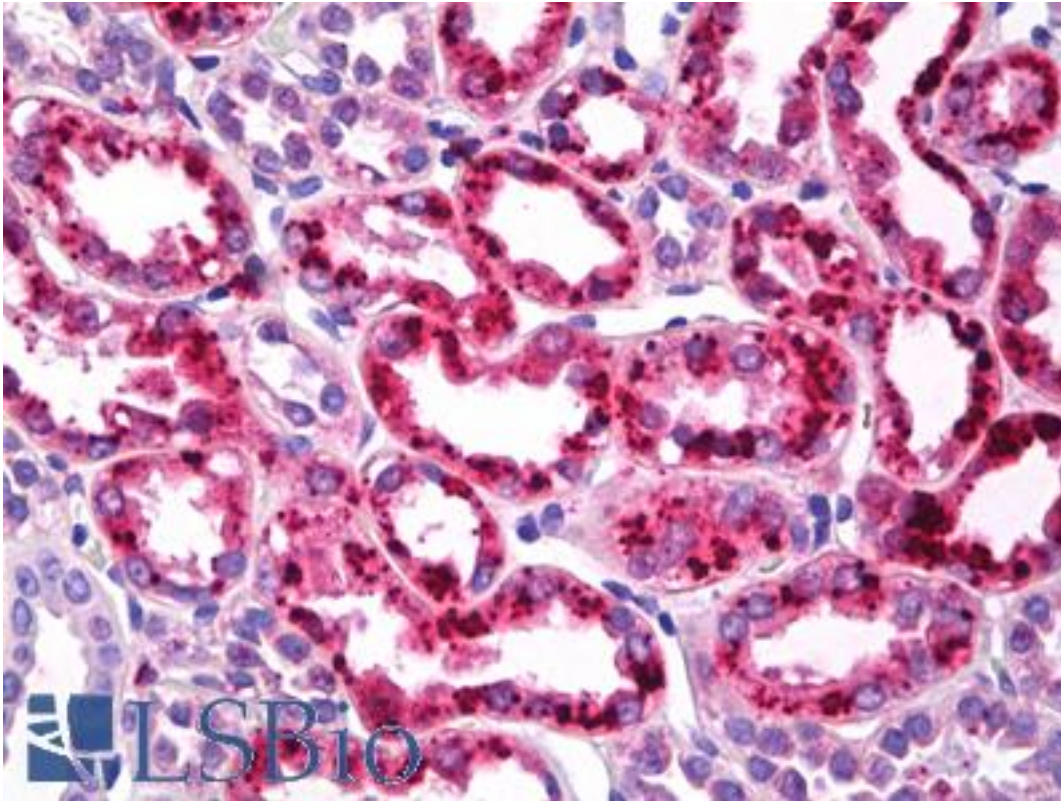


CLDN2 / Claudin 2 Mouse anti-Mouse Monoclonal (C-Terminus) Antibody - LS-B7756 - LSBio	
CatalogID:	LS-B7756
Validation:	This antibody replaces catalog number LS-C6145. It has been validated for use in the following assays: IHC-P.
Target:	claudin 2 (CLDN2)
Synonyms:	CLDN2 Antibody, Claudin 2 Antibody, SP82 Antibody, Claudin-2 Antibody
Family / Subfamily:	Claudin / not assigned-Claudin
Host	CLDN2 antibody was produced in Mouse
Clonality:	Monoclonal
Isotype:	IgG2b
Immunogen Species:	CLDN2 / Claudin 2 antibody was raised against Mouse
Antigen Type:	Synthetic peptide
Immunogen:	CLDN2 / Claudin 2 antibody was raised against a synthetic peptide corresponding to a 26 amino acid sequence at the C-terminus of the mouse Claudin-2 protein.
Specificity:	Reacts with the ~22-23kD Claudin-2 protein. This antibody is confirmed reactive with human, mouse, rat and canine. Reactivity is confirmed from extracts of liver and kidney tissues in all four species as well as MDCK and Caco-2 cell lysates. Reactivity with other species has not been determined.
Epitope:	C-Terminus
Reactivity:	Mouse, Human, Rat, Dog
Purification:	Protein A purified
Presentation:	PBS, pH 7.4, 0.1 % sodium azide
Recommended Storage:	Long term: -20°C; Short term: +4°C; Avoid freeze-thaw cycles.
Usage Summary:	Suitable for use in Immunofluorescence, Western Blot and Immunohistochemistry. Immunofluorescence (Rat): 1-3 ug/ml. Western Blot (Human, mouse, rat, canine): 1-3 ug/ml. Immunohistochemistry (Formalin-fixed paraffin embedded tissues): 1-2 ug/ml; Confirmed with human normal colon, spleen and thyroid, colon and breast cancer tissues. Heat induced epitope retrieval with EDTA buffer, pH 8, is required prior to staining.
Uses:	IHC - Paraffin (10 µg/ml), Immunofluorescence, Western blot (Optimal dilution to be determined by the researcher)
Size:	50 µg
Concentration:	0.5 mg/ml

Immunohistochemistry Image:



Anti-CLDN2 / Claudin 2 antibody IHC of human kidney, tubules. Immunohistochemistry of formalin-fixed, paraffin-embedded tissue after heat-induced antigen retrieval. Antibody LS-B7756 dilution 10 ug/ml.

Requested From:

Japan

Laboratory Reagent For In Vitro Research Use Only

Not for resale without prior written consent from LifeSpan BioSciences, Inc.

Created on 9/24/2014

© 2014 LifeSpan BioSciences