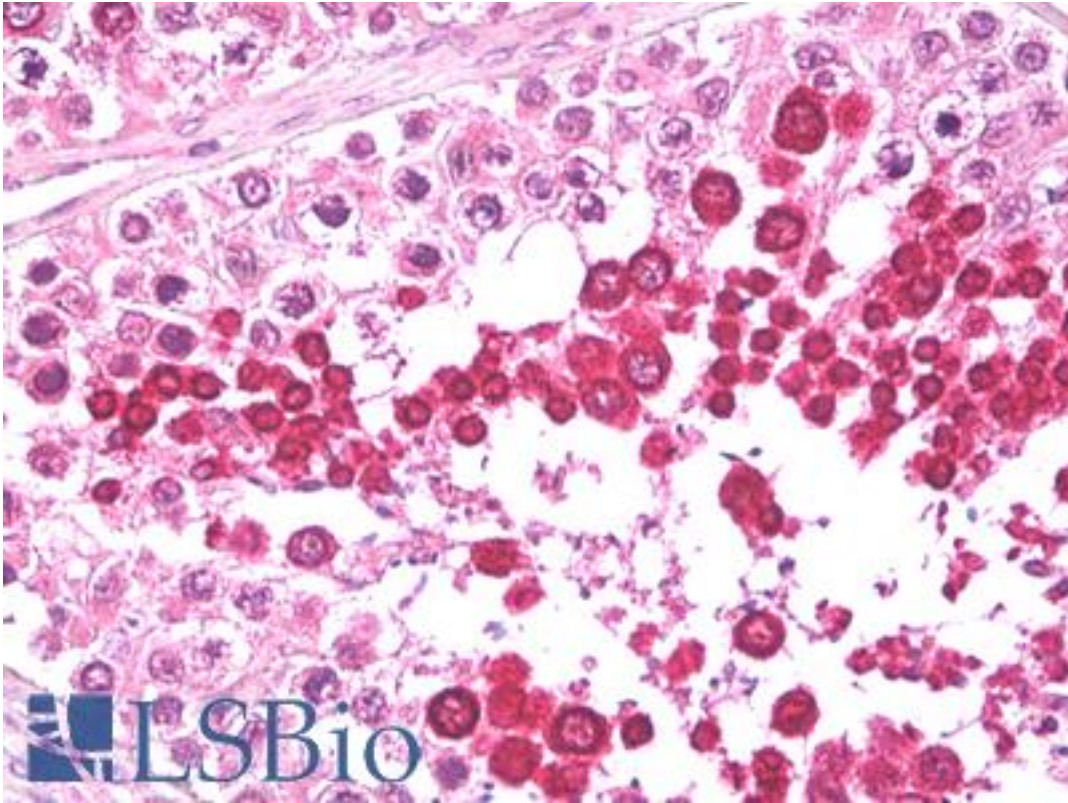


IFT57 / HIPPI Goat anti-Human Polyclonal (Internal) Antibody - LS-B7734 - LSBio

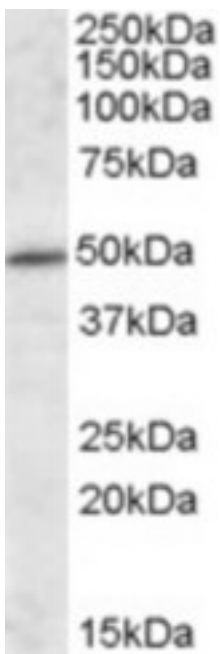
CatalogID:	LS-B7734
Validation:	This antibody replaces catalog number LS-C112832. It has been validated for use in the following assays: IHC-P.
Target:	intraflagellar transport 57 homolog (Chlamydomonas) (IFT57)
Synonyms:	IFT57 Antibody, MHS4R2 Antibody, HIP1-interacting protein Antibody, DERP8 Antibody, ESRRL1 Antibody, HIP1 protein interactor Antibody, HIPPI Antibody
Host	IFT57 antibody was produced in Goat
Clonality:	Polyclonal
Immunogen Species:	IFT57 / HIPPI antibody was raised against Human
Antigen Type:	Synthetic peptide
Immunogen:	IFT57 / HIPPI antibody was raised against synthetic peptide C-EQPQEYDDPNATISN from an internal region of human IFT57 / HIPPI (NP_060480.1). Percent identity by BLAST analysis: Human, Gorilla, Monkey, Mouse, Rat, Hamster, Elephant, Panda, Bat, Horse, Rabbit, Pig, Opossum, Sea anemone (100%); Gibbon, Dog, Bovine, Lizard, Xenopus (93%); Marmoset, Turkey, Chicken, Blood fluke, Seq squirt (87%); Platypus, Zebrafish (80%).
Specificity:	Human IFT57 / HIPPI.
Epitope:	Internal
Reactivity:	Human, Gorilla, Monkey, Mouse, Rat, Bat, Hamster, Horse, Pig, Rabbit
Predicted Reactivity:	Gibbon, Bovine, Dog, Xenopus
Purification:	Immunoaffinity purified
Presentation:	Tris-buffered saline, pH 7.3, 0.5% BSA, 0.02% sodium azide
Recommended Storage:	Short term 4°C, long term aliquot and store at -20°C, avoid freeze thaw cycles.
Usage Summary:	Peptide ELISA: antibody detection limit dilution 1:8000. Western blot: Approx 49kDa band observed in Human and Mouse Brain lysates (calculated MW of 49.1kDa according to Human NP_060480.1 and of 48.8kDa according to Mouse NP_082956.2). Recommended concentration: 1-3 ug/ml.
Uses:	IHC - Paraffin (5 µg/ml), Western blot (1 - 3 µg/ml), ELISA (1:8000) (Optimal dilution to be determined by the researcher)
Size:	50 µg
Concentration:	0.5 mg/ml

Immunohistochemistry Image:



Anti-IFT57 / HIPPI antibody IHC of human testis. Immunohistochemistry of formalin-fixed, paraffin-embedded tissue after heat-induced antigen retrieval. Antibody LS-B7734 dilution 5 ug/ml.

Western Blot Image:



IFT57 antibody (1 ug/ml) staining of Mouse Brain lysate (35 ug protein/ml in RIPA buffer). Primary incubation was 1 hour. Detected by chemiluminescence.

Requested From:	Japan
Laboratory Reagent For In Vitro Research Use Only	
Not for resale without prior written consent from LifeSpan BioSciences, Inc.	
Created on 9/24/2014	
© 2014 LifeSpan BioSciences	