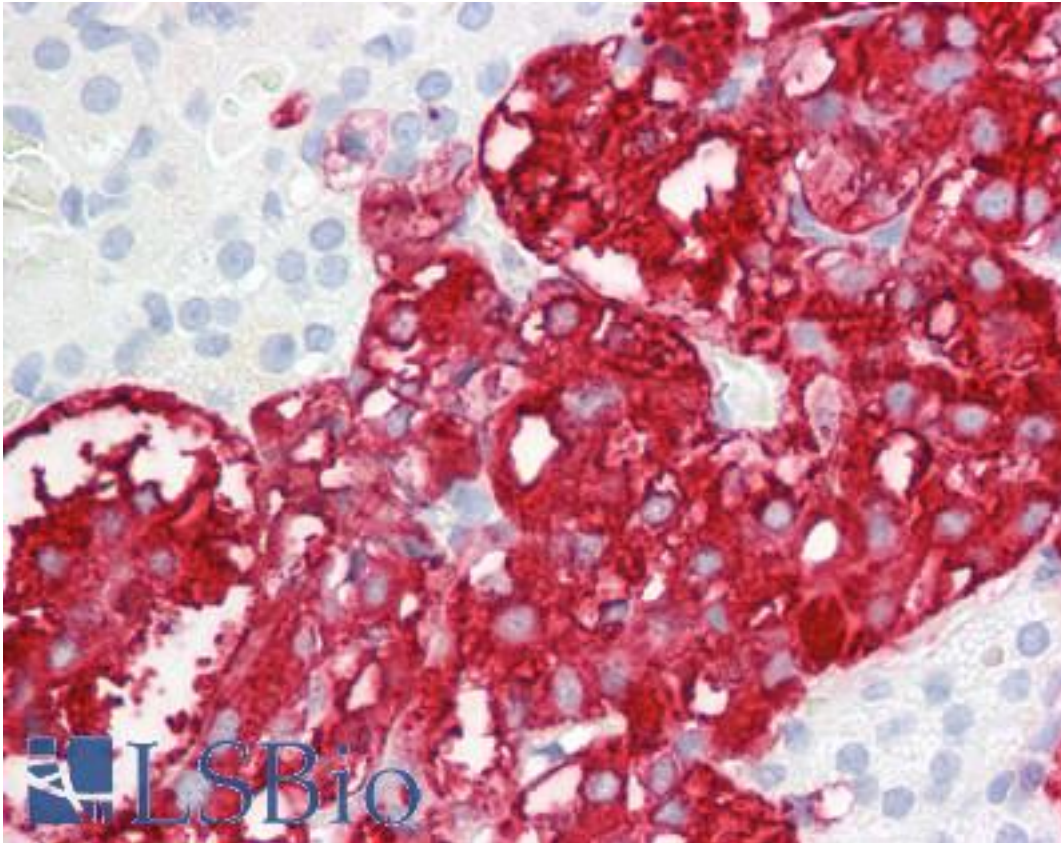


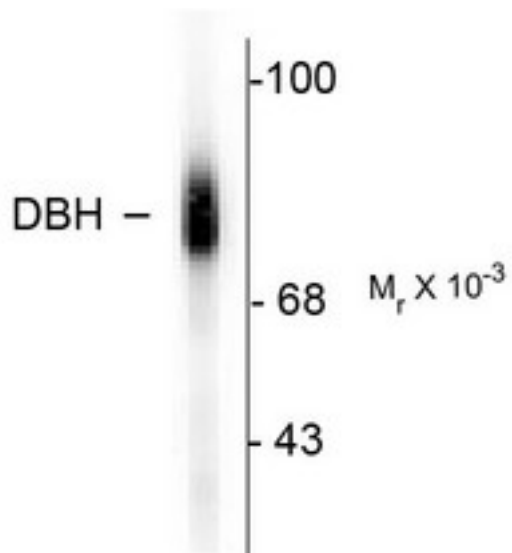
DBH/Dopamine Beta Hydroxylase Sheep anti-Human Polyclonal (C-Terminus) Antibody - LS-B7713 - LSBio	
CatalogID:	LS-B7713
Validation:	This antibody replaces catalog number LS-C184. It has been validated for use in the following assays: IHC-P.
Target:	dopamine beta-hydroxylase (dopamine beta-monoxygenase) (DBH)
Synonyms:	DBH Antibody, Dopamine beta-monoxygenase Antibody, DBM Antibody, Dopamine beta-hydroxylase Antibody
Family / Subfamily:	Monoxygenase / Not assigned-Other
Host	DBH antibody was produced in Sheep
Clonality:	Polyclonal
Immunogen Species:	DBH/Dopamine Beta Hydroxylase antibody was raised against Human
Immunogen:	DBH/Dopamine Beta Hydroxylase antibody was raised against peptide from the C-terminal region of human dopamine R-hydroxylase (DBH), conjugated to keyhole limpet hemocyanin (KLH).
Specificity:	Specific for the ~75k DBH protein in Western blots
Epitope:	C-Terminus
Reactivity:	Human, Mouse, Primate
Purification:	Immunoaffinity purified
Presentation:	10 mM HEPES (pH 7.5), 150 mM NaCl, 100 µg per ml BSA and 50% glycerol.
Recommended Storage:	Long term: -20°C; Short term: +4°C; Avoid freeze-thaw cycles.
Uses:	IHC - Paraffin (1:100), Western blot (1:1000) (Optimal dilution to be determined by the researcher)
Size:	50 µl

Immunohistochemistry Image:



Anti-DBH antibody IHC of human adrenal. Immunohistochemistry of formalin-fixed, paraffin-embedded tissue after heat-induced antigen retrieval. Antibody LS-B7713 dilution 1:100.

Western Blot Image:



Western blot of human adrenal medulla lysate showing specific immunolabeling of the ~75k DBH protein.

Requested From:

Japan

Laboratory Reagent For In Vitro Research Use Only

Not for resale without prior written consent from LifeSpan BioSciences, Inc.

Created on 9/24/2014

© 2014 LifeSpan BioSciences