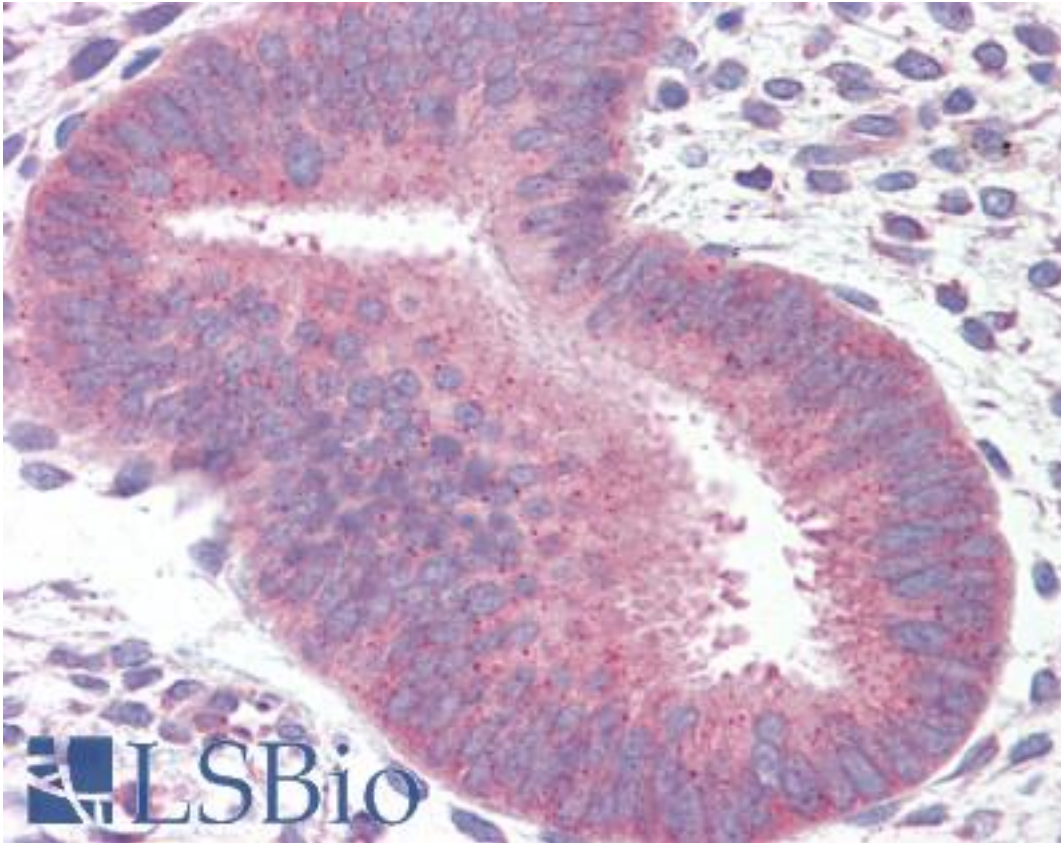


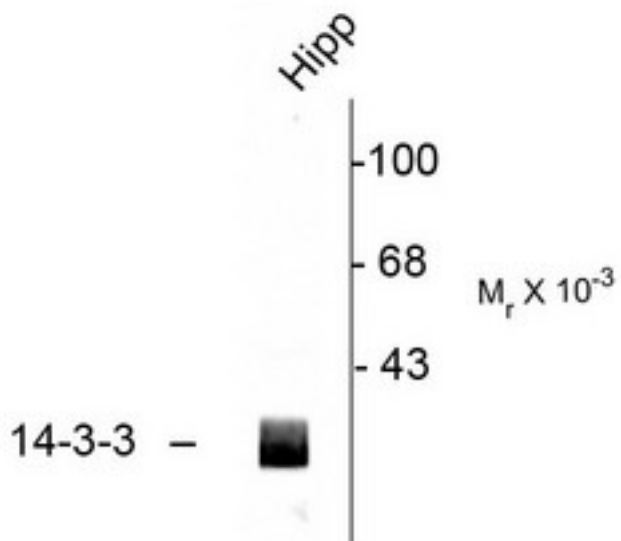
14-3-3 Rabbit anti-Rat Polyclonal (C-Terminus) Antibody - LS-B7705 - LSBio	
<b>CatalogID:</b>	LS-B7705
<b>Validation:</b>	This antibody replaces catalog number LS-C61815. It has been validated for use in the following assays: IHC-P.
<b>Target:</b>	14-3-3
<b>Host</b>	14-3-3 antibody was produced in Rabbit
<b>Clonality:</b>	Polyclonal
<b>Immunogen Species:</b>	14-3-3 antibody was raised against Rat
<b>Immunogen:</b>	14-3-3 antibody was raised against peptide corresponding to amino acid residues from the C-terminal region of 14-3-3 protein, conjugated to keyhole limpet hemocyanin (KLH).
<b>Specificity:</b>	Specific for the ~29k 14-3-3 protein. Immunolabeling of the 14-3-3 protein band is completely blocked by pre-adsorption of the antibody with the C-terminal peptide that was used to generate the antibody
<b>Epitope:</b>	C-Terminus
<b>Reactivity:</b>	Rat, Human, Mouse, Bovine, Dog, Chicken, Xenopus
<b>Purification:</b>	Immunoaffinity purified
<b>Presentation:</b>	10 mM HEPES (pH 7.5), 150 mM NaCl, 100 µg per ml BSA and 50% glycerol.
<b>Recommended Storage:</b>	Long term: -20°C; Short term: +4°C; Avoid freeze-thaw cycles.
<b>Uses:</b>	IHC - Paraffin (1:100), Western blot (1:1000) (Optimal dilution to be determined by the researcher)
<b>Size:</b>	50 µl

**Immunohistochemistry Image:**



Anti-14-3-3 antibody IHC of human uterus. Immunohistochemistry of formalin-fixed, paraffin-embedded tissue after heat-induced antigen retrieval. Antibody LS-B7705 dilution 1:100.

**Western Blot Image:**



Western blot of rat hippocampal (Hipp) lysate showing immunolabeling of the ~29k 14-3-3 protein.

Requested From:

Japan

Laboratory Reagent For In Vitro Research Use Only

Not for resale without prior written consent from LifeSpan BioSciences, Inc.

Created on 9/24/2014

© 2014 LifeSpan BioSciences