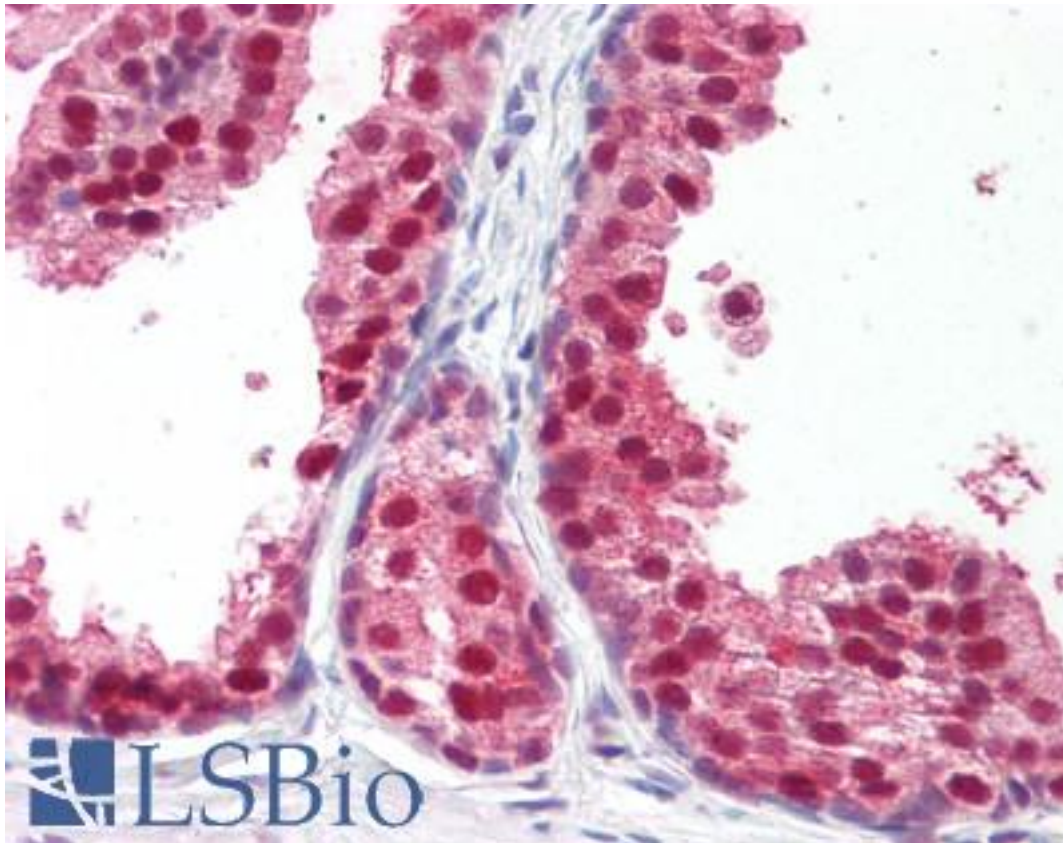


RXRβ Mouse anti-Human Monoclonal (Hinge Peptide) Antibody - LS-B7704 - LSBio

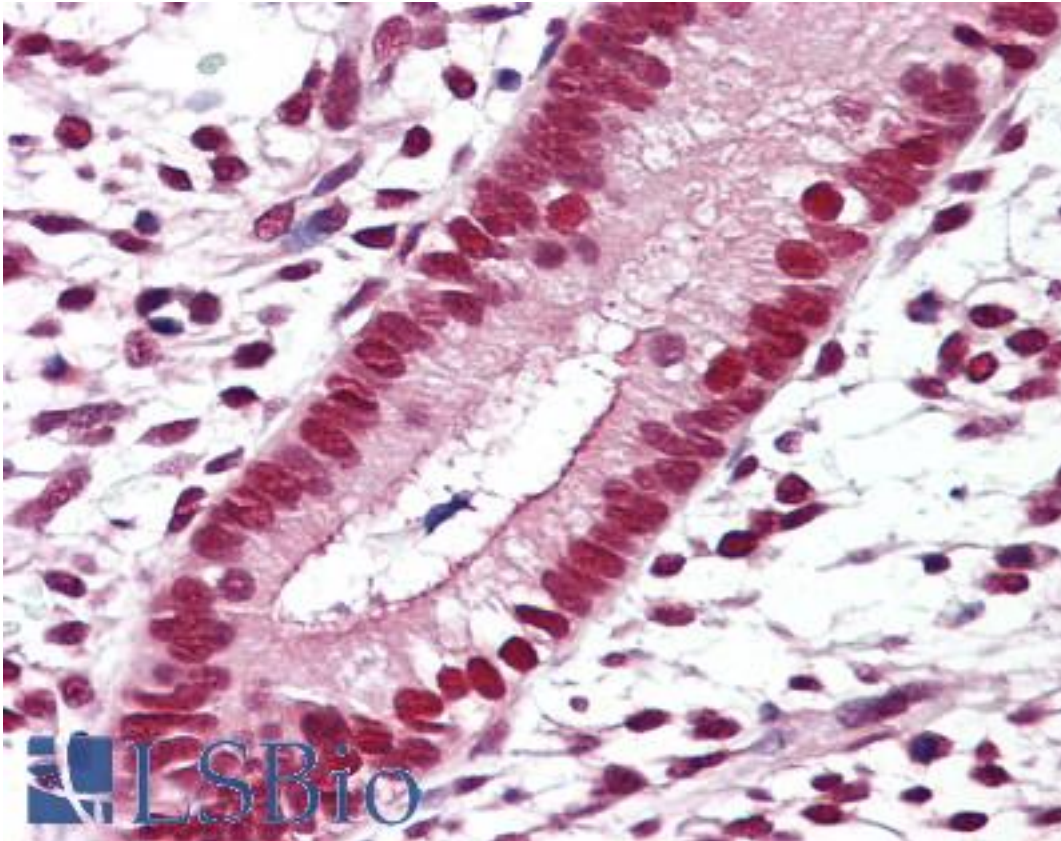
CatalogID:	LS-B7704
Validation:	This antibody replaces catalog number LS-C61812. It has been validated for use in the following assays: IHC-P.
Target:	retinoid X receptor, beta (RXRβ)
Synonyms:	RXRβ Antibody, DAUDI6 Antibody, H-2RIIBP Antibody, Retinoid X receptor beta Antibody, Retinoid X receptor, beta Antibody, NR2B2 Antibody, RCoR-1 Antibody, RXR-beta Antibody
Family / Subfamily:	NHR / NR2 Hepatocyte NF4-like
Host	RXRβ antibody was produced in Mouse
Clonality:	Monoclonal
Isotype:	IgG1
Immunogen Species:	RXRβ antibody was raised against Human
Immunogen:	RXRβ antibody was raised against hinge peptide corresponding to amino acids from human, mouse and rat retinoid X receptor, beta-isotype.
Specificity:	Specific for the ~48k RXR-0 protein
Epitope:	Hinge Peptide
Reactivity:	Human, Mouse, Rat
Purification:	Protein G purified
Presentation:	10 mM HEPES (pH 7.5), 150 mM NaCl, 100 µg per ml BSA and 50% glycerol.
Recommended Storage:	Long term: -20°C; Short term: +4°C; Avoid freeze-thaw cycles.
Uses:	IHC - Paraffin (1:50), Western blot (1:1000) (Optimal dilution to be determined by the researcher)
Size:	50 µl

Immunohistochemistry Image:



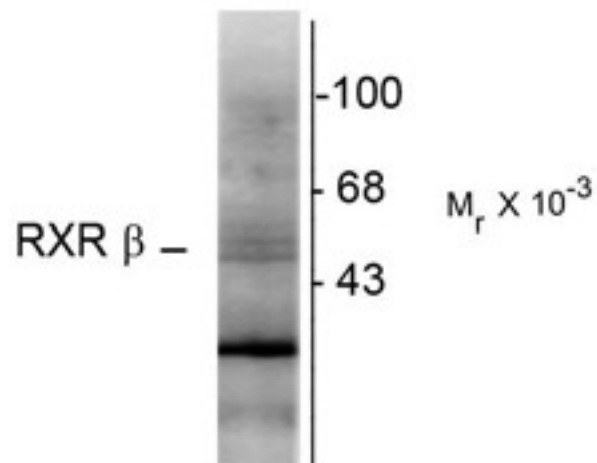
Anti-RXR β antibody IHC of human prostate. Immunohistochemistry of formalin-fixed, paraffin-embedded tissue after heat-induced antigen retrieval. Antibody LS-B7704 dilution 1:50.

Immunohistochemistry Image:



Anti-RXR β antibody IHC of human uterus. Immunohistochemistry of formalin-fixed, paraffin-embedded tissue after heat-induced antigen retrieval. Antibody LS-B7704 dilution 1:50.

Western Blot Image:



Western blot of rat hippocampal lysate showing specific immunolabeling of the ~48k RXR-0 protein.

Requested From:

Japan

Laboratory Reagent For In Vitro Research Use Only

Not for resale without prior written consent from LifeSpan BioSciences, Inc.

Created on 9/24/2014

© 2014 LifeSpan BioSciences