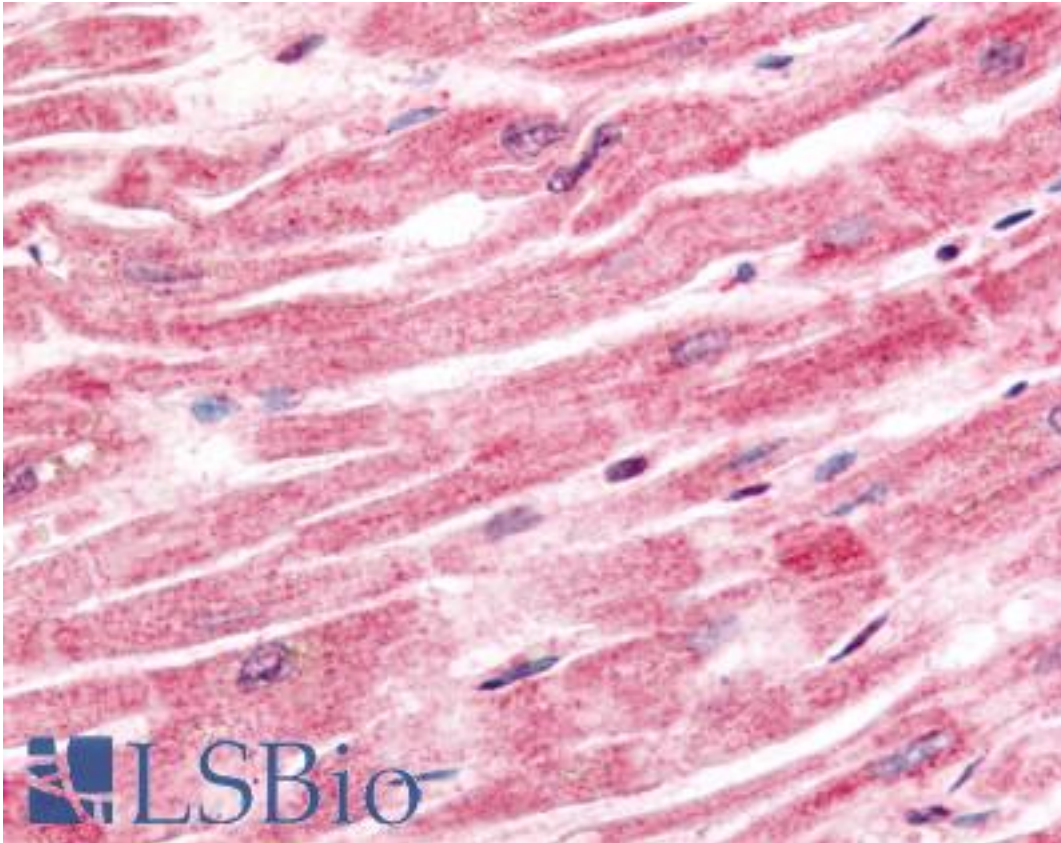


Sprouty 4 / SPRY4 Rabbit anti-Human Polyclonal (aa306-322) Antibody - LS-B77 - LSBio

CatalogID:	LS-B77
Validation:	This antibody replaces catalog number LS-C19051. It has been validated for use in the following assays: IHC.
Target:	sprouty homolog 4 (Drosophila) (SPRY4)
Synonyms:	SPRY4 Antibody, Protein sprouty homolog 4 Antibody, Sprouty 4 Antibody, Sprouty homolog 4 (Drosophila) Antibody, Sprouty 4 Antibody, Stry-4 Antibody
Host	SPRY4 antibody was produced in Rabbit
Clonality:	Polyclonal
Immunogen Species:	Sprouty 4 / SPRY4 antibody was raised against Human
Antigen Type:	Synthetic peptide
Immunogen:	Sprouty 4 / SPRY4 antibody was raised against synthetic peptide from human SPRY4.
Specificity:	Amino acids 306-322 of Human Sprouty-4 protein.
Epitope:	aa306-322
Reactivity:	Human, Chimpanzee
Purification:	Immunoaffinity purified
Presentation:	0.02 M potassium phosphate, 0.15 M sodium chloride, pH 7.2, 0.01% sodium azide.
Recommended Storage:	+4°C or -20°C, Avoid repeated freezing and thawing.
Usage Summary:	Immunohistochemistry: LS-B77 was validated for use in immunohistochemistry on a panel of 21 formalin-fixed, paraffin-embedded (FFPE) human tissues after heat induced antigen retrieval in pH 6.0 citrate buffer. After incubation with the primary antibody, slides were incubated with biotinylated secondary antibody, followed by alkaline phosphatase-streptavidin and chromogen. The stained slides were evaluated by a pathologist to confirm staining specificity. The optimal working concentration for LS-B77 was determined to be 2.5 ug/ml.
Uses:	IHC - Paraffin (2.5 µg/ml), Western blot (1:100 - 1:1000), ELISA (1:3000 - 1:12000) (Optimal dilution to be determined by the researcher)
Size:	50 µg
Concentration:	1 mg/ml

Immunohistochemistry Image:



Anti-SPRY4 antibody IHC of human heart. Immunohistochemistry of formalin-fixed, paraffin-embedded tissue after heat-induced antigen retrieval. Antibody LS-B77 concentration 5 ug/ml.

Western Blot Image:



Anti-Sprouty-4 Antibody - Western Blot. Western blot of Affinity Purified anti-Sprouty-4 antibody shows detection of a doublet band ~35 kD corresponding to human Sprouty-4. Approximately 30 ug of HeLa (lane 1), SW13 (lane 2) and C2C12 (Lane 3) whole cell lysates were separated by 10% SDS-PAGE and transferred onto nitrocellulose. After blocking with 5% non-fat dry milk in TBST the membrane was probed with the primary antibody diluted to 1:100 overnight at 4C followed by washes and reaction with a 1:5000 dilution of HRP conjugated Gt-a-Rabbit IgG [H&L] MX (LS-C60865) for 1 h at room temperature. Signal was probed with ECL (Pierce). Other detection systems will yield similar results.

Requested From:	Japan
Laboratory Reagent For In Vitro Research Use Only	
Not for resale without prior written consent from LifeSpan BioSciences, Inc.	
Created on 9/24/2014	
© 2014 LifeSpan BioSciences	