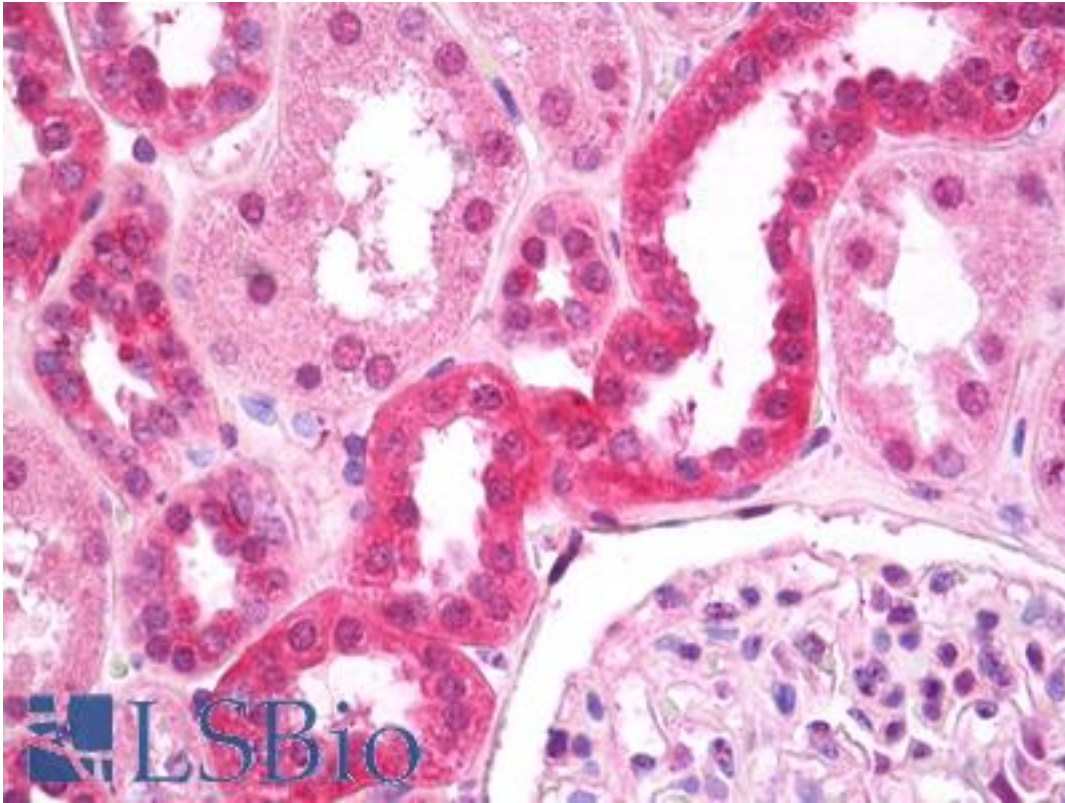


CASR/Calcium Sensing Receptor Mouse anti-Human Monoclonal (aa214-235) (ADD) Antibody - LS-B7687 - LSBio	
CatalogID:	LS-B7687
Validation:	This antibody replaces catalog number LS-C77550. It has been validated for use in the following assays: IHC-P.
Target:	calcium-sensing receptor (CASR)
Synonyms:	CASR Antibody, Ca sensing receptor Antibody, Ca ²⁺ sensing receptor Antibody, Calcium-sensing receptor Antibody, FIH Antibody, EIG8 Antibody, GPRC2A Antibody, HHC Antibody, HHC1 Antibody, Hypocalciuric hypercalcemia 1 Antibody, PCAR1 Antibody, NSHPT Antibody, CAR Antibody, FHH Antibody
Family / Subfamily:	GPCR / Calcium-sensing
Host	CASR antibody was produced in Mouse
Clonality:	Monoclonal
Isotype:	IgG2a
Clone Name:	ADD
Immunogen Species:	CASR/Calcium Sensing Receptor antibody was raised against Human
Antigen Type:	Synthetic peptide
Immunogen:	CASR/Calcium Sensing Receptor antibody was raised against synthetic peptide: ADDDYGRPGIEKFREEAEERDI, corresponding to amino acids 214-235 of Human Calcium Sensing Receptor. Percent identity by BLAST analysis: Human, Gorilla, Gibbon, Monkey, Marmoset, Mouse, Rat, Hamster, Elephant, Panda, Dog, Bat, Bovine, Horse, Rabbit, Pig, Opossum, Turkey, Chicken, Platypus (100%); Xenopus (95%); Stickleback, Pufferfish (86%).
Specificity:	Species cross-reactivity: Cross-reacts with Human, Rat and bovine.
Epitope:	aa214-235
Reactivity:	Human, Gorilla, Gibbon, Monkey, Mouse, Rat, Bat, Bovine, Dog, Hamster, Horse, Pig, Rabbit, Chicken
Predicted Reactivity:	Xenopus
Purification:	Immunoaffinity purified
Presentation:	PBS, 1 mg/ml BSA, 0.05% sodium azide.
Recommended Storage:	Short term 4°C, long term aliquot and store at -20°C, avoid freeze thaw cycles. Store undiluted.
Usage Summary:	Suitable for use in Western Blot and Immunohistochemistry.
Uses:	IHC - Paraffin (5 µg/ml), IHC - Frozen (2 µg/ml), Western blot (Optimal dilution to be determined by the researcher)
Size:	50 µg
Concentration:	1 mg/ml

Immunohistochemistry Image:



Anti-FIH / CASR antibody IHC of human kidney, tubules. Immunohistochemistry of formalin-fixed, paraffin-embedded tissue after heat-induced antigen retrieval. Antibody LS-B7687 dilution 5 ug/ml.

Requested From:

Japan

Laboratory Reagent For In Vitro Research Use Only

Not for resale without prior written consent from LifeSpan BioSciences, Inc.

Created on 9/24/2014

© 2014 LifeSpan BioSciences