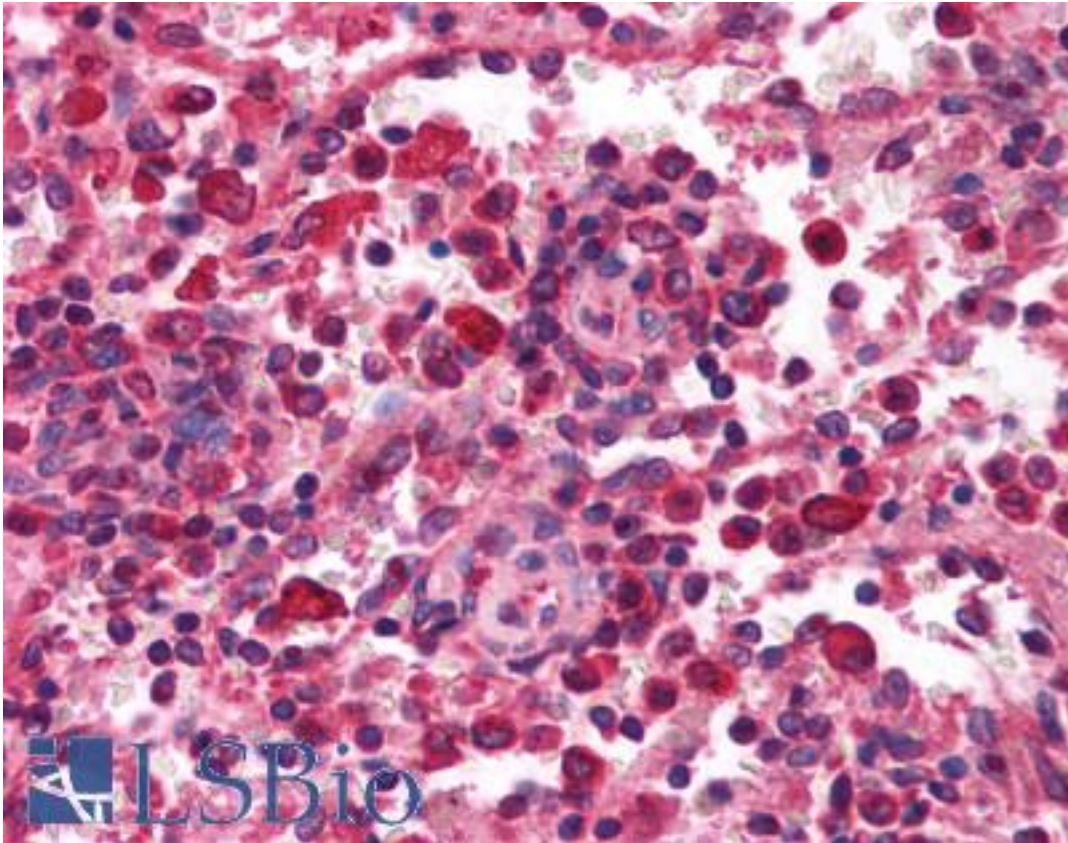


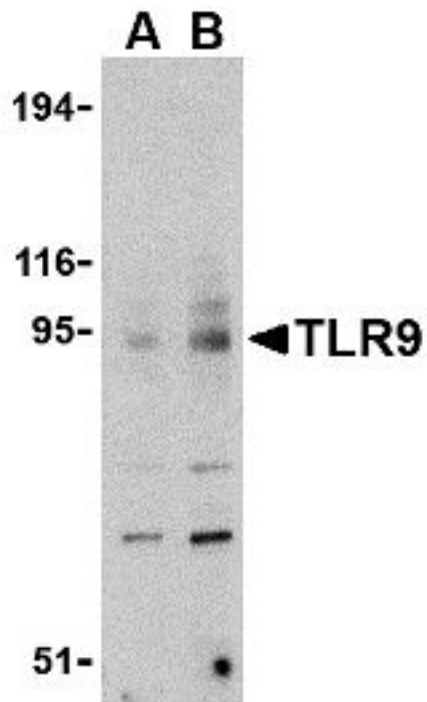
| TLR9 Rabbit anti-Human Polyclonal (C-Terminus) Antibody - LS-B756 - LSBio | |
|---|--|
| CatalogID: | LS-B756 |
| Validation: | This antibody replaces catalog number LS-C26899. It has been validated for use in the following assays: IHC. |
| Target: | toll-like receptor 9 (TLR9) |
| Synonyms: | TLR9 Antibody, CD289 Antibody, CD289 antigen Antibody, Scri2a Antibody, Toll-like receptor 9 Antibody |
| Family / Subfamily: | Toll-like Receptor / not assigned-Toll-like Receptor |
| Host | TLR9 antibody was produced in Rabbit |
| Clonality: | Polyclonal |
| Immunogen Species: | TLR9 antibody was raised against Human |
| Antigen Type: | Synthetic peptide |
| Immunogen: | TLR9 antibody was raised against synthetic peptide from human TLR9. |
| Specificity: | 16 amino acids near the C-terminus of human TLR9 |
| Epitope: | C-Terminus |
| Reactivity: | Human, Mouse |
| Purification: | Purified |
| Presentation: | PBS, 0.02% sodium azide. |
| Recommended Storage: | For long term, store at -20°C. Avoid repeat freeze-thaw cycles. |
| Usage Summary: | Immunohistochemistry: LS-B756 was validated for use in immunohistochemistry on a panel of 21 formalin-fixed, paraffin-embedded (FFPE) human tissues after heat induced antigen retrieval in pH 6.0 citrate buffer. After incubation with the primary antibody, slides were incubated with biotinylated secondary antibody, followed by alkaline phosphatase-streptavidin and chromogen. The stained slides were evaluated by a pathologist to confirm staining specificity. The optimal working concentration for LS-B756 was determined to be 10 ug/ml. |
| Uses: | IHC - Paraffin (10 µg/ml), Western blot (Optimal dilution to be determined by the researcher) |
| Size: | 50 µg |
| Concentration: | 1 mg/ml |

Immunohistochemistry Image:



Anti-TLR9 antibody IHC of human spleen. Immunohistochemistry of formalin-fixed, paraffin-embedded tissue after heat-induced antigen retrieval. Antibody LS-B756 concentration 10 ug/ml.

Western Blot Image:



Western blot of TLR9 antibody LS-B756 in mouse spleen cell lysate with TLR9 antibody at (A) 0.5 (B) 1 ug/ml

Requested From:

Japan

Laboratory Reagent For In Vitro Research Use Only

Not for resale without prior written consent from LifeSpan BioSciences, Inc.

Created on 9/24/2014

© 2014 LifeSpan BioSciences