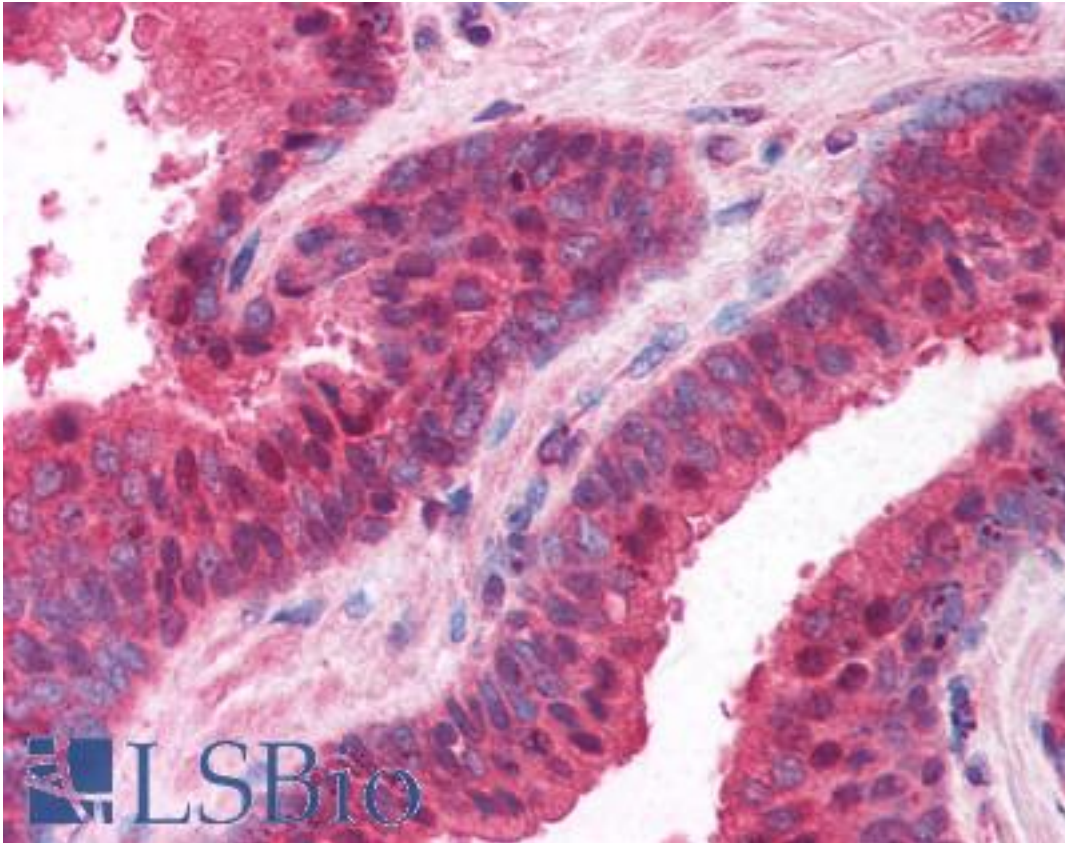


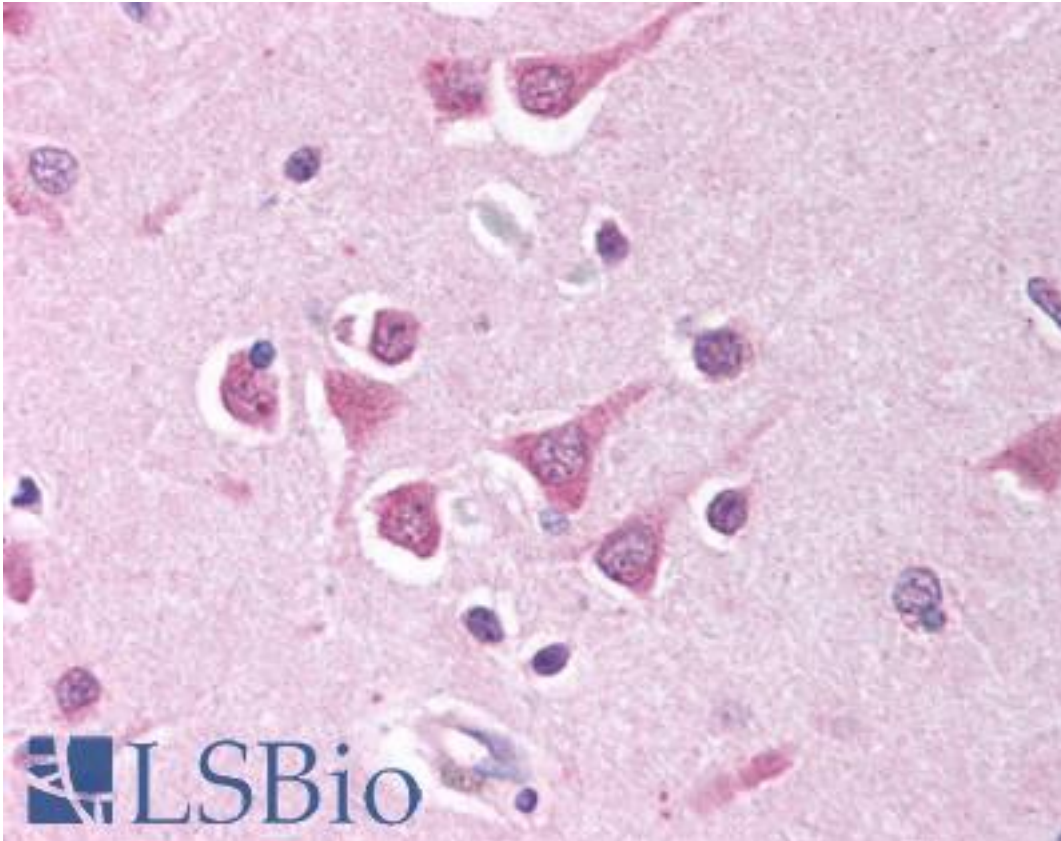
PPP4C Rabbit anti-Bovine Polyclonal (aa294-307) Antibody - LS-B752 - LSBio	
<b>CatalogID:</b>	LS-B752
<b>Validation:</b>	This antibody replaces catalog number LS-C26549. It has been validated for use in the following assays: IHC.
<b>Target:</b>	protein phosphatase 4, catalytic subunit (PPP4C)
<b>Synonyms:</b>	PPP4C Antibody, PP4 Antibody, PPH3 Antibody, Protein phosphatase X Antibody, PP-X Antibody, Protein phosphatase 4 Antibody, PP4C Antibody, PPP4 Antibody, PPX Antibody
<b>Family / Subfamily:</b>	Protein Phosphatase / Protein Phosphatase - Serine/Threonine other
<b>Host</b>	PPP4C antibody was produced in Rabbit
<b>Clonality:</b>	Polyclonal
<b>Immunogen Species:</b>	PPP4C antibody was raised against Bovine
<b>Immunogen:</b>	PPP4C antibody was raised against the immunogen used to the purified PP X/C peptide conjugated to KLH corresponding to the sequence aa 294-307.
<b>Specificity:</b>	Amino acids 294 to 307 of PPP4C
<b>Epitope:</b>	aa294-307
<b>Reactivity:</b>	Bovine, Human, Mouse, Rat
<b>Purification:</b>	Purified
<b>Presentation:</b>	PBS, 0.08% sodium azide.
<b>Recommended Storage:</b>	+4°C or -20°C, Avoid repeated freezing and thawing.
<b>Usage Summary:</b>	Immunohistochemistry: LS-B752 was validated for use in immunohistochemistry on a panel of 21 formalin-fixed, paraffin-embedded (FFPE) human tissues after heat induced antigen retrieval in pH 6.0 citrate buffer. After incubation with the primary antibody, slides were incubated with biotinylated secondary antibody, followed by alkaline phosphatase-streptavidin and chromogen. The stained slides were evaluated by a pathologist to confirm staining specificity. The optimal working concentration for LS-B752 was determined to be 10 ug/ml.
<b>Uses:</b>	IHC - Paraffin (10 µg/ml), Western blot (Optimal dilution to be determined by the researcher)
<b>Size:</b>	50 µg
<b>Concentration:</b>	1 mg/ml

**Immunohistochemistry Image:**



Anti-PPP4C antibody IHC of human prostate. Immunohistochemistry of formalin-fixed, paraffin-embedded tissue after heat-induced antigen retrieval. Antibody LS-B752 concentration 10 ug/ml.

**Immunohistochemistry Image:**



Anti-PPP4C antibody IHC of human brain, cortex. Immunohistochemistry of formalin-fixed, paraffin-embedded tissue after heat-induced antigen retrieval. Antibody LS-B752 concentration 10 ug/ml.

**Requested From:**

Japan

Laboratory Reagent For In Vitro Research Use Only

Not for resale without prior written consent from LifeSpan BioSciences, Inc.

Created on 9/24/2014

© 2014 LifeSpan BioSciences